



 **GREE**
Air comfort for all



Heating
& Cooling

Maximum
Performance

Ultra
Capabilities



HEATING &
COOLING

SUPERIOR COMFORT FOR THE GLOBAL MARKETPLACE



THE TECHNOLOGY of air conditioning is only part of our daily focus. We are committed to continually advancing the performance of our products, with a never-satisfied approach to R&D. We're also passionate about delivering superior customer service, unparalleled global leadership and planet-wide environmental stewardship. That's the GREE formula for success, and it's one that brings true comfort to the world.

TABLE OF CONTENTS

- About GREE 2 ■
- What Is Ductless? 4 ■
- GREE Superior Technology 6 ■
- Product Line Up 8 ■
- Save Energy With GREE 10 □
- Single-Zone Applications & Benefits 12 ■
- Single-Zone System 14 ■
- FLEXX 30 ■
- Single-Zone Quick Reference Guide 32 ■
- Get Smart With GREE 34 □
- Multi-Zone Applications & Benefits 36 ■
- Multi-Zone System 38 ■
- Controls & Accessories 48 ■
- Multi-Zone Quick Reference Guide 50 ■
- Multi-Zone Compatibility Chart 52 ■
- MULTI PRO 54 ■
- ETAC 64 ■
- TTW 66 ■
- GREE Select Dealer Program 68 ■
- Terms & Conditions 70 ■

WHAT IS DUCTLESS?



Ductless Mini-Splits operate via an indoor air handler & an outdoor compressor unit with utmost efficiency and climate control.

Ideal for **ANY SIZE ROOM**
 —
MORE AFFORDABLE
 than replacing a central system
 —
 Great for **SUPPLEMENTING**
 a central system

BETTER THAN A WINDOW AC...

- Enjoy your indoor space without noisy AC distractions – 19 dB(A) as compared to 52 dB(A) with a typical 12K window unit
- Sleek look to blend with your decor blends seamlessly into any room setting and doesn't block your natural light
- Prevents intruders, pests and dust from entering your home – no window is compromised

AS **QUIET** AS A WHISPER,
 WITH **POWER** AND **EFFICIENCY**.

ENJOY THE DUCT-FREE ADVANTAGE

- Precisely heats & cools only desired (occupied) spaces
- Maintains a constant temperature – no wild swings or noisy HVAC starts & stops
- Delivers up to 50% energy savings (up to 38 SEER) compared to conventional ducted systems – check for rebates
- Simplifies maintenance of filters to maintain optimal air quality
- Acts as a personalized thermostat through remote control/WIFI capabilities
- Avoids 30% heating & cooling loss from air passing through ductwork
- Easy install, no mess in home - licensed contractor installation required for Warranty Coverage

FASTER HEATING/COOLING

PRECISE CONTROL

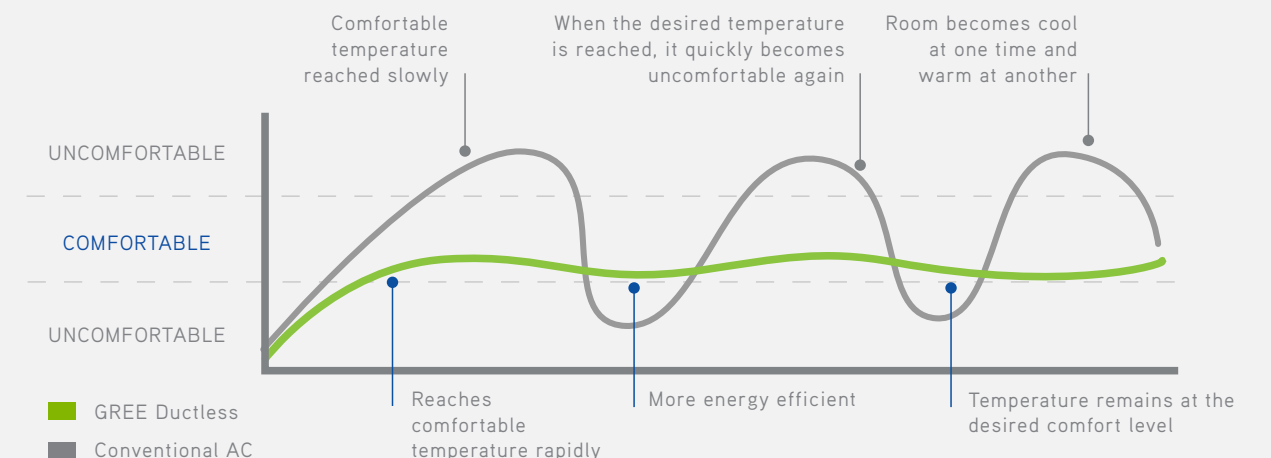
ENERGY SAVINGS

ECO-FRIENDLY REFRIGERANT

WHERE TO INSTALL

- Houses & rooms that require cooling, heat or both
- Sun & Season rooms
- Open-wall remodels
- Historical structures
- Vacation rentals
- Bonus space - garages, basements, attics, sheds
- Commercial spaces – offices, restaurants, classrooms, hotel/motel, dorms, etc.
- Supplement to inefficient/insufficient systems to maintain desired comfort level

INVERTER TECHNOLOGY DELIVERS OPTIMAL, STEADY COMFORT



GREE TECHNOLOGY: EFFICIENCY FEATURES FOR **MAXIMUM** PERFORMANCE



**GREE'S LOAD MATCH VARIABLE
SPEED COMPRESSOR**

VS.



**TRADITIONAL SINGLE
SPEED COMPRESSOR**

CONTROLS

- Cutting-edge micro-circuit for precise inverter control



REFRIGERATION

- Stable, reliable compressor
- Larger heat exchanger with optimized piping
- Electronic expansion valve (EEV) for precise refrigerant flow

AIRFLOW

- Enlarged air intake and outlet
- Optimized crossflow fan design with larger air volume to enhance heat exchange efficiency
- Optimized axial fan design with larger diameter for greater volume and higher efficiency control

AUTO-CLEAN FUNCTION

- Easy removal of dirt and odors through proprietary cleansing process of evaporator
- Units performs 4-stage process to remove unwanted particles from coil: condenses, frosts, sterilizes and defrosts



- LOW FREQUENCY TORQUE CONTROL
- HIGH-SPEED MICROPROCESSORS
- AUTOMATIC VOLTAGE ADAPTION
- HIGH RELIABILITY
- ECO-FRIENDLY R410A REFRIGERANT

KEY FACTORS FOR **HIGH** EFFICIENCY

INTEGRATED EVAPORATOR

Compact design minimizes indoor unit size while greatly enhancing coil performance.

INTEGRATED DESIGN

Integrated rear chassis and water tray avoids water leakage & reduces noise.

DUAL SIDE INSTALLATION

Choose left or right piping outlet for easier installation.

LOW VOLTAGE START UP

Unit can operate from 187V to 253V, adapting to unstable power supply while providing better PCB protection.

AUTO RESTART

After power outage, unit automatically recovers to previous settings.

RELIABILITY IS IN THE DESIGN

QUIET, HIGH-EFFICIENCY FAN

Tri-Blade axial fan is resistant to high temperatures and operates quietly.

DURABLE STEEL FINISH

Outdoor unit cabinets are built with heavy gauge rolled steel and coated with weather-resistant paint to withstand harsh conditions all year round.

SELF-DIAGNOSIS

Automatic system diagnostics continuously scans for errors or malfunctions. Fault codes are shown on the unit display to facilitate troubleshooting and repair.

COIL PROTECTION

Acrylic resin coil coating maintains excellent heat transfer, resists corrosive elements and provides years of reliable service.

HIGH TEMP RESISTANCE CIRCUIT BOARDS

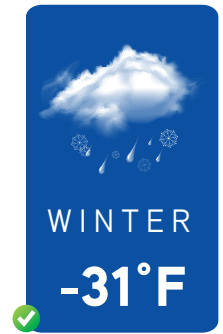
Reliable printed circuit boards (PCB) operate in temperatures up to 185°F while protected by a fire-proof metal casing.

SELF-DRAINING BASE PAN

Condensate water drains freely to help prevent freezing in base pan.

Note: Not all GREE products have each one of these features. Consult individual product guides for specific features and functions.

ULTRA CAPABILITIES FOR **EXTREME** CONDITIONS

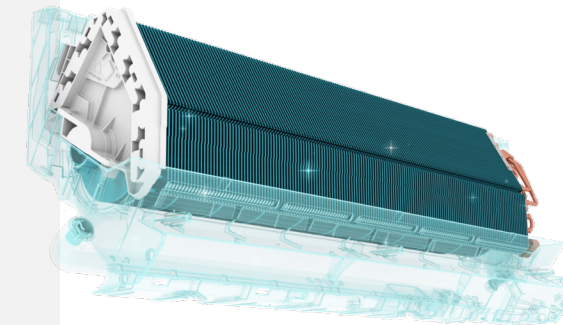


Available in Single & Multi-Zone systems.

COOLING RANGE: 0°F - 129°F

HEATING RANGE: -31°F - 75°F

THE **PROOF** IS IN THE **COMFORT...**



LOW NOISE

Noise lower than typical library sound levels for the ultimate in quiet unobtrusiveness.

INTELLIGENT DEFROSTING

While traditional defrosting activates for a set time period (for example, 10 minutes every hour), GREE's Intelligent Defrost only operates when needed: getting the job done efficiently without wasting energy.

TURBO COOLING

Press "Turbo" button on remote controller to maximize air flow and reach desired temperature in the shortest possible time.

4-WAY AIR FLOW

Louvers can be vertically or horizontally adjusted to direct airflow towards anywhere in the room to maximize room comfort.

I-FEEL

Senses temperature at the remote controller instead of at the indoor unit. Adjusts airflow & temperature accordingly for personal comfort and energy savings.

PRODUCT LINEUP

SINGLE-ZONE SYSTEMS										
Btu/h	9,000	12,000	9,000	12,000	18,000	24,000	30,000	36,000	Outdoor Unit	
	LIVV09HP115V1AH	LIVV12HP115V1AH	LIVV12HP230V1AH	LIVV12HP230V1AH	LIVV18HP230V1AH	LIVV24HP230V1AH	LIVV30HP230V1AH	LIVV36HP230V1AH		
	115V		230V							
	3VIR09HP115V1AH	3VIR12HP115V1AH	9k, 12k 18k, 24k	12k, 18k, 24k	9k, 12k 18k, 24k	9k, 12k 18k, 24k	<p>Vireo GEN3 systems also work with the cassettes, slim ducts, and floor/ceiling units located in the Multi-Zone section below.</p>			

ULTRA PRODUCTS FOR EXTREME CONDITIONS & HIGH EFFICIENCY										
Btu/h	9,000	12,000	18,000	24,000	Outdoor Unit	Vireo+ ULTRA		30,000	36,000	Outdoor Unit
	SAP09HP230V1AH	SAP12HP230V1AH	SAP18HP230V1AH	SAP24HP230V1AH				VIRU30HP230V1AH	VIRU36HP230V1AH	

LIGHT COMMERCIAL APPLICATIONS										
Btu/h			18,000	24,000	30,000	36,000	Outdoor Unit	42,000	48,000	Outdoor Unit
	CEILING CASSETTE UNIVERSAL FLOOR / CEILING SLIM DUCT (Medium Static)	*DECORATIVE GRILLE SOLD SEPARATELY	UMAT18HP230V1AC	UMAT24HP230V1AC	UMAT30HP230V1AC	UMAT36HP230V1AC		UMAT42HP230V1AC	UMAT48HP230V1AC	
			UMAT18HP230V1AF	UMAT24HP230V1AF	UMAT30HP230V1AF	UMAT36HP230V1AF		UMAT42HP230V1AF	UMAT48HP230V1AF	
			UMAT18HP230V1AD	UMAT24HP230V1AD	UMAT30HP230V1AD	UMAT36HP230V1AD		UMAT42HP230V1AD	UMAT48HP230V1AD	

INDOOR UNITS FOR MULTI-ZONE AND SINGLE-ZONE VIREO GEN3*				
Btu/h	9,000	12,000	18,000	24,000
	LIVV09HP230V1AH	LIVV12HP230V1AH	LIVV18HP230V1AH	LIVV24HP230V1AH
	3VIR09HP230V1AH	3VIR12HP230V1AH	3VIR18HP230V1AH	3VIR24HP230V1AH
	SAP09HP230V1AH	SAP12HP230V1AH	SAP18HP230V1AH	SAP24HP230V1AH
		CAS12HP230V1BC	CAS18HP230V1BC	CAS24HP230V1BC
	DUCT09HP230V1BD	DUCT12HP230V1BD	DUCT18HP230V1BD	DUCT24HP230V1BD
	FLR09HP230V1BF	FLR12HP230V1BF	FLR18HP230V1BF	FLR24HP230V1BF
	CONS09HP230V1AF	CONS12HP230V1AF	CONS18HP230V1AF	

MULTI-ZONE SYSTEMS OUTDOOR UNITS					
Btu/h	18,000	24,000	30,000	36,000	42,000
	MULTI18HP230V1CO	MULTI24HP230V1CO	MULTI30HP230V1CO	MULTI36HP230V1CO	MULTI42HP230V1CO
		MULTIU18HP230V1DO	MULTIU24HP230V1DO	MULTIU36HP230V1DO	MULTIU42HP230V1DO
	GMV-24WL/C-T(U)	GMV-28WL/C-T(U)	GMV-36WL/C-T(U)	GMV-48WL/C-T(U)	GMV-60WL/C-T(U)
9 INDOOR UNITS TO CHOOSE <ul style="list-style-type: none"> • Wall Mount • Multi-Position Air Handler • Horizontal Slim Ducted • 360 Compact Ceiling Cassette 				36,000	68,000
				GMV-36WL/B-T(U)	GMV-68WL/B-T(U)

*Compatible with VIREO GEN3.

*Actual product appearance may vary from images shown.



**Save Energy.
Get a GREE.**

HEAT PUMP SYSTEMS

Heat pumps are the optimal solution for **cooling and heating** your home. Unlike traditional furnaces that create heat from burning oil or gas, heat pumps use the refrigeration cycle to transfer thermal energy.

WHAT DOES THIS MEAN FOR YOU?

- ✓ Consume up to 50% less energy
- ✓ Reduce load on electric grid
- ✓ Support shift from fossil fuels to renewable energy sources
- ✓ Lower greenhouse gas emissions

SINGLE-ZONE APPLICATIONS & BENEFITS



Solve those too-hot/too-cold “problem areas”



Gain that extra living space in your home...



Add that guest cottage or getaway place in your backyard or above the garage...



HEATING AND COOLING YOU CAN COUNT ON

115V & 230V MODELS



QUIET, EFFICIENT AND OH-SO-SOPHISTICATED.

Slim, stylish and elegant, the latest Livo GEN3 units are designed to be energy efficient at an affordable price. These 16-19 SEER heat pump systems are built around GREE's variable speed compressor technology, using eco-friendly R410A refrigerant.

- HIGH EFFICIENCY, UP TO 19 SEER / 10 HSPF
- SLEEK LOOK TO BLEND WITH YOUR DECOR
- PRECISE AIRFLOW CONTROL
- BUILT-IN WIFI

- G10 inverter technology
- I-Feel function
- Multiple fan speeds
- Sleep function
- Acrylic resin coil coating
- Dehumidification
- Intelligent preheating
- Automatic voltage adaption
- Low voltage start-up
- Self-diagnosis
- Swing louver control
- LED display settings
- Privacy lock mode
- Cooling range: -4°F - 115°F
- Heating range: -13°F - 75°F
- Auto-Clean function

LIVO GEN3	LIVV09HP115V1A	LIVV12HP115V1A	LIVV09HP230V1A	LIVV12HP230V1A	LIVV18HP230V1A	LIVV24HP230V1A	LIVV30HP230V1A	LIVV36HP230V1A	
System Type									
HEAT PUMP									
SYSTEM PERFORMANCE									
Cooling Capacity (Min-Max)	Btu/h	9000 (2764 - 9724)	12000 (3753 - 12500)	9100 (2457 - 9600)	12000 (1024 - 12624)	17400 (4094 - 20000)	22000 (5900 - 25200)	30000 (4100 - 33100)	33600 (5951 - 36000)
Heating Capacity (Min-Max)	Btu/h	9500 (2081 - 12283)	13000 (3412 - 15013)	9500 (2457 - 11500)	13000 (2388 - 13648)	18000 (4100 - 21000)	24000 (4500 - 25900)	30000 (7848 - 36000)	34600 (8530 - 37020)
SEER / EER		18 / 10	18 / 10	17 / 10.25	17 / 9.25	16 / 8.5	19 / 10.95	18 / 10.55	18 / 9.21
HSPF / COP		9 / 3.2	9 / 3.05	9 / 3.6	9 / 3.25	9 / 3	10 / 3.4	9 / 3.3	9 / 2.8
Energy Star®		NO							
Cooling Temperature Range	*F	0 - 115	0 - 115	0 - 115	0 - 115	0 - 115	0 - 115	-4 - 115	-4 - 115
Heating Temperature Range	*F	-4 - 75	-4 - 75	-4 - 75	-4 - 75	-4 - 75	-4 - 75	-13 - 75	-13 - 75
INDOOR UNIT									
Air Flow (Min-Max)	CFM	171 - 318	194 - 400	182 - 294	182 - 294	335 - 471	412 - 677	441 - 824	441 - 824
Sound Pressure Level (Cooling / Heating)	dB(A)	28 / 43	28 / 43	26 - 39 / 29 - 41	28 - 42 / 30 - 43	35 - 47 / 35 - 46	37 - 49 / 36 - 47	37 - 55 / 41 - 55	37 - 55 / 41 - 55
Dehumidification	pt/hr	1.69	2.96	1.69	2.96	3.8	4.23	6.34	7.4
Condensate Drain Size (OD)	in	5/8	5/8	5/8	5/8	5/8	5/8	5/8	5/8
Unit Dimension (WxHxD)	in	32 1/8x10 5/16x7 7/8	33 1/4x11 3/8x8 1/4	31 1/8x10 3/4x7 7/8	33 1/4x11 1/4x8 3/8	38 1/8x11 3/4x8 3/4	42 1/4x12 3/4x9 5/8	53 1/8x12 3/4x10	53 1/8x12 3/4x10
Package Dimension (WxHxD)	in	33 1/2 x 13 1/3 x 10 1/3	36 1/8 x 14 1/3 x 11	33 1/2x13 15/16x10 3/4	36 1/4 x 14 15/16 x 11	41 x 15 1/8 x 12 5/8	44 3/8 x 16 x 13 3/8	56 3/4 x 16 5/8 x 14 3/8	56 3/4 x 16 5/8 x 14 3/8
Weight (Net / Gross)	lbs	19.8 / 24.3	23.2 / 27.6	19.8 / 24.3	22 / 26.5	28.6 / 36.4	36.4 / 45.2	43 / 52.9	44.1 / 54
OUTDOOR UNIT									
Compressor Type									
GREE G-10 / 1 - STAGE INVERTER									
Sound Pressure Level (Cooling / Heating)	dB(A)	52	53	50	50	56	59	60	61
Unit Dimension (WxHxD)	in	33 3/8x21 1/4x12 5/8	33 3/8x21 1/4x12 5/8	30 5/8x21 1/4x10 1/8	30 5/8x21 1/4x10 1/8	35 3/4x25 5/8x12 1/4	35 3/4x 25 5/8x12 1/4	39 3/8x31 1/8x14 9/16	39 3/8x31 1/8x14 9/16
Package Dimension (WxHxD)	in	34 5/8 x 22 7/8 x 14 3/16	34 5/8 x 22 7/8 x 14 3/16	33 x 23 x 14	33 x 23 x 14	38 x 27 x 16	38 x 27 x 16	43 x 33 x 19	43 x 33 x 19
Weight (Net / Gross)	lbs	62.8 / 68.4	67.3 / 72.8	58.4 / 63.9	62.8 / 68.4	95 / 105	97 / 103.6	138.9 / 149.9	140 / 151
Refrigerant Charge - R410A	oz	24.7	31.8	24	28.2	42.3	52.9	77.6	88.2
Coil Type									
Aluminum Fin-Copper Tube / Acrylic Resin Protection									
REFRIGERANT PIPING									
Line Set Size (Liquid - Gas)	in	1/4 - 3/8	1/4 - 3/8	1/4 - 3/8	1/4 - 3/8	1/4 - 1/2	1/4 - 5/8	1/4 - 5/8	1/4 - 5/8
Pre-Charge Length	ft	25							
Max. Line Run	ft	10 / 49	10 / 66	49	66	82	82	82	82
Max. Elevation	ft	33	49	33	33	33	33	33	33
ELECTRICAL									
Power Supply		115V / 1PH / 60 HZ				208-230V / 1Ph / 60Hz			
Rated Current Cooling	amps	12.7	13.5	6.3	6.5	10	11	15	18
Rated Current Heating	amps	10.7	13.8	6.2	6.3	10.5	10	16.5	19
MCA	amps	17	20	10	9	15	19	24	24
MOCP	amps	25	30	15	15	20	30	35	35
Main Power Wire Size	AWG	Per Local Code							
Interconnecting Wire Size	AWG	14 / 4							
LIMITED WARRANTY		5 Years Parts, 7 Years Compressor - Residential & Commercial							



AFFORDABLE AND EFFICIENT TO FIT YOUR LIFESTYLE

SINGLE-ZONE 115V



- HIGH EFFICIENCY, UP TO 26.5 SEER / 11.5 HSPF
- **AUTO-CLEAN FUNCTION**
- SMART HOME INTEGRATION
- SUB-ZERO COOLING CAPABILITIES

ELEVATE THE ATMOSPHERE IN ANY ROOM

The Energy Star® - compliant 115V Vireo GEN3 brings high performance, efficiency and flexibility to every room. With a wide operating temperature range, sub-zero cooling capability and an attractive indoor high wall unit, it has never been easier to maintain an optimal indoor environment, regardless of outdoor conditions.

- G10 inverter technology
- WIFI included
- Ultra heat down to -22F
- Ultra cool down to -13F
- Heat pump advantage
- Rugged construction
- 7 fan speeds + Turbo
- Auto Clean function
- Intelligent defrost
- Acrylic resin coil coating
- Low voltage start-up
- Automatic voltage adaption
- Intelligent preheating
- Easier to Clean/Change Filters
- Easier to Service
- Optimized Airflow Design
- Timer function
- Remote & wired controller options
- I-Feel function
- Swing louver control
- Privacy lock mode



VIREO GEN3		3VIR09HP115V1A	3VIR12HP115V1A
System Type		HEAT PUMP	
SYSTEM PERFORMANCE			
Cooling Capacity (Min-Max)	Btu/h	9100 (1700 - 13000)	12100 (3071 - 13400)
Heating Capacity (Min-Max)	Btu/h	10000 (2900 - 14600)	12100 (3071 - 15500)
SEER / EER		26.5 / 14.55	25 / 13
HSPF / COP		11.2 / 4.1	11.5 / 3.61
Energy Star®		YES	
Cooling Temperature Range	°F	-13 - 122	-13 - 122
Heating Temperature Range	°F	-22 - 86	-22 - 86
INDOOR UNIT			
		3VIR09HP115V1AH	3VIR12HP115V1AH
Air Flow (Min-Max)	CFM	194 - 353	230 - 400
Sound Pressure Level (Cooling / Heating)	dB(A)	20 / 40	20 / 43
Dehumidification	pt/hr	1.69	2.96
Condensate Drain Size (OD)	in	5/8	5/8
Unit Dimension (WxHxD)	in	32 1/2 × 11 1/2 × 7 3/4	32 1/2 × 11 1/2 × 7 3/4
Package Dimension (WxHxD)	in	34 1/4 × 13 3/4 × 10 1/8	34 1/4 × 13 3/4 × 10 1/8
Weight (Net / Gross)	lbs	20.9 / 25.4	20.9 / 25.4
OUTDOOR UNIT			
		3VIR09HP115V1AO	3VIR12HP115V1AO
Compressor Type		G-10 / 1 - STAGE INVERTER	
Sound Pressure Level (Cooling / Heating)	dB(A)	52	54
Unit Dimension (WxHxD)	in	33 3/8 × 23 1/2 × 12 5/8	35 3/8 × 23 1/2 × 14 3/4
Package Dimension (WxHxD)	in	34 9/16 × 24 3/4 × 14 3/16	37 3/16 × 24 3/4 × 16 5/16
Weight (Net / Gross)	lbs	75 / 82	87 / 94
Refrigerant Charge - R410A	oz	35.3	47.3
Coil Type		Aluminum Fin-Copper Tube / Acrylic Resin Protection	
REFRIGERANT PIPING			
Line Set Size (Liquid - Gas)	in	1/4 - 3/8	1/4 - 1/2
Pre-Charge Length	ft	25	
Pipe Length (Min / Max)	ft	10 / 49	10 / 66
Max. Pipe Elevation	ft	33	33
ELECTRICAL			
Power Supply		115V / 1PH / 60 HZ	
Rated Current Cooling	amps	12.2	12.5
Rated Current Heating	amps	14.4	13.1
MCA	amps	18	21
MOCP	amps	25	30
Main Power Wire Size	AWG	Per Local Code	
Interconnecting Wire Size	AWG	14 / 4	
LIMITED WARRANTY		5 Years Parts, 7 Years Compressor – Residential & Commercial	



EFFICIENT AND FLEXIBLE TO FIT YOUR LIFESTYLE

SINGLE-ZONE 230V



ELEVATE THE ATMOSPHERE IN ANY ROOM.

The Energy Star®-compliant Vireo GEN3 line brings dramatic new performance and style to every room. Never before has it been so easy to maintain constant indoor comfort, regardless of the outdoor conditions.

- 4 INDOOR UNITS TO CHOOSE
- HIGH EFFICIENCY, UP TO 25.3 SEER / 11.5 HSPF
- AUTO-CLEAN FUNCTION
- SUB-ZERO COOLING CAPABILITIES

- Smart Home Integration
- Ultra heat down to -22F
- Ultra cool down to -20F
- 7 fan speeds + Turbo
- Intelligent defrost
- Low voltage start-up
- Automatic voltage adaption
- Intelligent preheating
- Easier to Clean/Change Filters
- Optimized Airflow Design
- Timer function
- Remote & wired controller options
- I-Feel function
- Swing louver control
- Privacy lock mode

VIREO GEN3	3VIR09HP230V1A	3VIR12HP230V1A	3VIR18HP230V1A	3VIR24HP230V1A
System Type	HEAT PUMP			
SYSTEM PERFORMANCE	SEE INDIVIDUAL INDOOR UNIT DATA TABLES			
Energy Star®	SEE INDIVIDUAL INDOOR UNIT DATA TABLES			
OUTDOOR UNIT	3VIR09HP230V1AO	3VIR12HP230V1AO	3VIR18HP230V1AO	3VIR24HP230V1AO
Cooling Temperature Range	*F -20 - 122	-20 - 122	-20 - 122	-20 - 122
Heating Temperature Range	*F -22 - 86	-22 - 86	-22 - 86	-22 - 86
Compressor Type	G-10 / 1 - Stage Inverter			
Sound Pressure Level (Cooling & Heating)	dB(A) 52	52	57	59
Unit Dimension (WxHxD)	in 33 3/8 x 23 1/2 x 12 5/8	35 3/8 x 23 1/2 x 14 3/4	38 x 27 5/8 x 15 5/8	39 1/2 x 31 1/8 x 16 3/4
Package Dimension (WxHxD)	in 34 3/4 x 25 3/8 x 14 1/4	37 1/3 x 25 3/8 x 16 1/2	40 1/2 x 29 1/2 x 18 1/16	42 5/8 x 33 5/8 x 19 1/4
Weight (Net / Gross)	lbs 73.9 / 80.5	83.8 / 90.4	103.6 / 113.6	124.6 / 135.6
Refrigerant Charge - R410A	oz 36.3	47.3	56.4	63.5
Coil Type	Aluminum Fin / Copper Tube			
REFRIGERANT PIPING	SEE INDIVIDUAL INDOOR UNIT DATA TABLES			
Line Set Size (Liquid - Gas)	in	Size line set by indoor unit port sizes		
Pre-Charge Length	ft	25		
Pipe Length (Min / Max)	ft	10 / 49	10 / 66	10 / 98
Max. Pipe Elevation	ft	33	33	66
ELECTRICAL	SEE INDIVIDUAL INDOOR UNIT DATA TABLES			
Power Supply	208-230V / 1Ph / 60Hz			
Rated Current Cooling	amps	3.0	4.0	6
Rated Current Heating	amps	7.2	7.5	12
MCA	amps	9	10	15
MOCP	amps	15	15	20
Main Power Wire Size	AWG	Per Local Code		
Communication Wire Size	AWG	14 / 4		
LIMITED WARRANTY	5 Years Parts, 7 Years Compressor – Residential & Commercial			

4 INDOOR UNITS TO CHOOSE

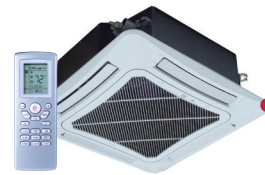
- Wall Mount
- Ceiling Cassette
- Universal Floor/Ceiling
- Slim Duct (High Static)



Slim compact design hangs inconspicuously on the wall and mixes with most interior designs. Built-in WIFI technology allows local to long distance control from smartphones with the GREE+ smart app.

WALL MOUNT

MODEL		3VIR09HP230V1AH	3VIR12HP230V1AH	3VIR18HP230V1AH	3VIR24HP230V1AH
System Type					
HEAT PUMP					
SYSTEM PERFORMANCE (Non-Ducted Indoor Units)					
Cooling Capacity (Min-Max)	Btu/h	9100 (2457 - 10748)	12000 (3071 - 14100)	18000 (5118 - 23202)	22000 (3400 - 28500)
Heating Capacity (Min-Max)	Btu/h	11000 (2593 - 13307)	12000 (3071 - 15500)	18200 (5800 - 23543)	24000 (4300 - 33600)
SEER / EER		25.3 / 14.7	25 / 13	23 / 13	23 / 13
HSPF / COP		11.2 / 3.75	11.5 / 3.61	11 / 3.65	11 / 3.81
Energy Star®		YES			
Air Flow (Min-Max)	CFM	194 - 353	230 - 400	353 - 618	400 - 824
Sound Pressure Level (Min-Max)	dB(A)	25 - 40	27 - 43	31 - 46	35 - 53
Dehumidification	pt/hr	1.70	3	3.8	5.1
Condensate Drain Size (OD)	in	5 / 8	5 / 8	5 / 8	5 / 8
Unit Dimension (WxHxD)	in	32 1/2 x 11 1/2 x 7 3/4	32 1/2 x 11 1/2 x 7 3/4	38 5/8 x 12 1/4 x 8 3/4	42 5/8 x 13 1/8 x 9 3/4
Package Dimension (WxHxD)	in	34 1/4 x 13 3/4 x 10 1/8	34 1/4 x 13 3/4 x 10 1/8	40 7/8 x 14 7/8 x 11 5/16	44 7/16 x 16 x 12 3/4
Weight (Net / Gross)	lbs	21 / 25.4	21 / 25.4	30 / 35.3	35.3 / 42
Line Set Size (Liquid - Gas)	in	1/4 - 3/8	1/4 - 1/2	1/4 - 5/8	1/4 - 5/8
Power Supply		208-230V / 1Ph / 60Hz (Powered by the Outdoor Unit)			
LIMITED WARRANTY		5 Years Parts, 7 Years Compressor – Residential & Commercial			



Suitable for any room; installs easily in suspended ceilings.

CEILING CASSETTE

MODEL		CAS12HP230V1BC	CAS18HP230V1BC	CAS24HP230V1BC
System Type				
HEAT PUMP				
SYSTEM PERFORMANCE (Non-Ducted Indoor Units)				
Cooling Capacity	Btu/h	12000	18000	22000
Heating Capacity	Btu/h	12000	18200	24000
SEER / EER		24 / 13	20 / 10.25	21 / 12
HSPF / COP		11.3 / 4.0	10 / 2.96	11.5 / 3.81
Energy Star®		YES	NO	NO
Air Flow (Min-Max)	CFM	265 - 383	265 - 418	518 - 753
Sound Pressure Level	dB(A)	34 - 44	35 - 47	36 - 47
Dehumidification	pt/hr	2.96	3.80	5.3
Condensate Drain Size (OD)	in	1	1	1
Unit Dimension (WxHxD)	in	23 1/2 x 9 1/2 x 23 1/2	23 1/2 x 9 1/2 x 23 1/2	33 x 9 1/2 x 33
Package Dimension (WxHxD)	in	30 1/2 x 11 1/4 x 29	30 1/2 x 11 1/4 x 29	37 1/2 x 12 1/8 x 37 1/2
Weight (Net / Gross)	lbs	44 / 53	44 / 53	57.3 / 70.5
Line Set Size (Liquid - Gas)	in	1/4 - 3/8	1/4 - 1/2	3/8 - 5/8
Power Supply		208-230V / 1Ph / 60Hz (Powered by the Outdoor Unit)		
LIMITED WARRANTY		5 Years Parts, 7 Years Compressor – Residential & Commercial		
CASSETTE GRILLE (Required)				
		CASGRILLEBSM	CASGRILLEBSM	CASGRILLEBLG
Grille Dimension (WxHxD)	in	26 3/8 x 2 x 26 3/8	26 3/8 x 2 x 26 3/8	37 7/16 x 2 3/8 x 37 7/16
Package Dimension (WxHxD)	in	30 x 3 1/2 x 30	30 x 3 1/2 x 30	40 1/2 x 4 5/8 x 40 3/4
Weight (Net / Gross)	lbs	7.7 / 11	7.7 / 11	15.4 / 24.25



Slender, lightweight and attractive; ideal for limited spaces. Suspend from ceiling or mount low on wall.

UNIVERSAL FLOOR/CEILING

MODEL		FLR09HP230V1BF	FLR12HP230V1BF	FLR18HP230V1BF	FLR24HP230V1BF
System Type					
HEAT PUMP					
SYSTEM PERFORMANCE (Non-Ducted Indoor Units)					
Cooling Capacity	Btu/h	9100	12000	18000	22000
Heating Capacity	Btu/h	11000	12000	18200	24000
SEER / EER		19.5 / 13.3	19.6 / 12.5	15 / 10.25	20 / 12
HSPF / COP		11.2 / 3.75	10.5 / 3.5	8.5 / 2.6	10 / 3.3
Energy Star®		YES	YES	NO	NO
Air Flow (Min-Max)	CFM	257 - 412	257 - 412	241 - 400	424 - 560
Sound Pressure Level (Min-Max)	dB(A)	26 - 38	26 - 38	27 - 38	27 - 38
Dehumidification	pt/hr	1.7	3	3.8	5.3
Condensate Drain Size	in	11/16	11/16	11/16	11/16
Unit Dimension (WxHxD)	in	34 1/4 x 26 1/4 x 9 1/4	34 1/4 x 26 1/4 x 9 1/4	34 1/4 x 26 1/4 x 9 1/4	47 1/4 x 26 1/4 x 9 1/4
Package Dimension (WxHxD)	in	40 1/2 x 30 1/4 x 11 1/4	40 1/2 x 30 1/4 x 11 1/4	40 1/2 x 30 1/4 x 11 1/4	53 1/2 x 30 1/4 x 11 1/4
Weight (Net / Gross)	lbs	55 / 66.2	55 / 66.2	66.3 / 67.3	72.8 / 88.2
Line Set Size (Liquid - Gas)	in	1/4 - 3/8	1/4 - 1/2	1/4 - 1/2	3/8 - 5/8
Power Supply		208-230V / 1Ph / 60Hz (Powered by the Outdoor Unit)			
LIMITED WARRANTY		5 Years Parts, 7 Years Compressor – Residential & Commercial			



Hides above suspended ceiling or in closet space; delivers air via ducting or suitable ceiling /wall grilles.

SLIM DUCT

MODEL		DUCT09HP230V1BD	DUCT12HP230V1BD	DUCT18HP230V1BD	DUCT24HP230V1BD
System Type					
HEAT PUMP					
SYSTEM PERFORMANCE (Ducted Indoor Units)					
Cooling Capacity	Btu/h	9100	12000	18000	22000
Heating Capacity	Btu/h	11000	12000	18200	24000
SEER / EER		21 / 14.2	20.5 / 11.8	15.2 / 8.85	20 / 12.5
HSPF / COP		11.2 / 3.74	10.6 / 3.78	9.7 / 3.18	10 / 3.81
Energy Star®		YES	NO	NO	YES
Air Flow (Min-Max)	CFM	188 - 324	212 / 353	288 / 589	406 / 736
External Static Pressure	In W.c.	0.6	0.6	0.8	0.8
Sound Pressure Level	dB(A)	25 - 36	26 - 38	26 - 39	28 - 42
Dehumidification	pt/hr	1.70	3	3.8	5.3
Condensate Drain Size	in	1	1	1	1
Unit Dimension (WxHxD)	in	32 11/16 x 11 7/8 x 29 11/16	32 11/16 x 11 7/8 x 29 11/16	44 1/2 x 11 7/8 x 29 3/4	44 1/2 x 11 7/8 x 29 3/4
Package Dimension (WxHxD)	in	35 1/4 x 13 5/8 x 31 3/4	35 1/4 x 13 5/8 x 31 3/4	47 5/16 x 13 5/8 x 32	47 5/16 x 13 5/8 x 32
Weight (Net / Gross)	lbs	71 / 84	71 / 84	93 / 107	93 / 107
Line Set Size (Liquid - Gas)	in	1/4 - 3/8	1/4 - 1/2	3/8 - 5/8	3/8 - 5/8
Power Supply		208-230V / 1Ph / 60Hz (Powered by the Outdoor Unit)			
LIMITED WARRANTY		5 Years Parts, 7 Years Compressor – Residential & Commercial			



OPTIMAL PERFORMANCE IN THE MOST CHALLENGING CLIMATES



- HIGH EFFICIENCY, 23 SEER / 10.5 HSPF
- HEATING RANGE: -31°F - 75°F
- COOLING RANGE: 0°F TO 115°F
- SLEEK LOOK TO BLEND WITH YOUR DECOR
- SUPERIOR CONTROL

DISCRETE AND ELEGANT DESIGN.

Discrete and elegant design, the Vireo ULTRA unit can cool and heat in extreme conditions... from -31°F to 115°F with utmost energy efficiency. Both sizes include GREE's G10 2 stage / 3 cylinder variable speed compressor technology and Built-in WIFI.

- G10 inverter technology
- 30,000 - 36,000 BTU models
- Heat pump advantage
- Rugged construction
- Multiple fan speeds
- Intelligent defrost
- Acrylic resin coil coating
- Low voltage start-up
- Automatic voltage adaption
- Intelligent preheating
- Washable, polymeric air filters
- Timer function
- Remote & wired controller options
- I-Feel function
- Swing louver control
- Privacy lock mode
- Sleep function
- Energy saving mode
- Fahrenheit / Celsius
- LED display settings
- Self-diagnosis



VIREO+ ULTRA		VIRU30HP230V1A	VIRU30HP230V1A
System Type		HEAT PUMP	
SYSTEM PERFORMANCE			
Cooling Capacity (Min-Max)	Btu/h	28000 (5500 - 30700)	33000 (8800 - 40900)
Heating Capacity (Min-Max)	Btu/h	28700 (4400 - 35200)	34600 (16700 - 49400)
SEER / EER		23 / 11.2	23 / 10.25
HSPF / COP		10.5 / 3.11	10.5 / 3.17
Energy Star®		NO	
Cooling Temperature Range	°F	0 - 115	0 - 115
Heating Temperature Range	°F	-31 - 75	-31 - 75
INDOOR UNIT		VIRU30HP230V1AH	VIRU36HP230V1AH
Air Flow (Min-Max)	CFM	441 - 824	441 - 824
Sound Pressure Level (Cooling / Heating)	dB(A)	36 - 55 / 36 - 55	36 - 55 / 36 - 55
Dehumidification	pt/hr	6.34	7.40
Condensate Drain Size (OD)	in	5/8	5/8
Unit Dimension (WxHxD)	in	53 3/16 x 12 5/8 x 10	53 3/16 x 12 5/8 x 10
Package Dimension (WxHxD)	in	57 x 16 5/8 x 14	57 x 16 5/8 x 14
Weight (Net / Gross)	lbs	42 / 52	42 / 52
OUTDOOR UNIT		VIRU30HP230V1AO	VIRU36HP230V1AO
Compressor Type		GREE G-10 / 2 - STAGE / 3 CYLINDER INVERTER	
Sound Pressure Level (Cooling / Heating)	dB(A)	61 / 61	63 / 63
Unit Dimension (WxHxD)	in	43 5/8 x 43 1/2 x 17 5/16	43 5/8 x 43 1/2 x 17 5/16
Package Dimension (WxHxD)	in	45 5/8 x 48 5/8 x 19	45 5/8 x 48 5/8 x 19
Weight (Net / Gross)	lbs	229 / 240	254 / 265
Refrigerant Charge - R410A	oz	123.5	123.5
Coil Type		Aluminum Fin-Copper Tube / Acrylic Resin Protection	
REFRIGERANT PIPING			
Line Set Size (Liquid - Gas)	in	1/4 - 5/8	1/4 - 5/8
Pre-Charge Length	ft	25	
Pipe Length (Min / Max)	ft	10 / 165	10 / 165
Max. Pipe Elevation	ft	100	100
ELECTRICAL			
Power Supply		208-230V / 1Ph / 60Hz	
Rated Current Cooling	amps	17	19
Rated Current Heating	amps	25	30
MCA	amps	30	32
MOCP	amps	50	50
Main Power Wire Size	AWG	Per Local Code	
Interconnecting Wire Size	AWG	14 / 4	
LIMITED WARRANTY		5 Years Parts, 7 Years Compressor - Residential & Commercial	



DISCOVER THE PREMIER GEM OF HEATING AND COOLING



THE HALLMARK OF ELEGANCE & FUNCTIONALITY.

With the Sapphire wall mount ductless mini-splits, you can keep any room comfortable without sacrificing aesthetics. The quiet, unobtrusive design delivers advanced performance with an industry-best energy efficiency rating of up to 38 SEER in cooling and 15 HSPF in heating.

- HIGH EFFICIENCY, 38 SEER / 15 HSPF
- G10 INVERTER TECHNOLOGY
- INTELLIGENT DEFROST
- SELF-DIAGNOSIS
- SIMPLE OPERATION

- Built-in WIFI
- Ultra heat down to -22°F
- Energy Star®
- High efficiency, up to 38 SEER / 15 HSPF
- Precise airflow control
- Multiple fan speeds
- Intelligent preheating
- Intelligent defrost
- Low voltage start-up
- Sleek look to blend with your decor
- I-Feel function
- Privacy lock mode
- Sleep function
- Timer function
- Self-diagnosis
- Cleanable air filter

SAPPHIRE		SAP09HP230V1A	SAP12HP230V1A	SAP18HP230V1A	SAP24HP230V1A
System Type		HEAT PUMP			
SYSTEM PERFORMANCE					
Cooling Capacity (Min-Max)	Btu/h	9000 (1535 - 12966)	12000 (2900 - 15354)	18000 (4094 - 21837)	22000 (6800 - 30700)
Heating Capacity (Min-Max)	Btu/h	9000 (2388 - 13648)	12200 (3071 - 18766)	18000 (4094 - 24566)	24000 (6800 - 32000)
SEER / EER		38 / 16.67	30.5 / 15.3	24.5 / 13.54	21.5 / 13
HSPF / COP		15 / 4.47	14 / 3.8	12 / 3.52	12 / 3.5
Energy Star®		YES			
Cooling Temperature Range	°F	0 - 129	0 - 129	0 - 129	0 - 129
Heating Temperature Range	°F	-22 - 75	-22 - 75	-22 - 75	-22 - 75
INDOOR UNIT					
		SAP09HP230V1AH	SAP12HP230V1AH	SAP18HP230V1AH	SAP24HP230V1AH
Air Flow (Min-Max)	CFM	206 - 424	235 - 500	353 - 736	383 - 824
Sound Pressure Level (Cooling / Heating)	dB(A)	19 - 46 / 19 - 46	22 - 49 / 22 - 49	34 - 51 / 34 - 51	27 - 54 / 37 - 55
Dehumidification	pt/hr	1.69	2.96	3.8	4.23
Condensate Drain Size (OD)	in	5/8	5/8	5/8	5/8
Unit Dimension (WxHxD)	in	39 7/8 x 12 1/8 x 8 3/4	39 7/8 x 12 1/8 x 8 3/4	44 3/16 x 13 x 9 13/16	44 3/16 x 13 x 9 13/16
Package Dimension (WxHxD)	in	42 7/16 x 14 13/16 x 11 13/16	42 7/16 x 14 13/16 x 11 13/16	46 7/8 x 16 x 13 3/16	46 7/8 x 16 x 13 3/16
Weight (Net / Gross)	lbs	29.8 / 36.4	29.8 / 36.4	36.4 / 44.1	35.3 / 41.9
OUTDOOR UNIT					
		SAP09HP230V1AO	SAP12HP230V1AO	SAP18HP230V1AO	SAP24HP230V1AO
Compressor Type		GREE G-10 / 2 - STAGE INVERTER			
Sound Pressure Level (Cooling / Heating)	dB(A)	57 / 57	53 / 53	59 / 59	59 / 59
Unit Dimension (WxHxD)	in	35 13/32 x 23 1/2 x 14 7/8	35 13/32 x 23 1/2 x 14 7/8	38 5/8 x 31 1/8 x 16 13/16	38 5/8 x 31 1/8 x 16 13/16
Package Dimension (WxHxD)	in	37 3/16 x 24 13/16 x 16 7/16	37 3/16 x 24 13/16 x 16 7/16	42 1/2 x 33 1/8 x 19 1/8	42 1/2 x 33 1/8 x 19 1/8
Weight (Net / Gross)	lbs	99.2 / 105.8	105.8 / 49.4	141.1 / 152.1	147.7 / 158.8
Refrigerant Charge - R410A	oz	50.4	49.4	70.6	81.1
Coil Type		Aluminum Fin-Copper Tube / Acrylic Resin Protection			
REFRIGERANT PIPING					
Line Set Size (Liquid - Gas)	in	1/4 - 1/2	1/4 - 1/2	1/4 - 5/8	1/4 - 5/8
Pre-Charge Length	ft	25			
Pipe Length (Min / Max)	ft	10 / 49	10 / 98	10 / 131	10 / 164
Max. Pipe Elevation	ft	33	49	66	98
ELECTRICAL					
Power Supply		208-230V / 1Ph / 60Hz			
Rated Current Cooling	amps	6.2	6.5	10.8	16.4
Rated Current Heating	amps	6.9	6.9	10.8	16.4
MCA	amps	9	9	22	22
MOCP	amps	15	15	30	35
Main Power Wire Size	AWG	Per Local Code			
Interconnecting Wire Size	AWG	14 / 4			
LIMITED WARRANTY		5 Years Parts, 7 Years Compressor - Residential & Commercial			



NOTABLE COMFORT, UNOBTRUSIVE STYLING



- HIGH EFFICIENCY, 20 SEER / 10 HSPF
- 3 OPTIONS FOR INDOOR UNIT
- DESIGNED FOR LIMITED SPACES
- VERSATILE CHOICES
- ONE-TO-ONE CONFIGURATIONS

CLIMATE CONTROL SOLUTIONS FOR EVERY COMMERCIAL NEED.

Powered by GREE's G10 inverter technology, the U-Match Series offers the most energy-efficient solutions for a wide range of commercial climate control needs. U-Match systems are available in a choice of three sleek indoor options: Ceiling Cassette, Slim Duct or Universal Floor/Ceiling units.



OUTDOOR UNIT

U-MATCH	UMAT18HP230V1A	UMAT24HP230V1A	UMAT30HP230V1A	UMAT36HP230V1A	UMAT42HP230V1A	UMAT48HP230V1A
System Type	HEAT PUMP					
SYSTEM PERFORMANCE						
Cooling Capacity (Min-Max)	Btu/h 17100 (5400 - 19800)	23800 (7400 - 29000)	28200 (8800 - 31400)	34000 (10800 - 39000)	39500 (11000 - 41000)	48000 (20400 - 50500)
Heating Capacity (Min-Max)	Btu/h 18800- (2457 - 11500)	13000 (2388 - 13648)	18000 (4100 - 21000)	24000 (4500 - 25900)	30000 (7848 - 36000)	34600 (8530 - 37020)
Energy Star®	NO					
Cooling Temperature Range	°F 0 - 118					
Heating Temperature Range	°F 0 - 75					
OUTDOOR UNIT						
Compressor Type	GREE G-10 / 2 - STAGE INVERTER					
Sound Pressure Level (Cooling / Heating)	dB(A) 56 / 56	57 / 57	58 / 58	63 / 63	61 / 61	59 / 59
Unit Dimension (WxHxD)	in 37 5/8 x 27 5/8 x 15 5/8	37 5/8 x 27 5/8 x 15 5/8	38 5/8 x 31 1/8 x 16 3/4	43 1/2 x 43 5/16 x 17 5/16	37 13/16 x 53 1/8 x 16 1/8	37 13/16 x 53 1/8 x 16 1/8
Package Dimension (WxHxD)	in 40 7/16 x 29 x 18	42 1/2 x 33 1/8 x 19 1/8	42 1/2 x 33 1/8 x 19 1/8	45 1/2 x 44 x 19	40 5/16 x 54 5/16 x 17 5/16	40 5/16 x 54 5/16 x 17 5/16
Weight (Net / Gross)	lbs 105.8 / 114.7	152.1 / 163.2	158.8 / 169.8	205.1 / 222.7	209.5 / 231.5	231.5 / 253.6
Refrigerant Charge - R410A	oz 49.4	77.6	84.7	123.5	130.5	141.1
Coil Type	Aluminum Fin-Copper Tube / Acrylic Resin Protection					
REFRIGERANT PIPING						
Line Set Size (Liquid - Gas)	in 1/4 - 1/2	3/8 - 5/8	3/8 - 5/8	3/8 - 5/8	3/8 - 5/8	3/8 - 5/8
Pre-Charge Length	ft 25					
Pipe Length (Min / Max)	ft 10 / 164	10 / 164	10 / 164	10 / 164	10 / 164	10 / 230
Max. Pipe Elevation	ft 49					
ELECTRICAL						
Power Supply	208-230V / 1Ph / 60Hz					
Rated Current Cooling	amps 12.8	19.4	20	23.8	25.1	34.3
Rated Current Heating	amps 12.3	20.5	21	24.3	24.8	19
MCA	amps 17	24	24	29	31	45
MOCP	amps 25	40	40	45	50	70
Main Power Wire Size	AWG Per Local Code					
Communication Wire Size	AWG 18 / 2					
LIMITED WARRANTY	5 Years Parts, 7 Years Compressor - Residential & Commercial					

- G10 inverter technology
- Heavy gauge steel cabinet
- Cooling range: 0°F - 118°F
- Eco-friendly R410A refrigerant
- Remote & wired controller options
- Sound levels down to 56 dB(A) on outdoor unit
- Self-diagnosis
- Washable, polymeric air filters
- Automatic voltage adaption
- Multiple fan speeds
- Swing louver control

SINGLE-ZONE VERSATILITY

INDOOR UNIT

U-MATCH SYSTEMS featuring the G10 Inverter Heat Pump are the green choice of environmentally-conscious business owners and builders everywhere.



CEILING CASSETTE
Suitable for any room;
installs easily in
suspended ceilings.



UNIVERSAL FLOOR / CEILING
Slender, lightweight and attractive;
ideal for limited spaces. Suspend from
ceiling or mount low on wall.



SLIM DUCT
Hides above suspended ceiling
or in closet space; delivers air
via ducting or suitable ceiling /
wall grilles.

CEILING CASSETTE

MODEL	UMAT18HP230V1AC	UMAT24HP230V1AC	UMAT30HP230V1AC	UMAT36HP230V1AC	UMAT42HP230V1AC	UMAT48HP230V1AC
System Type	HEAT PUMP					
SYSTEM PERFORMANCE						
Cooling Capacity (Min-Max)	Btu/h 17100 (5400 - 18700)	23800 (8200 - 29000)	28200 (8800 - 31400)	34000 (10800 - 39000)	39500 (11000 - 41000)	48000 (20400 - 50500)
Heating Capacity (Min-Max)	Btu/h 18400 (2457 - 11500)	27200 (8200 - 32400)	31200 (8200 - 33600)	41000 (9800 - 49500)	44000 (12000 - 51000)	54500 (17500 - 61500)
SEER / EER	16 / 10.05	18 / 10.65	20 / 10.4	16 / 10.35	16 / 8.95	16 / 8.7
HSPF / COP	9 / 2.7	10 / 3.38	9 / 3.41	9 / 3.2	9 / 2.92	9.3 / 3.32
Energy Star®	NO					
INDOOR UNIT						
Air Flow - Nominal	CFM 445	765	880	1095	1095	1350
Sound Pressure Level (Cooling / Heating)	dB(A) 44 - 47 / 44 - 47	42 - 47 / 42 - 47	45 - 49 / 45 - 49	46 - 51 / 46 - 51	46 - 51 / 46 - 51	47 - 53 / 47 - 53
Dehumidification	pt/hr 3.8	5.1	6.3	7.2	7.8	9.5
Condensate Drain Size (OD)	in 1					
Unit Dimension (WxHxD)	in 26 1/8 x 9 7/16 x 23 7/16	36 x 9 7/16 x 33 1/8	36 x 12 5/8 x 33 1/8	36 x 12 5/8 x 33 1/8	36 x 12 5/8 x 33 1/8	36 x 11 7/16 x 36
Package Dimension (WxHxD)	in 30 1/2 x 11 1/4 x 28 7/8	45 1/8 x 12 7/8 x 37 5/8	45 1/8 x 16 x 37 5/8	45 1/8 x 16 x 37 5/8	45 1/8 x 16 x 37 5/8	40 1/4 x 14 1/4 x 39
Weight (Net / Gross)	lbs 20 / 24	27 / 38	32 / 44	32 / 44	32 / 44	43 / 50
REFRIGERANT PIPING						
Line Set Size (Liquid - Gas)	in 1/4 - 1/2	3/8 - 5/8	3/8 - 5/8	3/8 - 5/8	3/8 - 5/8	3/8 - 5/8
Pre-Charge Length	ft 25					
Pipe Length (Min / Max)	ft 10 / 164	10 / 164	10 / 164	10 / 164	10 / 164	10 / 230
Max. Pipe Elevation	ft 49					
ELECTRICAL						
Power Supply (Dedicated Circuit)	208-230V / 1Ph / 60Hz					
MCA	amps 1	1	1.5	1.5	1.5	2
MOCP	amps 15					
Main Power Wire Size	AWG Per Local Code					
LIMITED WARRANTY	5 Years Parts, 7 Years Compressor - Residential & Commercial					
CASSETTE GRILLE (Required)						
Grille Dimension (WxHxD)	in 26 7/16 x 2 x 26 7/16	37 1/2 x 2 7/16 x 37 1/2	37 1/2 x 2 7/16 x 37 1/2	37 1/2 x 2 7/16 x 37 1/2	37 1/2 x 2 7/16 x 37 1/2	41 x 2 5/8 x 41
Package Dimension (WxHxD)	in 30 x 3 1/2 x 30	40 5/8 x 4 5/8 x 40 3/4	40 5/8 x 4 5/8 x 40 3/4	40 5/8 x 4 5/8 x 40 3/4	40 5/8 x 4 5/8 x 40 3/4	44 5/8 x 5 x 44 5/8
Weight (Net / Gross)	lbs 3.5 / 5	7 / 11	7 / 11	7 / 11	7 / 11	8 / 12

UNIVERSAL FLOOR / CEILING

MODEL	UMAT18HP230V1AF	UMAT24HP230V1AF	UMAT30HP230V1AF	UMAT36HP230V1AF	UMAT42HP230V1AF	UMAT48HP230V1AF
System Type	HEAT PUMP					
SYSTEM PERFORMANCE						
Cooling Capacity (Min-Max)	Btu/h 17100 (5400-19800)	23800 (8200 - 27800)	28200 (8800 - 31400)	34000 (10800 -39000)	39500 (12000 - 42500)	48000 (20400 - 50500)
Heating Capacity (Min-Max)	Btu/h 19100 (4700 - 23200)	27200 (8200 - 30600)	31200 (8200 - 33600)	41000 (9800 - 49500)	44000 (13000 - 52500)	54500 (17500 - 61500)
SEER / EER	17 / 11	16 / 10.65	17 / 10.44	16 / 10.35	16 / 9.75	16 / 8.73
HSPF / COP	9.5 / 3.6	10 / 3.38	9 / 3.54	9 / 3.2	9 / 3.2	9 / 3.48
Energy Star®	NO					
INDOOR UNIT						
Air Flow - Nominal	CFM 585	705	880	1115	1115	1350
Sound Pressure Level (Cooling / Heating)	dB(A) 32 - 42 / 32 - 42	40 - 48 / 40 - 48	38 - 46 / 38 - 46	46 - 53 / 46 - 53	47 - 54 / 47 - 54	46 - 55 / 46 - 55
Dehumidification	pt/hr 3.40	4.50	5.5	6.80	7.20	8.9
Condensate Drain Size (OD)	in 3/4					
Unit Dimension (WxHxD)	in 48 x 27 5/8 x 8 15/16	48 x 27 5/8 x 8 15/16	55 15/16 x 27 5/8 x 9 5/8	55 15/16 x 27 5/8 x 9 5/8	55 15/16 x 27 5/8 x 9 5/8	66 15/16 x 27 5/8 x 9 5/8
Package Dimension (WxHxD)	in 52 13/16 x 32 5/16 x 11 13/16	52 13/16 x 32 5/16 x 11 13/16	60 13/16 x 32 1/5 x 13	60 13/16 x 32 1/5 x 13	60 13/16 x 32 1/5 x 13	71 15/16 x 32 1/2 x 13
Weight (Net / Gross)	lbs 39 / 48	40 / 50	48 / 56	48 / 56	50 / 58	59 / 68
REFRIGERANT PIPING						
Line Set Size (Liquid - Gas)	in 1/4 - 1/2	3/8 - 5/8	3/8 - 5/8	3/8 - 5/8	3/8 - 5/8	3/8 - 5/8
Pre-Charge Length	ft 25					
Pipe Length (Min / Max)	ft 10 / 164	10 / 164	10 / 164	10 / 164	10 / 164	10 / 230
Max. Pipe Elevation	ft 49					
ELECTRICAL						
Power Supply (Dedicated Circuit)	208-230V / 1Ph / 60Hz					
MCA	amps 1	1	2	2	2	3
MOCP	amps 15					
Main Power Wire Size	AWG Per Local Code					
LIMITED WARRANTY	5 Years Parts, 7 Years Compressor - Residential & Commercial					

SLIM DUCT

MODEL	UMAT18HP230V1AD	UMAT24HP230V1AD	UMAT30HP230V1AD	UMAT36HP230V1AD	UMAT42HP230V1AD	UMAT48HP230V1AD
System Type	HEAT PUMP					
SYSTEM PERFORMANCE						
Cooling Capacity (Min-Max)	Btu/h 17100 (5400 - 19800)	23800 (7400 - 29000)	28200 (8200 - 29600)	34000 (10800 - 39000)	39500 (12000 - 42500)	48000 (20400 - 49500)
Heating Capacity (Min-Max)	Btu/h 18800 (4700 - 23200)	27200 (8200 - 32400)	31200 (8200 - 33600)	41000 (9800 - 49500)	44000 (13000 - 52500)	54500 (17500 - 58000)
SEER / EER	16/11	16 / 10.65	16 / 8.55	16 / 10.35	16 / 9.5	16 / 9.3
HSPF / COP	9.5 / 3.32	10 / 3.38	9 / 2.96	9 / 3.2	9 / 3.32	9 / 3.1
Energy Star®	NO					
INDOOR UNIT						
Air Flow - Nominal	CFM 585	820	820	1175	1175	1470
External Static Pressure	In W.c. 0.12	0.3	0.3	0.4	0.4	0.5
Sound Pressure Level (Cooling / Heating)	dB(A) 28 - 39 / 28 - 39	40 - 46 / 40 - 46	40 - 46 / 40 - 46	44 - 52 / 44 - 52	44 - 52 / 44 - 52	45 - 53 / 45 - 53
Dehumidification	pt/hr 3	4	4.6	5.7	6.3	8
Condensate Drain Size (OD)	in 13/16	3/4	3/4	3/4	3/4	3/4
Unit Dimension (WxHxD)	in 40 3/4 x 10 7/16 x 28 5/16	50 7/16 x 10 5/8 x 22	50 7/16 x 10 5/8 x 22	48 1/4 x 11 7/16 x 30 1/2	48 1/4 x 11 7/16 x 30 1/2	52 13/16 x 13 13/16 x 29 1/2
Package Dimension (WxHxD)	in 44 1/8 x 12 1/8 x 31 5/16	53 x 10 5/8 x 23 7/16	53 x 10 5/8 x 23 7/16	52 5/8 x 11 7/16 x 34 7/16	52 5/8 x 11 7/16 x 34 7/16	56 x 17 5/16 x 32 13/16
Weight (Net / Gross)	lbs 72.6 / 83.6	74.8 / 85.8	77 / 85.8	101.2 / 116.6	101.2 / 116.6	123.2 / 154
REFRIGERANT PIPING						
Line Set Size (Liquid - Gas)	in 1/4 - 1/2	3/8 - 5/8	3/8 - 5/8	3/8 - 5/8	3/8 - 5/8	3/8 - 5/8
Pre-Charge Length	ft 25					
Pipe Length (Min / Max)	ft 10 / 164	10 / 164	10 / 164	10 / 164	10 / 164	10 / 230
Max. Pipe Elevation	ft 49					
ELECTRICAL						
Power Supply (Dedicated Circuit)	208-230V / 1Ph / 60Hz					
MCA	amps 1	2	2	3	3	5
MOCP	amps 15					
Main Power Wire Size	AWG Per Local Code					
LIMITED WARRANTY	5 Years Parts, 7 Years Compressor - Residential & Commercial					



PROVIDES **OUTDOOR AND INDOOR FLEXIBILITY** WITH **COMFORT.**



- 24 VAC THERMOSTAT CONTROL
- UP TO 20 SEER / 10.5 HSPF EFFICIENCY
- ULTRA HEATING & COOLING CAPABILITIES

WHEN YOU WANT TO FLEXX

With GREE's inverter technology and horizontal (side) discharge design, the FLEXX delivers up to 20 SEER efficiency with 24 VAC flexibility. The FLEXX is ideal for add-on replacement and new construction with ULTRA heating & cooling capabilities, a quiet operation and small outdoor footprint.

- High efficiency, up to 20 SEER / 10.5 HSPF
- Cooling range: 5°F - 129°F
- Heating range: -22°F - 75°F
- Sound levels down to 61 dB(A) on outdoor unit
- Conventional, 24 VAC thermostat control
- Eco-friendly R410A refrigerant
- All FLEXX ODU's have golden fin and all IDU's have blue fin
- Golden Fin Equipment - 1500 Hrs Salt Spray tested
- Blue Fin Equipment - 500 Hrs Salt Spray tested

FLEXX	FLEXX36HP230V1A		FLEXX60HP230V1A		
System Type	HEAT PUMP				
Indoor Model	FLEXX24HP230V1BH	FLEXX36HP230V1BH	FLEXX48HP230V1BH	FLEXX60HP230V1BH	
SYSTEM PERFORMANCE					
Cooling Capacity	Btu/h	24000 (12000 - 24000)	36000 (18000 - 37000)	48000 (34000 - 48000)	54000 (35000 - 54000)
Heating Capacity	Btu/h	24000 (12000 - 30000)	36000 (18000 - 38000)	48000 (34000 - 52000)	54000 (35000 - 60000)
SEER / EER		20 / 12.5	18 / 11	18 / 11	17 / 10.5
HSPF / COP		10.5 / 4.2	10 / 3.5	10.5 / 3.6	10 / 3.45
Energy Star®		YES	NO	NO	NO
Cooling Temperature Range	°F	5 - 129		5 - 129	
Heating Temperature Range	°F	-22 - 75		-22 - 75	
OUTDOOR UNIT DATA					
		FLEXX36HP230V1AO		FLEXX60HP230V1AO	
Power Supply	VAC	208-230V / 1Ph / 60Hz			
Sound Pressure Level	dB(A)	62		61	
Control Voltage	VAC	24		24	
External Dimensions (W x H x D)	in	37 x 32 1/4 x 18 1/8		39 3/8 x 53 5/8 x 14 1/2	
Net Weight / Gross Weight	lbs	217 / 240		308 / 337	
Refrigerant Charge - R410A	oz	148		220.5	
Additional Charge	oz/ft	0.32		0.32	
INDOOR AIR HANDLER					
		FLEXX24HP230V1BH	FLEXX36HP230V1BH	FLEXX48HP230V1BH	FLEXX60HP230V1BH
Power Supply	VAC	208-230V / 1Ph / 60 Hz			
Sound Pressure Level	dB(A)	45	47	50	51
Electric Heater (Optional)	kW	5, 8, 10	5, 8, 10, 15	10, 15, 20	10, 15, 20
Air Flow	CFM	940	1000	1470	1600
"External Static Pressure (Up to)	In W.c.	1.0	1.0	1.0	1.0
Dehumidification	pt/hr	6.03	9.68	9.94	13.29
External Dimensions (W x H x D)	in	21 1/4 x 48 1/4 x 21 1/4		24 3/4 x 57 x 21 1/4	
Net Weight / Gross Weight	lbs	156 / 169		202 / 218	
INDOOR A COIL					
		FLEXX24C	FLEXX36C	FLEXX48C	FLEXX60C
External Dimensions (W x H x D)	in	17 1/2 x 23 x 21 1/4		24 1/2 x 28 1/2 x 21 1/4	
Net Weight / Gross Weight	lbs	64 / 75		95 / 110	
REFRIGERANT PIPING					
Line Set Size (Liquid - Gas) - Flared Connections	in	3/8 - 3/4			
Pre-Charge Length	ft	31			
Pipe Length (Min / Max)	ft	10 / 100			
Max. Pipe Elevation	ft	50			
LIMITED WARRANTY		5 Years Parts, 7 Years Compressor - Residential & Commercial			

SINGLE-ZONE QUICK REFERENCE GUIDE

NOTES

- Voltage on all U-Match ID and OD Units: 208/230-1-60
- Wired Controller (XK60) min. wire (AWG): 18/2 THNN 300V Stranded
- Dedicated Indoor Unit Power Wire (AWG): 14 AWG 208/230-1-60
- Max elevation on all U-Match systems is 49'

LIGHT COMMERCIAL APPLICATIONS - THE U-MATCH SERIES

Nominal Capacity (Btu)	Line Set (Port) Size	Max Elevation	Max Line Length	MCA / MOCP	Min AWG
OUTDOOR MODEL U-MATCH					
UMAT18HP230V1AO	18K	1/4 x 1/2	49'	17 / 25	
UMAT24HP230V1AO	24K	3/8 x 5/8	49'	24 / 40	
UMAT30HP230V1AO	30K	3/8 x 5/8	49'	24 / 40	Size Per Local Code
UMAT36HP230V1AO	36K	3/8 x 5/8	49'	29 / 45	
UMAT42HP230V1AO	42K	3/8 x 5/8	49'	31 / 50	
UMAT48HP230V1AO	48K	3/8 x 5/8	49'	45 / 70	

INDOOR MODELS					
Universal Floor Ceiling	Nominal Capacity (Btu)	SEER / EER	Line Set (Port) Size	MCA / MOCP	
UMAT18HP230V1AF	18K	17 / 11	1/4 x 1/2	1 / 15	Dedicated Power Supply Size Per Local Code
UMAT24HP230V1AF	24K	16 / 10.65	3/8 x 5/8	1 / 15	
UMAT30HP230V1AF	30K	17 / 10.44	3/8 x 5/8	2 / 15	
UMAT36HP230V1AF	36K	16 / 10.35	3/8 x 5/8	2 / 15	
UMAT42HP230V1AF	42K	16 / 9.75	3/8 x 5/8	2 / 15	
UMAT48HP230V1AF	48K	16 / 8.73	3/8 x 5/8	3 / 15	

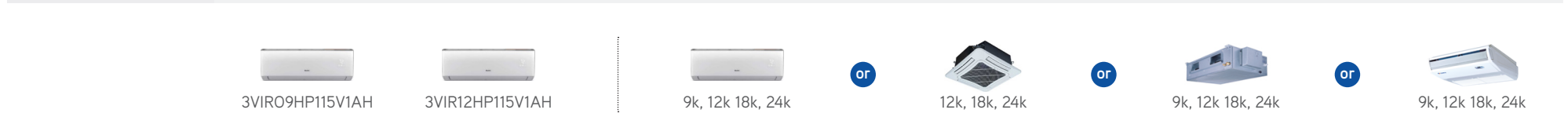
Slim-Duct, Medium Static	Nominal Capacity (Btu)	SEER / EER	Line Set (Port) Size	MCA / MOCP	E.S.P
UMAT18HP230V1AD	18K	16 / 11	1/4 x 1/2	1 / 15	0.12
UMAT24HP230V1AD	24K	16 / 10.65	3/8 x 5/8	2 / 15	0.3
UMAT30HP230V1AD	30K	16 / 8.55	3/8 x 5/8	2 / 15	0.3
UMAT36HP230V1AD	36K	16 / 10.35	3/8 x 5/8	3 / 15	0.4
UMAT42HP230V1AD	42K	16 / 9.5	3/8 x 5/8	3 / 15	0.4
UMAT48HP230V1AD	48K	16 / 9.3	3/8 x 5/8	5 / 15	0.5

Ceiling Cassette	Nominal Capacity (Btu)	SEER / EER	Line Set (Port) Size	Cassette Grilles Required for Operation	Measurements
UMAT18HP230V1AC	18K	16 / 10.05	1/4 x 1/2	UMAT18GRILLE	26 7/16 x 26 7/16 x 2
UMAT24HP230V1AC	24K	18 / 10.65	3/8 x 5/8	UMAT24GRILLE	37 1/2 x 37 1/2 x 2 7/16
UMAT30HP230V1AC	30K	20 / 10.4	3/8 x 5/8	UMAT30GRILLE	37 1/2 x 37 1/2 x 2 7/16
UMAT36HP230V1AC	36K	20 / 10.4	3/8 x 5/8	UMAT36GRILLE	37 1/2 x 37 1/2 x 2 7/16
UMAT42HP230V1AC	42K	16 / 8.95	3/8 x 5/8	UMAT42GRILLE	37 1/2 x 37 1/2 x 2 7/16
UMAT48HP230V1AC	48K	16 / 8.7	3/8 x 5/8	UMAT48GRILLE	41 x 41 x 2 5/8

SINGLE-ZONE SYSTEMS

	Indoor Model No.	Outdoor Model No.	Nominal Capacity (Btu)	SEER / EER	HSPF / COP	Cooling Range (°F)	Heating Range (°F)	MCA / MOCP	ENERGY STAR	Line Set (Port) Size	Max line length	Max Lift/ Drop OD to ID units	WiFi	
LIVO GEN3														
LIVO GEN3	115-1-60	LIVV09HP115V1AH	LIVV09HP115V1AO	9K	18 / 10.0	9 / 3.2	0 - 115	-4 - 75	17 / 25	NO	1/4 x 3/8	49'	33'	Built-In
		LIVV12HP115V1AH	LIVV12HP115V1AO	12K	18 / 10.0	9 / 3.05	0 - 115	-4 - 75	20 / 30	NO	1/4 x 3/8	98'	33'	Built-In
	208/230-1-60	LIVV09HP230V1AH	LIVV09HP230V1AO	9K	17 / 10.25	9 / 3.6	0 - 115	-4 - 75	10 / 15	NO	1/4 x 3/8	49'	33'	Built-In
		LIVV12HP230V1AH	LIVV12HP230V1AO	12K	17 / 9.25	9 / 3.25	0 - 115	-4 - 75	9 / 15	NO	1/4 x 3/8	66'	33'	Built-In
		LIVV18HP230V1AH	LIVV18HP230V1AO	18K	16 / 8.25	9 / 3	0 - 115	-4 - 75	15 / 20	NO	1/4 x 1/2	82'	33'	Built-In
		LIVV24HP230V1AH	LIVV24HP230V1AO	24K	19 / 11.25	10 / 3.4	0 - 115	-4 - 75	19 / 30	NO	1/4 x 5/8	82'	33'	Built-In
LIVV30HP230V1AH	LIVV30HP230V1AO	30K	18 / 10.55	9 / 3.3	-4 - 115	-13 - 75	24 / 35	NO	1/4 x 5/8	82'	33'	Built-In		
LIVV36HP230V1AH	LIVV36HP230V1AO	36K	18 / 9.21	9 / 2.8	-4 - 115	-13 - 75	24 / 35	NO	1/4 x 5/8	82'	33'	Built-In		

VIREO GEN3														
VIREO GEN3	115 -1-60	3VIR09HP115V1AH	3VIR09HP115V1AO	9K	26.5 / 14.55	11.2 / 4.1	-13 - 122	-22 - 86	18 / 25	YES	1/4 x 3/8	49'	33'	Built-In
		3VIR12HP115V1AH	3VIR12HP115V1AO	12K	25 / 13	11.5 / 3.61	-13 - 122	-22 - 86	21 / 30	YES	1/4 x 1/2	66'	33'	Built-In
	208/230-1-60	3VIR09HP230V1AH	3VIR09HP230V1AO	9K	25.3 / 14.7	11.2 / 3.75	-20 - 122	-22 - 86	9 / 15	YES	1/4 x 3/8	49'	33'	Built-In
		3VIR12HP230V1AH	3VIR12HP230V1AO	12K	25 / 13	11.5 / 3.61	-20 - 122	-22 - 86	10 / 15	YES	1/4 x 1/2	66'	33'	Built-In
		3VIR18HP230V1AH	3VIR18HP230V1AO	18K	25 / 13	11 / 3.65	-20 - 122	-22 - 86	15 / 20	YES	1/4 x 5/8	98'	66'	Built-In
		3VIR24HP230V1AH	3VIR24HP230V1AO	24K	25 / 13	11 / 3.81	-20 - 122	-22 - 86	16 / 25	YES	1/4 x 5/8	98'	66'	Built-In



ULTRA PRODUCT FOR EXTREME CONDITIONS & HIGH EFFICIENCY

VIREO+ ULTRA														
VIREO+ ULTRA	208/230-1-60	VIRU30HP230V1AH	VIRU30HP230V1AO	30K	23 / 11.2	10.5 / 3.11	0 - 115	-31 - 75	30 / 50	NO	1/4 x 5/8	165'	100'	Built-In
		VIRU36HP230V1AH	VIRU36HP230V1AO	36K	23 / 10.25	10.5 / 3.17	0 - 115	-31 - 75	32 / 50	NO	1/4 x 5/8	165'	100'	Built-In

SAPPHIRE														
SAPPHIRE	208/230-1-60	SAP09HP230V1AH	SAP09HP230V1AO	9K	38 / 16.67	15 / 4.47	0 - 129	-22 - 75	9 / 15	YES	1/4 x 1/2	49'	33'	Built-In
		SAP12HP230V1AH	SAP12HP230V1AO	12K	30.5 / 15.3	14 / 3.8	0 - 129	-22 - 75	9 / 15	YES	1/4 x 1/2	98'	49'	Built-In
		SAP18HP230V1AH	SAP18HP230V1AO	18K	24.5 / 13.54	12 / 3.52	0 - 129	-22 - 75	22 / 30	YES	1/4 x 5/8	131'	66'	Built-In
		SAP24HP230V1AH	SAP24HP230V1AO	24K	21.5 / 13	12 / 3.5	0 - 129	-22 - 75	22 / 35	YES	1/4 x 5/8	164'	98'	Built-In

Indoor Model No.	Outdoor Model No.	Nominal Capacity (Btu)	SEER / EER	HSPF / COP	Cooling Range (°F)	Heating Range (°F)	MCA / MOCP (INDOOR-NO HEATER)	MCA / MOCP (OUTDOOR)	ENERGY STAR	Line Set (Port) Size	Max line length	Max Lift/ Drop OD to ID units
FLEXX HP												
FLEXX24HP230V1BH	FLEXX36HP230V1AO	24K	20 / 12.5	10.5 / 4.2	5 - 129	-22 - 75	4 / 15	24 / 35	YES	3/8 x 3/4	100'	50'
FLEXX36HP230V1BH	FLEXX60HP230V1AO	36K	18 / 11	10 / 3.5	5 - 129	-22 - 75	4 / 15	24 / 35	NO	3/8 x 3/4	100'	50'
FLEXX48HP230V1BH	FLEXX60HP230V1AO	48K	18 / 11	10.5 / 3.6	5 - 129	-22 - 75	8 / 15	35 / 45	NO	3/8 x 3/4	100'	50'
FLEXX60HP230V1BH	FLEXX60HP230V1AO	60K	17 / 10.5	10 / 3.45	5 - 129	-22 - 75	8 / 15	35 / 45	NO	3/8 x 3/4	100'	50'
FLEXX24C	FLEXX36HP230V1AO	24K	18 / 12.5	10 / *	5 - 129	-22 - 75		24 / 35	NO	3/8 x 3/4	100'	50'
FLEXX36C	FLEXX36HP230V1AO	36K	17 / 10	9.5 / *	5 - 129	-22 - 75		24 / 35	NO	3/8 x 3/4	100'	50'
FLEXX48C	FLEXX60HP230V1AO	48K	17 / 11	10 / *	5 - 129	-22 - 75		35 / 45	NO	3/8 x 3/4	100'	50'
FLEXX60C	FLEXX60HP230V1AO	60K	16 / 10	9.5 / *	5 - 129	-22 - 75		35 / 45	NO	3/8 x 3/4	100'	50'

FLEXX AC												
FLEXX24HP230V1BH	FLEXX36AC230V1AO	24K	20 / 12.5		40 - 118		4 / 15	24 / 35	YES	3/8 x 3/4	100'	50'
FLEXX36HP230V1BH	FLEXX60AC230V1AO	36K	18 / 12.2		40 - 118		4 / 15	24 / 35	NO	3/8 x 3/4	100'	50'
FLEXX48HP230V1BH	FLEXX60AC230V1AO	48K	18 / 11.7		40 - 118		8 / 15	35 / 45	NO	3/8 x 3/4	100'	50'
FLEXX60HP230V1BH	FLEXX60AC230V1AO	60K	17 / 11.7		40 - 118		8 / 15	35 / 45	NO	3/8 x 3/4	100'	50'
FLEXX24C	FLEXX36AC230V1AO	24K	19.5 / 12.5		5 - 129			24 / 35	NO	3/8 x 3/4	100'	50'
FLEXX36C	FLEXX36AC230V1AO	36K	18 / 12.2		5 - 129			24 / 35	NO	3/8 x 3/4	100'	50'
FLEXX48C	FLEXX60AC230V1AO	48K	18 / 11.7		5 - 129			35 / 45	NO	3/8 x 3/4	100'	50'
FLEXX60C	FLEXX60AC230V1AO	60K	16 / 11.7		5 - 129			35 / 45	NO	3/8 x 3/4	100'	50'

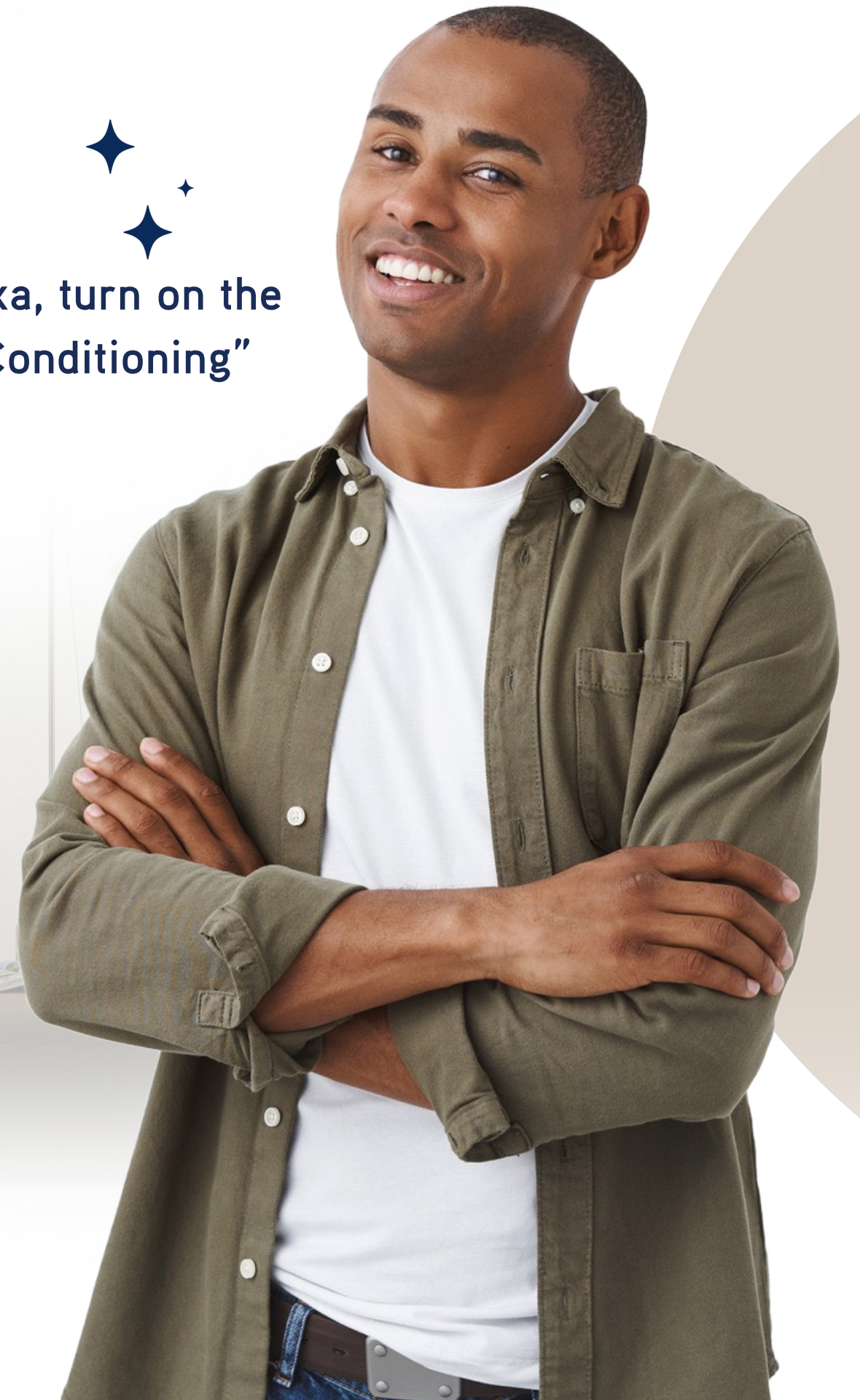


GET SMART WITH GREE

- ✔ Convenience and Comfort
- ✔ Voice Control
- ✔ Smart Home Integration



“Alexa, turn on the
Air Conditioning”



MULTI-ZONE APPLICATIONS & BENEFITS



MULTI21+

IT ALL FITS TOGETHER FOR COMFORT



22 SEER MULTI-ZONE SYSTEM IS HERE.

The highly versatile Multi21+ systems, featuring GREE's G10 inverter-driven compressor and eco-friendly R410A refrigerant, are among the most innovative ductless split heat pumps available today. Our advanced G10 Inverter technology gives you maximum efficiency to reduce your energy consumption.

- HIGH EFFICIENCY, 22 SEER / 11.5 HSPF
- ONLY 1 UNIT REQUIRED FOR INITIAL START-UP
- 5 OPTIONS FOR INDOOR UNIT
- IDEAL FOR RESIDENTIAL AND COMMERCIAL SPACES

- G10 inverter technology
- High efficiency, up to 22 SEER / 11.5 HSPF
- Sound levels down to 56 dB(A) on outdoor unit
- Cooling range: 0°F - 118°F
- Heating range: -4°F - 75°F
- Self-diagnosis
- Multiple fan speeds
- Swing louver control
- Washable, polymeric air filters
- Remote & wired controller options
- Automatic voltage adaption

MULTI 21+	MULTI18HP230V1C	MULTI24HP230V1C	MULTI30HP230V1C	MULTI36HP230V1C	MULTI42HP230V1C
SYSTEM PERFORMANCE (Non-Ducted Indoor Units)					
System Type	HEAT PUMP				
Number of Zones	1 - 2	1 - 3	1 - 4	1 - 5	1 - 5
Cooling Capacity (Min-Max)	Btu/h 18000 (6998 - 21001)	24000 (7500 - 33000)	28400 (8189 - 33438)	34000 (8871 - 35826)	38999 (8871 - 40944)
Heating Capacity (Min-Max)	Btu/h 19000 (7000 - 22600)	26000 (7500 - 27978)	30000 (8189 - 32414)	42500 (8871 - 44356)	45004 (8871 - 46062)
SEER / EER	22 / 12.5	21 / 12.5	21 / 12.5	21 / 12.5	21 / 10.4
HSPF / COP	11 / 3.7	11 / 3.7	11 / 3.7	11.5 / 3.7	10.2 / 3.6
Energy Star®	YES				NO
SYSTEM PERFORMANCE (Ducted Indoor Units)					
Cooling Capacity (Min-Max)	Btu/h 18000 (6998 - 21001)	24000 (7500 - 33000)	28400 (8189 - 33438)	34000 (8871 - 35826)	38999 (8871 - 40944)
Heating Capacity (Min-Max)	Btu/h 19000 (7000 - 22600)	26000 (7500 - 27978)	30000 (8189 - 32414)	42500 (8871 - 44356)	45004 (8871 - 46062)
SEER / EER	16 / 11.5	16 / 10.5	16 / 10.5	16 / 11.5	14.7 / 9.8
HSPF / COP	8.5 / 3.1	8.5 / 3.2	8.5 / 3.3	8.5 / 3	8.5 / 3
Energy Star®	NO				
OUTDOOR UNIT					
Cooling Temperature Range	°F 0 - 118	0 - 118	0 - 118	0 - 118	0 - 118
Heating Temperature Range	°F -4 - 75	-4 - 75	-4 - 75	-4 - 75	-4 - 75
Compressor Type	GREE G-10 / 2 - STAGE INVERTER				
Sound Pressure Level (Cooling / Heating)	dB(A) 53 / 58	59 / 60	61 / 60	59 / 62	62 / 60
Unit Dimension (WxHxD)	in 37 5/8 x 27 5/8 x 15 5/8	38 5/8 x 31 1/8 x 16 13/16	38 5/8 x 31 1/8 x 16 13/16	42 13/16 x 43 7/16 x 17 5/16	42 13/16 x 43 7/16 x 17 5/16
Package Dimension (WxHxD)	in 40 7/16 x 28 7/8 x 17 7/8	42 1/2 x 33 1/8 x 19 1/8	42 1/2 x 33 1/8 x 19 1/8	45 1/2 x 45 1/2 x 18 7/8	45 1/2 x 45 1/2 x 18 7/8
Weight (Net / Gross)	lbs 114.6 / 124.6	153.2 / 164.2	154.32 / 169.8	198.4 / 216.1	198.4 / 216.1
Refrigerant Charge - R410A	oz 56.4	77.6	98.8	128.8	128.8
Coil Type	Aluminum Fin-Copper Tube / Acrylic Resin Protection				
REFRIGERANT PIPING					
Port Size (Liquid - Gas)	Port A (in)	1/4 - 3/8	1/4 - 3/8	1/4 - 3/8	1/4 - 3/8
	Port B (in)	1/4 - 3/8	1/4 - 3/8	1/4 - 3/8	1/4 - 3/8
	Port C (in)		1/4 - 3/8	1/4 - 3/8	1/4 - 3/8
	Port D (in)			1/4 - 3/8	1/4 - 3/8
	Port E (in)				1/4 - 3/8
Pre-Charge Length	ft 33	98	131	131	131
Pipe Length (Min / Max)	ft 10 / 65	10 / 197	10 / 230	10 / 246	10 / 246
Pipe Length to furthest Indoor Unit	ft 33	65	82	82	82
Max. Pipe Elevation	ft 33	33	49	49	49
ELECTRICAL					
Power Supply	208-230V / 1Ph / 60Hz				
Rated Current Cooling	amps 12.4	15.9	16.8	16.8	25
Rated Current Heating	amps 12.4	15.9	16.8	16.8	25
MCA	amps 16	23	20	23	24
MOCP	amps 25	30	30	35	40
Main Power Wire Size	AWG Per Local Code				
Interconnecting Wire Size	AWG 14 / 4				
LIMITED WARRANTY	5 Years Parts, 7 Years Compressor - Residential & Commercial				

MULTI+ULTRA

ULTRA HEATING & COOLING POWER



- HIGH EFFICIENCY, UP TO 23 SEER / 10.5 HSPF
- IDEAL FOR HARSH CLIMATES: -31°F - 118°F
- CONNECT UP TO 5 INDOOR UNITS (ZONES) TO OUTDOOR SYSTEM
- 5 OPTIONS FOR INDOOR UNIT

OPTIMAL PERFORMANCE IN THE MOST CHALLENGING CLIMATES... -31°F - 118°F.

The Multi ULTRA heat pump units provide ULTRA heating & cooling powered by the “unique to GREE” 2 stage / 3 cylinder variable speed compressor. Each outdoor coil has corrosion-resistant, acrylic resin coil coating to maintain energy efficiency in the harshest climates.

- Sound levels down to 56 dB(A) on outdoor unit
- Up to 5 indoor units
- Cooling range: 0°F - 118°F
- Heating range: -31°F - 75°F

MULTI+ ULTRA	MULTIU18HP230V1D	MULTIU24HP230V1D	MULTIU36HP230V1D	MULTIU42HP230V1D
SYSTEM PERFORMANCE (Non-Ducted Indoor Units)				
System Type	HEAT PUMP			
Number of Zones	2	2 - 3	2 - 4	2 - 5
Cooling Capacity (Min-Max)	Btu/h 18000 (6998 - 21001)	22000 (7500 - 30000)	36000 (8871 - 40000)	42000 (8871 - 42991)
Heating Capacity (Min-Max)	Btu/h 21000 (7000 - 26000)	26000 (7500 - 31000)	36000 (8871 - 42514)	42000 (8871 - 46062)
SEER / EER	23 / 12.5	23 / 12.5	23 / 9	23 / 9
HSPF / COP	10.5 / 3.6	10.5 / 3.6	10 / 3.2	10 / 3.4
Energy Star®	YES	YES	NO	NO
SYSTEM PERFORMANCE (Ducted Indoor Units)				
Cooling Capacity (Min-Max)	Btu/h 18000 (6998 - 21001)	22000 (7500 - 30000)	36000 (8871 - 40000)	42000 (8871 - 42991)
Heating Capacity (Min-Max)	Btu/h 21000 (7000 - 26000)	26000 (7500 - 31000)	36000 (8871 - 42514)	42000 (8871 - 46062)
SEER / EER	14 / 8.5	14 / 8.5	14 / 7.5	14 / 7.5
HSPF / COP	9 / 3.6	9 / 3.6	9 / 3.2	9 / 3.4
Energy Star®	NO			
OUTDOOR UNIT				
Cooling Temperature Range	°F 0 - 118	0 - 118	0 - 118	0 - 118
Heating Temperature Range	°F -31 - 75	-31 - 75	-31 - 75	-31 - 75
Compressor Type	GREE G-10 / 2 - STAGE INVERTER			
Sound Pressure Level (Cooling / Heating)	dB(A) 58 / 58	60 / 60	62 / 62	62 / 62
Unit Dimension (WxHxD)	in 37 5/8 x 27 5/8 x 15 5/8	38 5/8 x 31 1/8 x 16 13/16	42 13/16 x 43 7/16 x 17 5/16	42 13/16 x 43 7/16 x 17 5/16
Package Dimension (WxHxD)	in 40 7/16 x 28 7/8 x 17 7/8	42 1/2 x 33 1/8 x 19 1/8	45 1/2 x 45 1/2 x 18 7/8	45 1/2 x 45 1/2 x 18 7/8
Weight (Net / Gross)	lbs 78 / 183	174 / 185	280 / 298	282 / 291
Refrigerant Charge - R410A	oz 77.6	95.2	158.7	176.3
Coil Type	Aluminum Fin-Copper Tube / Acrylic Resin Protection			
REFRIGERANT PIPING				
Port A (in)	1/4 - 3/8	1/4 - 3/8	1/4 - 3/8	1/4 - 3/8
Port B (in)	1/4 - 3/8	1/4 - 3/8	1/4 - 3/8	1/4 - 3/8
Port C (in)	1/4 - 3/8	1/4 - 3/8	1/4 - 3/8	1/4 - 3/8
Port D (in)	1/4 - 3/8	1/4 - 3/8	1/4 - 3/8	1/4 - 3/8
Port E (in)	1/4 - 3/8	1/4 - 3/8	1/4 - 3/8	1/4 - 3/8
Pre-Charge Length	ft 66	98	131	131
Pipe Length (Min / Max)	ft 10 / 164	10 / 230	10 / 246	10 / 246
Pipe Length to furthest Indoor Unit	ft 82			
Max. Pipe Elevation	ft 26	49	49	49
ELECTRICAL				
Power Supply	208-230V / 1Ph / 60Hz			
Rated Current Cooling	amps 22	26	32	32
Rated Current Heating	amps 22	26	32	32
MCA	amps 20	23	36	38
MOCP	amps 35	40	60	60
Main Power Wire Size	AWG Per Local Code			
Interconnecting Wire Size	AWG 14 / 4			
LIMITED WARRANTY	5 Years Parts, 7 Years Compressor – Residential & Commercial			

WALL MOUNTS



The Sapphire, the smart ductless wall mount unit. Slim compact design hangs inconspicuously on the wall and mixes with most interior designs. Built-in Universal technology WIFI allows control from any smartphone with the GREE+ smart app.



- Built-in WIFI
- Smartphone interface
- Quiet down to 19 dB(A)
- Multiple fan speeds
- Precise airflow control
- Swing louver control
- I-Feel function



The Vireo GEN3 ductless wall mount has a compact design that blends well with any decor, the perfect option for your home or office needs.



- Multiple fan speeds
- Auto Clean function
- Swing louver control
- Precise airflow control
- Built-in WIFI
- Automatic voltage adaption
- I-Feel function
- Remote & wired controller options



The Livo GEN3 ductless wall mount has a compact design, for quiet comfort and attractive appearance. You can count on consistent comfort from the Livo GEN3.



- Multiple fan speeds
- Auto Clean function
- Swing louver control
- LED display settings
- Sleep function
- Built-in WIFI
- Timer function
- Privacy lock mode
- Remote & wired controller options

SAPPHIRE WALL MOUNT

MODEL		SAP09HP230V1AH	SAP12HP230V1AH	SAP18HP230V1AH	SAP24HP230V1AH
System Type		HEAT PUMP			
Cooling Capacity - Nominal	Btu/h	9000	12000	18000	22000
Heating Capacity - Nominal	Btu/h	9000	12200	18000	24000
Energy Star®		Check Outdoor Unit Match-ups for Energy Star Qualification			
Air Flow (Min-Max)	CFM	206 - 424	235 - 500	353 - 736	383 - 824
Sound Pressure Level (Cooling / Heating)	dB(A)	19 - 46 / 19 - 46	22 - 49 / 22 - 49	34 - 51 / 34 - 51	27 - 54 / 37 - 55
Dehumidification	pt/hr	1.69	2.96	3.8	4.23
Condensate Drain Size	in	5/8	5/8	5/8	5/8
Unit Dimension (WxHxD)	in	39 7/8 x 12 1/8 x 8 3/4	39 7/8 x 12 1/8 x 8 3/4	44 3/16 x 13 x 9 13/16	44 3/16 x 13 x 9 13/16
Package Dimension (WxHxD)	in	42 7/16 x 14 13/16 x 11 13/16	42 7/16 x 14 13/16 x 11 13/16	46 7/8 x 16 x 13 3/16	46 7/8 x 16 x 13 3/16
Weight (Net / Gross)	lbs	29.8 / 36.4	29.8 / 36.4	36.4 / 44.1	35.3 / 41.9
Line Set Size (Liquid - Gas)	in	1/4 - 1/2	1/4 - 1/2	1/4 - 5/8	1/4 - 5/8
Power Supply		208-230V / 1Ph / 60Hz (Powered by the Outdoor Unit)			
LIMITED WARRANTY		5 Years Parts, 7 Years Compressor - Residential & Commercial			

VIREO GEN3 WALL MOUNT

MODEL		3VIR09HP230V1AH	3VIR12HP230V1AH	3VIR18HP230V1AH	3VIR24HP230V1AH
System Type		HEAT PUMP			
Cooling Capacity - Nominal	Btu/h	9100	12000	18000	22000
Heating Capacity - Nominal	Btu/h	11000	12000	18200	24000
Energy Star®		Check Outdoor Unit Match-ups for Energy Star Qualification			
Air Flow (Min-Max)	CFM	194 - 353	230 - 400	353 - 618	400 - 824
Sound Pressure Level (Min-Max)	dB(A)	25 - 40	27 - 43	31 - 46	35 - 53
Dehumidification	pt/hr	1.70	3	3.8	5.1
Condensate Drain Size (OD)	in	5 / 8	5 / 8	5 / 8	5 / 8
Unit Dimension (WxHxD)	in	32 1/2 x 11 1/2 x 7 3/4	32 1/2 x 11 1/2 x 7 3/4	38 5/8 x 12 1/4 x 8 3/4	42 5/8 x 13 1/8 x 9 3/4
Package Dimension (WxHxD)	in	34 1/4 x 13 3/4 x 10 1/8	34 1/4 x 13 3/4 x 10 1/8	40 7/8 x 14 7/8 x 11 5/16	44 7/16 x 16 x 12 3/4
Weight (Net / Gross)	lbs	21 / 25.4	21 / 25.4	30 / 35.3	35.3 / 42
Line Set Size (Liquid - Gas)	in	1/4 - 3/8	1/4 - 1/2	1/4 - 5/8	1/4 - 5/8
Power Supply		208-230V / 1Ph / 60Hz (Powered by the Outdoor Unit)			
LIMITED WARRANTY		5 Years Parts, 7 Years Compressor - Residential & Commercial			

LIVO GEN3 WALL MOUNT

MODEL		LIVV09HP230V1AH	LIVV12HP230V1AH	LIVV18HP230V1AH	LIVV24HP230V1AH
System Type		HEAT PUMP			
Cooling Capacity - Nominal	Btu/h	9100	12000	17400	22000
Heating Capacity - Nominal	Btu/h	9500	13000	18000	24000
Energy Star®		Check Outdoor Unit Match-ups for Energy Star Qualification			
Air Flow (Min-Max)	CFM	182 - 294	182 - 371	335 - 471	412 - 677
Sound Pressure Level (Cooling / Heating)	dB(A)	26 - 39 / 29 - 41	28 - 42 / 30 - 43	35 - 47 / 35 - 46	37 - 49 / 36 - 47
Dehumidification	pt/hr	1.69	2.96	3.8	4.23
Condensate Drain Size	in	5/8	5/8	5/8	5/8
Unit Dimension (WxHxD)	in	31 1/8 x 10 3/4 x 7 7/8	33 1/4 x 11 1/4 x 8 3/8	38 1/8 x 11 3/4 x 8 3/4	42 1/4 x 12 3/4 x 9 5/8
Package Dimension (WxHxD)	in	33 1/2 x 13 15/16 x 10 3/4	36 1/4 x 14 15/16 x 11	41 x 15 1/8 x 12 5/8	44 3/8 x 16 x 13 3/8
Weight (Net / Gross)	lbs	19.8 / 24.3	22 / 26.5	29.8 / 36.4	37.5 / 45.2
Line Set Size (Liquid - Gas)	in	1/4 - 3/8	1/4 - 3/8	1/4 - 1/2	1/4 - 5/8
Power Supply		208-230V / 1Ph / 60Hz (Powered by the Outdoor Unit)			
LIMITED WARRANTY		5 Years Parts, 7 Years Compressor - Residential & Commercial			

INDOOR UNIT OPTIONS FOR ALL MULTI-ZONE SYSTEMS CEILING CASSETTE & FLOOR/CEILING

CEILING CASSETTE

GREE's ceiling cassette will inconspicuously provide quiet performance through innovative design. The ceiling cassette is suitable for any room and can be easily installed in a suspended ceiling with only a discreet decorative discharge grille visible.



- 4-Way discharge air
- Multiple fan speeds
- Swing louver control
- Automatic voltage adaption
- Internal condensate drain pump
- Sentry float switch
- Decorative discharge air grille (sold separately)
- Remote & wired controller options

UNIVERSAL FLOOR/CEILING

Our universal floor/ceiling indoor units are designed to be suspended from a ceiling or mounted low on a wall. The slender and lightweight design is perfect for restaurants or hallways where wall space is limited.



- 4-Way discharge air
- Multiple fan speeds
- Sleep function
- Swing louver control
- Washable, polymeric air filters
- Privacy lock mode
- Automatic voltage adaption
- Remote & wired controller options

MINI FLOOR CONSOLE

Gree's Mini Console indoor units are aesthetically pleasing and the perfect size for any room. It can be mounted as low as six inches above the floor and has front panel access to the filter for ease of cleaning.



- 4-Way discharge air
- Multiple fan speeds
- Comfortable sleep mode
- Swing louver
- Cleanable air filter
- Dry coil mode for anti-mildew protection
- IR remote control included

CEILING CASSETTE

MODEL		CAS12HP230V1BC	CAS18HP230V1BC	CAS24HP230V1BC
System Type		HEAT PUMP		
Cooling Capacity - Nominal	Btu/h	12000	18000	22000
Heating Capacity - Nominal	Btu/h	12000	18200	24000
Energy Star®		Check Outdoor Unit Match-ups for Energy Star Qualification		
Air Flow (Min-Max)	CFM	265 - 383	265 - 418	518 - 753
Sound Pressure Level	dB(A)	34 - 44	35 - 47	36 - 47
Dehumidification	pt/hr	2.96	3.80	5.3
Condensate Drain Size (OD)	in	1	1	1
Unit Dimension (WxHxD)	in	23 1/2 x 9 1/2 x 23 1/2	23 1/2 x 9 1/2 x 23 1/2	33 x 9 1/2 x 33
Package Dimension (WxHxD)	in	30 1/2 x 11 1/4 x 29	30 1/2 x 11 1/4 x 29	37 1/2 x 12 1/8 x 37 1/2
Weight (Net / Gross)	lbs	44 / 53	44 / 53	57.3 / 70.5
Line Set Size (Liquid - Gas)	in	1/4 - 3/8	1/4 - 1/2	3/8 - 5/8
Power Supply		208-230V / 1Ph / 60Hz (Powered by the Outdoor Unit)		
LIMITED WARRANTY		5 Years Parts, 7 Years Compressor - Residential & Commercial		
CASSETTE GRILLE (Required)		CASGRILLEBSM	CASGRILLEBSM	CASGRILLEBLG
Grille Dimension (WxHxD)	in	26 3/8 x 2 x 26 3/8	26 3/8 x 2 x 26 3/8	37 7/16 x 2 3/8 x 37 7/16
Package Dimension (WxHxD)	in	30 X 3 1/2 X 30	30 X 3 1/2 X 30	40 1/2 x 4 5/8 x 40 3/4
Weight (Net / Gross)	lbs	7.7 / 11	7.7 / 11	15.4 / 24.25

UNIVERSAL FLOOR/CEILING

MODEL		FLR09HP230V1BF	FLR12HP230V1BF	FLR18HP230V1BF	FLR24HP230V1BF
System Type		HEAT PUMP			
Cooling Capacity - Nominal	Btu/h	9100	12000	18000	22000
Heating Capacity - Nominal	Btu/h	11000	12000	18200	24000
Energy Star®		Check Outdoor Unit Match-ups for Energy Star Qualification			
Air Flow (Min-Max)	CFM	257 - 412	257 - 412	241 - 400	424 - 560
Sound Pressure Level (Min-Max)	dB(A)	26 - 38	26 - 38	27 - 38	27 - 38
Dehumidification	pt/hr	1.7	3	3.8	5.3
Condensate Drain Size	in	11/16	11/16	11/16	11/16
Unit Dimension (WxHxD)	in	34 1/4 x 26 1/4 x 9 1/4	34 1/4 x 26 1/4 x 9 1/4	34 1/4 x 26 1/4 x 9 1/4	47 1/4 x 26 1/4 x 9 1/4
Package Dimension (WxHxD)	in	40 1/2 x 30 1/4 x 11 1/4	40 1/2 x 30 1/4 x 11 1/4	40 1/2 x 30 1/4 x 11 1/4	53 1/2 x 30 1/4 x 11 1/4
Weight (Net / Gross)	lbs	55 / 66.2	55 / 66.2	66.3 / 67.3	72.8 / 88.2
Line Set Size (Liquid - Gas)	in	1/4 - 3/8	1/4 - 1/2	1/4 - 1/2	3/8 - 5/8
Power Supply		208-230V / 1Ph / 60Hz (Powered by the Outdoor Unit)			
LIMITED WARRANTY		5 Years Parts, 7 Years Compressor - Residential & Commercial			

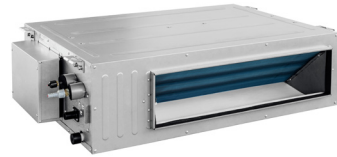
MINI FLOOR CONSOLE

MODEL		CONS09HP230V1AF	CONS12HP230V1AF	CONS18HP230V1AF
System Type		HEAT PUMP		
Cooling Capacity - Nominal	Btu/h	9000	12000	18000
Heating Capacity - Nominal	Btu/h	9500	13000	19800
Energy Star®		Check Outdoor Unit Match-ups for Energy Star Qualification		
Air Flow (Min-Max)	CFM	188 - 383	206 - 441	241 - 494
Sound Pressure Level	dB(A)	25 - 40	27 - 43	33 - 48
Dehumidification	pt/hr	1.69	2.96	3.8
Condensate Drain Size	in	1 1/8	1 1/8	1 1/8
Unit Dimension (WxHxD)	in	27 9/16 x 23 5/8 x 8 1/2	27 9/16 x 23 5/8 x 8 1/2	27 9/16 x 23 5/8 x 8 1/2
Package Dimension (WxHxD)	in	31 x 27 3/8 x 11 1/8	31 x 27 3/8 x 11 1/8	31 x 27 3/8 x 11 1/8
Weight (Net / Gross)	lbs	33 / 39.7	33 / 39.7	33 / 39.7
Line Set Size (Liquid - Gas)	in	1/4 - 3/8	1/4 - 3/8	1/4 - 1/2
Power Supply		208-230V / 1Ph / 60Hz (Powered by the Outdoor Unit)		
LIMITED WARRANTY		5 Years Parts, 7 Years Compressor - Residential & Commercial		

INDOOR UNIT OPTIONS FOR ALL MULTI-ZONE SYSTEMS SLIM DUCT

SLIM DUCT

Compact and powerful, the high static slim duct offers the ultimate in flexibility and discretion. Concealed above a suspended ceiling or within open closet spaces to deliver conditioned air via extended ducting and suitable ceiling or wall grilles.



- High static pressure capability
- Slim line construction
- Outside air capability
- Cleanable air filter
- Internal condensate pump
- Sentry float switch
- Remote & wired controller options
- I-Feel function

MODEL	DUCT09HP230V1BD	DUCT12HP230V1BD	DUCT18HP230V1BD	DUCT24HP230V1BD	
System Type	HEAT PUMP				
Cooling Capacity - Nominal	Btu/h	9000	12000	18000	24000
Heating Capacity - Nominal	Btu/h	9500	13000	19000	27000
Energy Star®	NO				
Air Flow (Min-Max)	CFM	188 - 354	212 / 353	288 / 589	406 / 736
External Static Pressure	In W.c.	0.6	0.6	0.8	0.8
Sound Pressure Level	dB(A)	25 - 36	26 - 38	26 - 39	28 - 42
Dehumidification	pt/hr	1.69	2.96	3.8	5.28
Condensate Drain Size	in	1 1/8	1 1/8	1 1/8	1 1/8
Unit Dimension (WxHxD)	in	32 3/4 x 11 7/8 x 29 3/4	32 3/4 x 11 7/8 x 29 3/4	44 1/2 x 11 7/8 x 29 3/4	44 1/2 x 11 7/8 x 29 3/4
Package Dimension (WxHxD)	in	35 1/4 x 13 5/8 x 31 3/4	35 1/4 x 13 5/8 x 31 3/4	47 5/16 x 13 5/8 x 32	47 5/16 x 13 5/8 x 32
Weight (Net / Gross)	lbs	70.5 / 83.8	70.5 / 83.8	92.6 / 107	92.6 / 107
Line Set Size (Liquid - Gas)	in	1/4 - 3/8	1/4 - 1/2	3/8 - 5/8	3/8 - 5/8
Power Supply	208-230V / 1Ph / 60Hz (Powered by the Outdoor Unit)				
LIMITED WARRANTY	5 Years Parts, 7 Years Compressor - Residential & Commercial				

RATED COMBINATIONS

MODEL NUMBER	ONE UNIT	TWO UNITS	THREE UNITS	FOUR UNITS	FIVE UNITS
MULTI18HP230V1CO MULTIU18HP230V1DO¹	9 12	9+9 9+12 12+12			
MULTI24HP230V1CO MULTIU24HP230V1DO¹	ABOVE SIZES PLUS: 18	ABOVE SIZES PLUS: 9+18 12+18 18+18	9+9+9 9+9+12 9+9+18 9+12+12		
MULTI30HP230V1CO	ABOVE SIZES PLUS: 24	ABOVE SIZES PLUS: 9+24 12+24 18+24	ABOVE SIZES PLUS: 9+9+24 9+12+18 12+12+18	9+9+9+9 9+9+9+12 9+9+9+18	
MULTI36HP230V1CO MULTIU36HP230V1DO¹	ABOVE SIZES:	ABOVE SIZES PLUS: 9+24 12+24 18+24 24+24	ABOVE SIZES PLUS: 9+9+24 9+12+24 9+18+18 9+18+24 12+12+24 12+18+18 12+18+24 18+18+18	ABOVE SIZES PLUS: 9+9+9+24 9+9+12+18 9+9+12+24 9+9+18+18 9+12+12+12 9+12+12+18 12+12+12+18	MULTIU36 cannot be installed with 5 Units (4 Units is maximum)
MULTI42HP230V1CO MULTIU42HP230V1DO¹	ABOVE SIZES:	ABOVE SIZES:	ABOVE SIZES PLUS: 9+24+24 12+24+24 18+18+24	ABOVE SIZES PLUS: 9+9+18+24 9+12+12+24 9+12+18+18 9+12+18+24 9+18+18+18 9+12+12+24 12+12+18+18	ABOVE SIZES PLUS: 9+9+9+24 9+9+9+12+18 9+9+9+12+24 9+9+9+18+18 9+9+12+12+12 9+9+12+12+18 9+12+12+12+12 9+12+12+12+18 12+12+12+12+12



CONTROLS & ACCESSORIES

QUICK REFERENCE GUIDE

REMOTE CONTROLLERS

CONTROLLER	COMPATIBLE WITH	MODEL NUMBER	PART NUMBER	KEYPAD FEATURES & FUNCTIONS														
				POWER (ON/OFF)	MODE (+/-)	CLOCK	I-FEEL	WIFI	TIMER (ON/OFF)	FAN	TURBO	X-FAN	LIGHT	TEMP	QUIET	SLEEP	FRESH AIR	
	SINGLE-ZONE VIREO GEN3	YAP7F1F	305001060106	✓	✓	✓	✓		✓	✓	✓	✓	✓	✓		✓		
	SINGLE-ZONE LIVO	YAN1F1F	30510475	✓	✓		✓	✓	✓	✓	✓						✓	
	LIVO+ LIVO GEN3	YAN1F10F	305001060022	✓	✓	✓	✓	✓	✓	✓	✓						✓	
	VIREO VIREO+ VIREO+ ULTRA	YAN1F6F	305001000085	✓	✓	✓	✓	✓	✓	✓	✓						✓	
	SINGLE-ZONE SAPPHIRE	YAG1FB2	30510138	✓	✓		✓	✓	✓	✓	✓	✓	✓				✓	
	MULTI-ZONE CEILING CASSETTE	YT1F	305100491	✓	✓		✓	✓	✓	✓	✓					✓	✓	✓
	UNIVERSAL FLOOR / CEILING																	
	SLIM DUCT A																	
	SLIM DUCT B MINI FLOOR CONSOLE																	
	U-MATCH & U-MATCH+ CEILING CASSETTE	YB1FA	30510516	✓	✓		✓	✓	✓	✓	✓					✓	✓	
	UNIVERSAL FLOOR / CEILING SLIM DUCT																	
	ETAC & ETAC II, 26TTW REMOTE ONLY	YX1FF	30510092MX	✓	✓		✓	✓					✓					✓
	ETAC & ETAC II, REMOTE & RECEIVER		ETACREMOOTEKITB For ETAC & ETAC II	✓	✓		✓	✓					✓					✓

WIRED CONTROLLERS

CONTROLLER	COMPATIBLE WITH	MODEL NUMBER	PART NUMBER	KEYPAD FEATURES & FUNCTIONS															
				ENTER / CANCEL	FUNCTION	FAN	TIMER	MODE (+/-)	POWER (ON/OFF)	SWING	MENU/OK	IR RECEIVER	WIFI						
	SINGLE & MULTI-ZONE LIVO SERIES VIREO SERIES SAPPHIRE CEILING CASSETTE UNIVERSAL FLOOR / CEILING SLIM DUCT	XE71	MC20700970	✓	✓	✓			✓	✓	✓							✓	
	SINGLE & MULTI-ZONE LIVO SERIES VIREO SERIES SAPPHIRE CEILING CASSETTE UNIVERSAL FLOOR / CEILING SLIM DUCT	XK76	MC20700360	✓	✓	✓			✓	✓	✓							✓	✓
	U-MATCH & U-MATCH+ CEILING CASSETTE UNIVERSAL FLOOR / CEILING SLIM DUCT	XK60	MC20700550	✓	✓	✓	✓		✓	✓								✓	
	MULTI-ZONE CEILING CASSETTE UNIVERSAL FLOOR / CEILING SLIM DUCT	XK19	MC20700140	✓	✓	✓			✓	✓	✓							✓	
	WIFI CONTROLLER CEILING CASSETTE UNIVERSAL FLOOR / CEILING SLIM DUCT	XE72	MC20701210	✓	✓	✓			✓	✓	✓							✓	✓
	24 VOLT ADAPTER WALL MOUNT CEILING CASSETTE FLOOR/CEILING SLIM DUCT A / SLIM DUCT B	ME34	ME34-44G																

Transfer the control signal of any third party 24VAC thermostat to the control signal of a GREE mini-split unit: cassette, slim duct, floor/ceiling and so on to provide 24VAC control.

MULTI-ZONE QUICK REFERENCE GUIDE

OUTDOOR UNITS												
Outdoor Model No.	Nominal Capacity (Btu)	Zones	SEER / EER	HSPF / COP	Cooling Range (°F)	Heating Range (°F)	Initial Unit Charge	Max Pipe length	Max length to indoor unit	Max Lift/Drop OD to ID units	MCA / MCOP	Min AWG
MULTI 21+ (Non-Ducted Values - Check AHRI for Ducted and Mixed Ducted Values)												
MULTI18HP230V1CO	18K	1-2	22 / 12.5	11 / 3.7	0 - 118	-5 - 75	33'	65'	33'	33'	16 / 25	14
MULTI24HP230V1CO	24K	1-3	21 / 12.5	11 / 3.7	0 - 118	-5 - 75	98'	197'	65'	33'	23 / 30	12
MULTI30HP230V1CO	30K	1-4	21 / 12.5	11.5 / 3.7	0 - 118	-5 - 86	131'	230'	82'	49'	20 / 30	10
MULTI36HP230V1CO	36K	1-5	21 / 12.5	11.5 / 3.7	0 - 118	-5 - 86	131'	246'	82'	49'	23 / 35	10
MULTI42HP230V1CO	42K	1-5	21 / 10.4	10.2 / 3.6	0 - 118	-5 - 86	131'	246'	82'	49'	24 / 40	10
SUPER+ MULTI ULTRA FOR EXTREME CONDITIONS & HIGH EFFICIENCY (Non-Ducted Values - Check AHRI for Ducted and Mixed Ducted Values)												
MULTI48HP230V1AO	48K	2-8	16 / 9.6	8 / 3.6	5 - 118	-4 - 75	98'	443'	230'	98'	30 / 50	8
MULTI56HP230V1AO	56K	2-9	16 / 9.5	8.2 / 3.5	5 - 118	-4 - 75	98'	476'	230'	98'	30 / 50	8
MULTI+ ULTRA FOR EXTREME CONDITIONS & HIGH EFFICIENCY (Non-Ducted Values - Check AHRI for Ducted and Mixed Ducted Values)												
MULTIU18HP230V1DO	18K	2	23 / 12.5	10.5 / 3.6	0 - 115	-31 - 75	66'	164'	82'	33'	20 / 35	10
MULTIU24HP230V1DO	24K	2-3	23 / 12.5	10.5 / 3.7	0 - 115	-31 - 75	98'	230'	82'	33'	23 / 40	10
MULTIU36HP230V1DO	36K	2-4	23 / 9	10 / 3.3	0 - 115	-31 - 75	131'	246'	82'	49'	36 / 60	8
MULTIU42HP230V1DO	42K	2-5	23 / 9	10 / 3.4	0 - 115	-31 - 75	131'	262'	82'	49'	38 / 60	8

INDOOR UNITS												
Indoor Model No.	Nominal Capacity (Btu)	Line Set (Port) Size	Indoor Model No.	Nominal Capacity (Btu)	Line Set (Port) Size	Indoor Model No.	Nominal Capacity (Btu)	Line Set (Port) Size	Indoor Model No.	Nominal Capacity (Btu)	Line Set (Port) Size	E.S.P
LIVO GEN3 ¹			SAPPHIRE			UNIVERSAL FLOOR/CEILING			SLIM DUCT			
LIVV09HP230V1AH	9K	1/4 x 3/8	SAP09HP230V1AH	9K	1/4 x 1/2	FLR09HP230V1BF	9K	1/4 x 3/8	DUCT09HP230V1BD	9K	1/4 x 3/8	0.6
LIVV12HP230V1AH	12K	1/4 x 3/8	SAP12HP230V1AH	12K	1/4 x 1/2	FLR12HP230V1BF	12K	1/4 x 1/2	DUCT12HP230V1BD	12K	1/4 x 1/2	0.6
LIVV18HP230V1AH	18K	1/4 x 1/2	SAP18HP230V1AH	18K	1/4 x 5/8	FLR18HP230V1BF	18K	1/4 x 1/2	DUCT18HP230V1BD	18K	3/8 x 5/8	0.8
LIVV24HP230V1AH	24K	1/4 x 5/8	SAP24HP230V1AH	24K	1/4 x 5/8	FLR24HP230V1BF	24K	3/8 x 5/8	DUCT24HP230V1BD	24K	3/8 x 5/8	0.8
VIREO GEN3			CASSETTE ²			MINI CONSOLE						
3VIR09HP230V1AH	9K	1/4 x 3/8	CAS12HP230V1BC	12K	1/4 x 3/8	CONS09HP230V1AF	9K	1/4 x 3/8				
3VIR12HP230V1AH	12K	1/4 x 1/2	CAS18HP230V1BC	18K	1/4 x 1/2	CONS12HP230V1AF	12K	1/4 x 3/8				
3VIR18HP230V1AH	18K	1/4 x 5/8	CAS24HP230V1BC	24K	3/8 x 5/8	CONS18HP230V1AF	18K	1/4 x 1/2				
3VIR24HP230V1AH	24K	1/4 x 5/8										

¹ LIVS WALL MOUNTS ARE NOT COMPATIBLE WITH BU MODULES (SUPER+ MULTI & SUPER+ MULTI ULTRA). LIVV (LIVO GEN3) WALL MOUNTS ARE COMPATIBLE WITH BU MODULES (SUPER+ MULTI & SUPER+ MULTI ULTRA)

² DECORATIVE CASSETTE GRILLE IS REQUIRED

INDOOR MODEL NO.	NOMINAL CAPACITY (BTU)	LINE SET (PORT) SIZE	CASSETTE	GRILLE	DECORATIVE CASSETTE GRILLES REQUIRED TO OPERATE ²
CAS12HP230V1BC	12K	1/4 x 3/8		CASGRILLEBSM	12K & 18K
CAS18HP230V1BC	18K	1/4 x 1/2			
CAS24HP230V1BC	24K	3/8 x 5/8		CASGRILLEBLG	24K

GLOSSARY

AWG: Main Power Wire Size

MCA: Min Circuit Amps

MOCP: Max Over Current Protection (Amps)

E.S.P.: External Static Pressure

NOTES

ELECTRICAL & COMMUNICATION

- System must be on a single dedicated circuit
- Main power is supplied to the outdoor unit
- Follow all local building codes and NEC regulations
- Interconnecting Cable recommendation: 14/4 AWG stranded copper conductors, THHN 600V unshielded wire
- Use shielded cable if installation is in close proximity to RF and EMI transmitting devices

SYSTEM EFFICIENCY RATINGS

- Check AHRI Documents for SEER/EER/HSPF Ratings

LINE SETS

- Minimum length to indoor unit: 10'
- For 8 Zone operation, use (2) 3 Port BU's and (1) 2 Port BU
- Line Sets are sized to indoor unit port sizes
- See submittals for line set adapters included with outdoor unit, additional field supplied adapters may be required

WIRED & REMOTE CONTROLLERS

- Wireless Remote Controller included with all models
- Wired Controller optional on Livo GEN3, Vireo GEN3 and Sapphire
- Wired Controller included with Slim Duct, Floor/Ceiling, Cassette
- WIFI enabled for Sapphire, Vireo GEN3 and Livo GEN3 optional XE72 WIFI wired controller available for Slim Duct, Floor/Ceiling, Cassette

INSTALL

- Wind baffle not required for outdoor units



MULTI-ZONE COMPATIBILITY CHART

WALL MOUNT OPTIONS

MULTI21+					MULTI+ ULTRA				SUPER+ MULTI		SUPER+ MULTI ULTRA	
MULTI18HP230VIC	MULTI24HP230VIC	MULTI30HP230VIC	MULTI36HP230VIC	MULTI42HP230VIC	MULTI09HP230VID	MULTI12HP230VID	MULTI18HP230VID	MULTI24HP230VID	MULTI30HP230VID	MULTI48HP230VIA	MULTI56HP230VIA	MULTI09HP230VIB

LIVO+ GEN3												
System Model no.												
LIVV09HP230VIAH	•	•	•	•	•	•	•	•	•	•	•	•
LIVV12HP230VIAH	•	•	•	•	•	•	•	•	•	•	•	•
LIVV18HP230VIAH	•	•	•	•	•	•	•	•	•	•	•	•
LIVV24HP230VIAH	•	•	•	•	•	•	•	•	•	•	•	•
LIVV30HP230VIAH	•	•	•	•	•	•	•	•	•	•	•	•
LIVV36HP230VIAH	•	•	•	•	•	•	•	•	•	•	•	•
LIVO+												
System Model no.												
LIVS09HP115V1BH												
LIVS12HP115V1BH												
LIVS09HP230V1BH	•	•	•	•	•	•	•	•	•	•	•	•
LIVS12HP230V1BH	•	•	•	•	•	•	•	•	•	•	•	•
LIVS18HP230V1BH	•	•	•	•	•	•	•	•	•	•	•	•
LIVS24HP230V1BH	•	•	•	•	•	•	•	•	•	•	•	•
LIVS30HP230V1BH	•	•	•	•	•	•	•	•	•	•	•	•
LIVS36HP230V1BH	•	•	•	•	•	•	•	•	•	•	•	•
VIREO+												
System Model no.												
VIR09HP115V1BH												
VIR12HP115V1BH												
VIR09HP230V1BH	•	•	•	•	•	•	•	•	•	•	•	•
VIR12HP230V1BH	•	•	•	•	•	•	•	•	•	•	•	•
VIR18HP230V1BH	•	•	•	•	•	•	•	•	•	•	•	•
VIR24HP230V1BH	•	•	•	•	•	•	•	•	•	•	•	•
VIR30HP230V1BH	•	•	•	•	•	•	•	•	•	•	•	•
VIR36HP230V1BH	•	•	•	•	•	•	•	•	•	•	•	•
VIREO+ GEN3												
System Model no.												
3VIR09HP115V1AH												
3VIR12HP115V1AH												
3VIR09HP230V1AH	•	•	•	•	•	•	•	•	•	•	•	•
3VIR12HP230V1AH	•	•	•	•	•	•	•	•	•	•	•	•
3VIR18HP230V1AH	•	•	•	•	•	•	•	•	•	•	•	•
3VIR24HP230V1AH	•	•	•	•	•	•	•	•	•	•	•	•
SAPPHIRE												
System Model no.												
SAP09HP230V1AH	•	•	•	•	•	•	•	•	•	•	•	•
SAP12HP230V1AH	•	•	•	•	•	•	•	•	•	•	•	•
SAP18HP230V1AH	•	•	•	•	•	•	•	•	•	•	•	•
SAP24HP230V1AH	•	•	•	•	•	•	•	•	•	•	•	•

ADDITIONAL INDOOR UNIT OPTIONS

MULTI21+					MULTI+ ULTRA				SUPER+ MULTI		SUPER+ MULTI ULTRA	
MULTI18HP230VIC	MULTI24HP230VIC	MULTI30HP230VIC	MULTI36HP230VIC	MULTI42HP230VIC	MULTI09HP230VID	MULTI12HP230VID	MULTI18HP230VID	MULTI24HP230VID	MULTI30HP230VID	MULTI48HP230VIA	MULTI56HP230VIA	MULTI09HP230VIB

CONCEALED SLIM DUCT												
System Model no.												
DUCT09HP230VIAD	•	•	•	•	•	•	•	•	•	•	•	•
DUCT12HP230VIAD	•	•	•	•	•	•	•	•	•	•	•	•
DUCT18HP230VIAD	•	•	•	•	•	•	•	•	•	•	•	•
DUCT24HP230VIAD	•	•	•	•	•	•	•	•	•	•	•	•
HIGH STATIC CONCEALED SLIM DUCT												
System Model no.												
DUCT09HP230V1BD	•	•	•	•	•	•	•	•	•	•	•	•
DUCT12HP230V1BD	•	•	•	•	•	•	•	•	•	•	•	•
DUCT18HP230V1BD	•	•	•	•	•	•	•	•	•	•	•	•
DUCT24HP230V1BD	•	•	•	•	•	•	•	•	•	•	•	•
CEILING CASSETTE												
System Model no.												
CAS12HP230V1BC	•	•	•	•	•	•	•	•	•	•	•	•
CAS18HP230V1BC	•	•	•	•	•	•	•	•	•	•	•	•
CAS24HP230V1BC	•	•	•	•	•	•	•	•	•	•	•	•
FLOOR / CEILING												
System Model no.												
FLR09HP230V1BF	•	•	•	•	•	•	•	•	•	•	•	•
FLR12HP230V1BF	•	•	•	•	•	•	•	•	•	•	•	•
FLR18HP230V1BF	•	•	•	•	•	•	•	•	•	•	•	•
FLR24HP230V1BF	•	•	•	•	•	•	•	•	•	•	•	•
MINI-CONSOLE												
System Model no.												
CONS09HP230V1AF	•	•	•	•	•	•	•	•	•	•	•	•
CONS12HP230V1AF	•	•	•	•	•	•	•	•	•	•	•	•
CONS18HP230V1AF	•	•	•	•	•	•	•	•	•	•	•	•





- DC INVERTER-DRIVEN TECHNOLOGY
- SMART TEMPERATURE CONTROL
- COOLING UP TO 129°F
- HEATING DOWN TO -22°F
- IDEAL FOR RESIDENTIAL AND COMMERCIAL SPACES

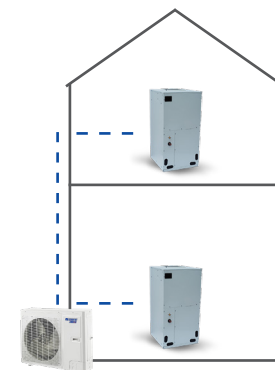
THE MULTIPRO FOR THE ULTIMATE IN COMFORT & FLEXIBILITY.

The GREE MultiPRO is ideal for handling today's challenging spaces. With the outdoor unit's small footprint and long piping capabilities, the system provides optimal installation flexibility and efficiency. Connect to a conventional-style multi-position air handler, high wall, or any of the other 7 ducted and ductless indoor unit options. With ULTRA heating & cooling options, the MultiPRO can also handle up to 10 zones with just one outdoor unit.

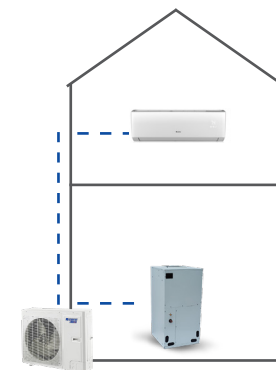
- Up to 10 indoor units with each outdoor unit
- CAN-BUS communication network technology
- Ultra-long piping: up to 985 ft.
- Automatic address setting
- Small installation footprint
- Whisper-quiet operation
- Advanced torque control
- Sensorless DC inverter fan motor
- High efficiency, digital PFC control
- Wide operating range
- Compressor oil storage, separation (2-stage, balance control technology)
- Automatic fault detection

MULTI PRO		GMV-24WL/C-T(U)	GMV-28WL/C-T(U)	GMV-36WL/C-T(U)	GMV-48WL/C-T(U)	GMV-60WL/C-T(U)	GMV-36WL/B-T(U)	GMV-48WL/B-T(U)	
System Type		HEAT PUMP					ULTRA HEAT MODELS		
SYSTEM PERFORMANCE - FOR MORE DETAIL, SEE SALES MANUALS AT GREECOMFORT.COM									
Cooling Capacity	Btu/h	24000	28000	37500	48000	60000	36000	48000	
Heating Capacity	Btu/h	28000	30000	42000	54000	64000	45000	54000	
Cooling Temperature Range (Rated)	°F	23 - 118	23 - 118	23 - 118	23 - 118	23 - 118	50 - 129	50 - 129	
Heating Temperature Range (Rated)	°F	-4 - 81	-4 - 81	-4 - 81	-4 - 81	-4 - 81	-22 - 81	-22 - 81	
SEER (Non-Ducted / Ducted)		18 / 18	18 / 18	22 / 19.5	22 / 19.5	21 / 19.5	20.5 / 16.5	20 / 16.5	
EER @ 95°F (Non-Ducted / Ducted)		11 / 11	11 / 11	11.5 / 11.5	11.5 / 11	11 / 10.5	13 / 11.3	12.5 / 9.5	
HSPF (Non-Ducted / Ducted)		10 / 10	10 / 9	11 / 10.5	10.8 / 10.6	11 / 10.5	11.7 / 10.3	11 / 10.2	
COP @ 47°F (Non-Ducted / Ducted)		2.99 / 3.01	3.16 / 3.16	4.24 / 3.57	4.04 / 3.31	3.89 / 3.58	4.00 / 3.47	3.90 / 3.46	
COP @ 5°F (Non-Ducted / Ducted)		2.4 / 1.48	2.34 / 1.48	1.98 / 1.95	1.99 / 1.92	2.03 / 1.98	1.50 / 1.50	1.50 / 1.50	
Unit Dimension (WxDxH)	in	38 5/8 x 14 3/16 x 31 1/8	38 5/8 x 14 3/16 x 31 1/8	35 7/16 x 13 3/8 x 52 15/16	35 7/16 x 13 3/8 x 52 15/16	37 x 12 5/8 x 56 5/16	35 3/8 x 13 3/8 x 53	35 3/8 x 13 3/8 x 53	
Package Dimension (WxDxH)	in	43-3/16 x 18 3/4 x 36 7/8	43-3/16 x 18 3/4 x 36 7/8	39 1/4 x 18 x 59 1/16	39 1/4 x 18 x 59 1/16	40 5/8 x 17 1/16 x 62 1/4	39 5/16 x 18 1/16 x 59 5/8	39 5/16 x 18 1/16 x 59 5/8	
Weight (Net / Gross)	lbs	176/198	176/198	246/273	246/273	273/299	296/320	296/320	
REFRIGERANT PIPING									
Max. Length from ODU to IDU (Equivalent)	ft	394	394	492	492	492	492	492	
Max. Length from First Branch to IDU	ft	131	131	131	131	131	131	131	
Max. Height Difference ODU to IDU (High/Low)		98/98	98/98	164/131	164/132	164/133	164/134	164/131	
Max. Height Difference IDU to IDU	ft	33	33	49	49	49	49	49	
ELECTRICAL									
Power Supply		208-230V / 1Ph / 60Hz							
MCA	amps	21	21	28.5	33	34.5	37	37	
MOCP	amps	25	30	35	40	40	50	50	
Main Power Wire Size	AWG	Per Local Code							
Interconnecting Wire Size	AWG	18/2 Stranded. Shielding recommended.							
LIMITED WARRANTY		5 Years Parts 7 Years Compressor Residential & Commercial							

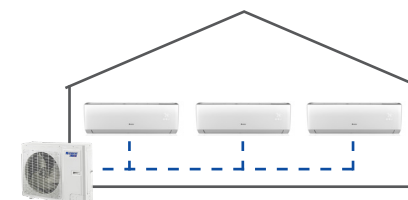
COMMON CONFIGURATIONS



House
2 X
Vertical Air Handlers



House
Vertical Air Handler
+
High Wall



Coffee Shop
3 X
High Walls



Assembly Room
1 X
Universal Floor Ceiling
(5 Ton)

9 INDOOR UNITS TO CHOOSE

- Wall Mount
- Multi-Position Air Handler
- Horizontal Slim Ducted
- 360 Compact Ceiling Cassette
- 360 Standard Ceiling Cassette
- One-Way Cassette
- Two-Way Cassette
- Console
- Floor Ceiling

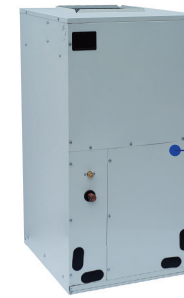


Slim compact design hangs inconspicuously on the wall and mixes with most interior designs.

WALL MOUNT

MODEL	GMV-ND06G/B4B-T(U)	GMV-ND07G/B4B-T(U)	GMV-ND09G/B4B-T(U)	GMV-ND12G/B4B-T(U)	GMV-ND14G/B4B-T(U)	
System Type	HEAT PUMP					
SYSTEM PERFORMANCE (Non-Ducted Indoor Units)						
Cooling Capacity (Min-Max)	Btu/h	6000	7500	9500	12000	15000
Heating Capacity (Min-Max)	Btu/h	6000	8500	10500	13500	17000
MCA	A	1	1	1	1	1
MOP	A	15	15	15	15	15
Air Flow (Min-Max)	CFM	294 / 177	294 / 177	294 / 177	371 / 188	500 / 294
Sound Pressure Level (Min-Max)	dB(A)	35 / 30	35 / 30	35 / 30	38 / 31	43 / 37
Condensate Drain Size (OD)	in	13/16	13/16	13/16	13/16	13/16
Unit Dimension (WxHxD)	in	33 1/4 x 8 1/4 x 11 3/8				
Package Dimension (WxHxD)	in	38 7/16 x 14 15/16 x 11 1/16				
Weight (Net / Gross)	lbs	23.5/27.5				
Line Set Size (Liquid - Gas)	in	1/4 - 3/8	1/4 - 3/8	1/4 - 3/8	1/4-1/2	1/4-1/2
Power Supply	208-230V / 1Ph / 60Hz					
LIMITED WARRANTY	5 Years Parts, 7 Years Compressor – Residential & Commercial					

MODEL	GMV-ND18G/B4B-T(U)	GMV-ND24G/B4B-T(U)	GMV-ND30G/B4B-T(U)	GMV-ND36G/B4B-T(U)	
System Type	HEAT PUMP				
SYSTEM PERFORMANCE (Non-Ducted Indoor Units)					
Cooling Capacity (Min-Max)	Btu/h	18000	24000	30000	32500
Heating Capacity (Min-Max)	Btu/h	20000	25500	34000	36000
MCA	A	1	1	1	1
MOP	A	15	15	15	15
Air Flow (Min-Max)	CFM	647 / 383	706 / 383	912 / 471	971 / 530
Sound Pressure Level (Min-Max)	dB(A)	43 / 37	44 / 37	49 / 40	52 / 40
Condensate Drain Size (OD)	in	13/16	13/16	13/16	13/16
Unit Dimension (WxHxD)	in	42 7/16 x 12 13/16 x 9 11/16		53 1/8 x 10 3/16 x 12 13/16	
Package Dimension (WxHxD)	in	47 3/8 x 16 1/4 x 13 3/4		58 7/8 x 16 9/16 x 14 1/2	
Weight (Net / Gross)	lbs	35.5/42		41/52	
Line Set Size (Liquid - Gas)	in	3/8-5/8	3/8-5/8	3/8-5/8	3/8-5/8
Power Supply	208-230V / 1Ph / 60Hz				
LIMITED WARRANTY	5 Years Parts, 7 Years Compressor – Residential & Commercial				



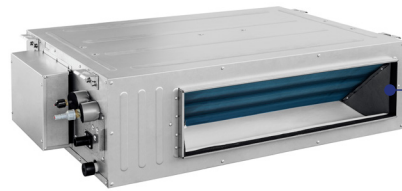
Installation space for this unit is small, allowing easy installation and maintenance. This unit installs like a traditional air handler, using traditional ducting methods. It can be installed in vertical up-flow, horizontal-right, and horizontal-left applications.

MULTI-POSITION AIR HANDLER

MODEL	GMV-ND12A/B-T(U)	GMV-ND18A/B-T(U)	GMV-ND24A/B-T(U)	GMV-ND30A/B-T(U)
System Type	HEAT PUMP			
Cooling Capacity - Nominal	12000	18000	24000	30000
Heating Capacity - Nominal	13500	20000	27000	34000
MCA	3.0	3.0	3.0	4.0
MOP	15	15	15	15
Air Flow (Min-Max)	420 / 300	650 / 300	880 / 690	910 / 710
External Static Pressure (Default/Min-Max)	0.2 / 0-1.0	0.2 / 0-1.0	0.2 / 0-1.0	0.2 / 0-1.0
Sound Pressure Level (Min-Max)	36 / 33	39 / 33	43 / 40	44 / 40
Condensate Drain Size	1	1	1	1
Unit Dimension (WxDxH)	18 1/8 x 21 1/4 x 43 1/2	18 1/8 x 21 1/4 x 43 1/2	18 1/2 x 21 1/4 x 43 1/2	18 1/2 x 21 1/4 x 43 1/2
Package Dimension (WxDxH)	20 3/8 x 24 3/8 x 46 1/8	20 3/8x24 3/8x46 1/8	20 3/8 x 24 3/8 x 46 1/8	20 3/8 x 24 3/8 x 46 1/8
Weight (Net / Gross)	119/130	121/132	123/134	123/134
Line Set Size (Liquid - Gas)	1/4 - 3/8	1/4 - 1/2	3/8 - 5/8	3/8 - 5/8
Power Supply	208-230V / 1Ph / 60Hz			
LIMITED WARRANTY	5 Years Parts, 7 Years Compressor – Residential & Commercial			

MODEL	GMV-ND36A/B-T(U)	GMV-ND42A/B-T(U)	GMV-ND48A/B-T(U)	GMV-ND60A/B-T(U)
System Type	HEAT PUMP			
Cooling Capacity - Nominal	36000	42000	48000	60000
Heating Capacity - Nominal	40000	47000	54000	66000
MCA	5.0	5.0	8.7	8.7
MOP	15	15	15	15
Air Flow (Min-Max)	1230 / 970	1260 / 1000	1800 / 1500	1820 / 1530
External Static Pressure (Default/Min-Max)	0.2 / 0-1.0	0.2 / 0-1.0	0.2 / 0-1.0	0.2 / 0-1.0
Sound Pressure Level (Min-Max)	45 / 42	46 / 43	50 / 48	51 / 49
Condensate Drain Size	1	1	1	1
Unit Dimension (WxDxH)	21 1/4 x 21 1/4 x 48 1/4	21 1/4 x 21 1/4 x 48 1/4	24 3/4 x 21 1/4 x 57	24 3/4 x 21 1/4 x 57
Package Dimension (WxDxH)	26 x 23 3/4 x 50 3/8	26 x 23 3/4 x 50 3/8	27 5/16 x 26 x 59 3/8	27 5/16 x 26 x 59 3/8
Weight (Net / Gross)	159/170	159/170	198/216	198/216
Line Set Size (Liquid - Gas)	3/8 - 5/8	3/8 - 5/8	3/8 - 5/8	3/8 - 5/8
Power Supply	208-230V / 1Ph / 60Hz			
LIMITED WARRANTY	5 Years Parts, 7 Years Compressor – Residential & Commercial			

ELECTRIC HEATER KITS		
HEATER MODEL NUMBERS	DESCRIPTION	AIR HANDLER COMBINATION
FLEXHTR5KW	5 kW	GMV-ND09A/B-T(U) GMV-ND12A/B-T(U) GMV-ND18A/B-T(U)
FLEXHTR5KW	5 kW	
FLEXHTR8KW	8 kW	GMV-ND24A/B-T(U) GMV-ND30A/B-T(U) GMV-ND36A/B-T(U)
FLEXHTR10KW	10 kW	
FLEXHTR5KW	5 kW	
FLEXHTR8KW	8 kW	GMV-ND36A/B-T(U) GMV-ND42A/B-T(U) GMV-ND48A/B-T(U)
FLEXHTR10KW	10 kW	
FLEXHTR15KW	15 kW	GMV-ND54A/B-T(U) GMV-ND60A/B-T(U)
FLEXHTR20KW	20 kW	

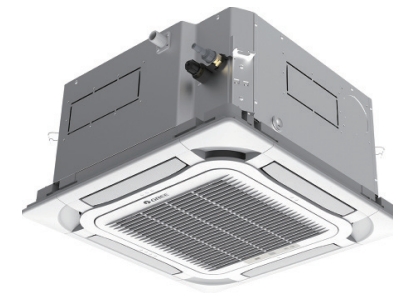


Compact and powerful, the high static slim duct offers the ultimate in flexibility and discretion. Concealed above a suspended ceiling or within open closet spaces to deliver conditioned air via extended ducting and suitable ceiling or wall grilles.

HORIZONTAL SLIM DUCTED

MODEL		GMV-ND07PHS/B-T(U)	GMV-ND09PHS/B-T(U)	GMV-ND12PHS/B-T(U)	GMV-ND15PHS/B-T(U)	GMV-ND18PHS/B-T(U)
System Type						
HEAT PUMP						
Cooling Capacity - Nominal	Btu/h	7500	9500	12000	15000	18000
Heating Capacity - Nominal	Btu/h	8500	10500	13500	17000	20000
MCA	A	1	1	1	1	1
MOP	A	15	15	15	15	15
Air Flow (Min-Max)	CFM	324 / 235	324 / 235	353 / 247	500 / 353	589 / 412
External Static Pressure (Default/Min-Max)	In W.c.	0.24/0-0.6	0.24/0-0.6	0.24/0-0.6	0.24/0-0.6	0.36/0-0.8
Sound Pressure Level (Min-Max)	dB(A)	35 / 31	35 / 31	36 / 32	40 / 34	42 / 35
Condensate Drain Size	in	1	1	1	1	1
Unit Dimension (WxDxH)	in	27 9/16 x 27 9/16 x 11 13/16	27 9/16 x 27 9/16 x 11 13/16	39 3/8 x 27 9/16 x 11 13/16	39 3/8 x 27 9/16 x 11 13/16	39 3/8 x 27 9/16 x 11 13/16
Package Dimension (WxDxH)	in	35 5/16 x 32 x 14 3/16	35 5/16 x 32 x 14 3/16	47 7/16 x 32 x 14 3/16	47 7/16 x 32 x 14 3/16	47 7/16 x 32 x 14 3/16
Weight (Net / Gross)	lbs	73/86	73/86	94/108	94/108	94/108
Line Set Size (Liquid - Gas)	in	1/4 - 3/8	1/4 - 1/2	1/4 - 1/2	1/4 - 1/2	3/8 - 5/8
Power Supply		208-230V / 1Ph / 60Hz				
LIMITED WARRANTY		5 Years Parts, 7 Years Compressor – Residential & Commercial				

MODEL		GMV-ND22PHS/B-T(U)	GMV-ND24PHS/B-T(U)	GMV-ND30PHS/B-T(U)	GMV-ND36PHS/B-T(U)	GMV-ND42PHS/B-T(U)
System Type						
HEAT PUMP						
Cooling Capacity - Nominal	Btu/h	22000	24000	30000	36000	42000
Heating Capacity - Nominal	Btu/h	24000	27000	34000	40000	47000
MCA	A	1	1.2	1.7	1.7	1.7
MOP	A	15	15	15	15	15
Air Flow (Min-Max)	CFM	589 / 412	736 / 559	1059 / 736	1177 / 824	1177 / 824
External Static Pressure (Default/Min-Max)	In W.c.	0.36/0-0.8	0.36/0-0.8	0.36/0-0.8	0.36/0-0.8	0.36/0-0.8
Sound Pressure Level (Min-Max)	dB(A)	42 / 35	43 / 35	44 / 38	45 / 40	45 / 40
Condensate Drain Size	in	1	1	1	1	1
Unit Dimension (WxDxH)	in	39 3/8 x 27 9/16 x 11 13/16	39 3/8 x 27 9/16 x 11 13/16	55 1/8 x 27 9/16 x 11 13/16	55 1/8 x 27 9/16 x 11 13/16	55 1/8 x 27 9/16 x 11 13/16
Package Dimension (WxDxH)	in	47 7/16 x 32 x 14 3/16	47 7/16 x 32 x 14 3/16	63 1/16 x 32 x 14 3/8	63 1/16 x 32 x 14 3/8	63 1/16 x 32 x 14 3/8
Weight (Net / Gross)	lbs	94/108	94/108	121/137	121/137	121/137
Line Set Size (Liquid - Gas)	in	3/8 - 5/8	3/8 - 5/8	3/8 - 5/8	3/8 - 5/8	3/8 - 5/8
Power Supply		208-230V / 1Ph / 60Hz				
LIMITED WARRANTY		5 Years Parts, 7 Years Compressor – Residential & Commercial				



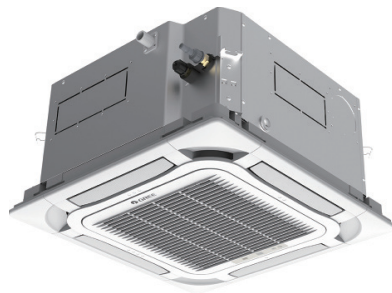
The 360° air supply design provides complete airflow coverage and balanced temperature distribution, making for a more comfortable space.

360 COMPACT CEILING CASSETTE

MODEL		GMV-ND05T/E-T(U)	GMV-ND07T/E-T(U)	GMV-ND09T/E-T(U)	GMV-ND12T/E-T(U)	GMV-ND18T/E-T(U)
System Type						
HEAT PUMP						
Cooling Capacity - Nominal	Btu/h	5800	7500	9500	12000	18000
Heating Capacity - Nominal	Btu/h	6200	8500	10500	13500	20000
MCA	A	0.7	0.7	0.7	0.8	0.8
MOP	A	15	15	15	15	15
Air Flow (Min-Max)	CFM	33 / 25	36 / 25	36 / 28	39 / 35	43 / 39
Sound Pressure Level (Min-Max)	dB(A)	35 / 31	35 / 31	36 / 32	40 / 34	42 / 35
Condensate Drain Size	in	1	1	1	1	1
Unit Dimension (WxDxH)	in	22 7/16 x 22 7/16 x 10 7/16	22 7/16 x 22 7/16 x 10 7/16	22 7/16 x 22 7/16 x 10 7/16	22 7/16 x 22 7/16 x 10 7/16	22 7/16 x 22 7/16 x 10 7/16
Package Dimension (WxDxH)	in	27 1/2 x 25 11/16 x 11 5/8	27 1/2 x 25 11/16 x 11 5/8	27 1/2 x 25 11/16 x 11 5/8	27 1/2 x 25 11/16 x 11 5/8	27 1/2 x 25 11/16 x 11 5/8
Weight (Net / Gross)	lbs	38.6/49.6	38.6/49.6	38.6/49.6	38.6/49.6	38.6/49.6
Line Set Size (Liquid - Gas)	in	1/4 - 1/2	1/4 - 3/8	1/4 - 3/8	1/4 - 1/2	3/8 - 5/8
Power Supply		208-230V / 1Ph / 60Hz				
LIMITED WARRANTY		5 Years Parts, 7 Years Compressor – Residential & Commercial				

CASSETTE GRILLE (Required)		TF05	TF05	TF05	TF05	TF05
Grille Dimension (WxDxH)	in	24 3/8 x 24 3/8 x 1 7/8	24 3/8 x 24 3/8 x 1 7/8	24 3/8 x 24 3/8 x 1 7/8	24 3/8 x 24 3/8 x 1 7/8	24 3/8 x 24 3/8 x 1 7/8
Package Dimension (WxDxH)	in	27 5/8 x 27 5/8 x 5	27 5/8 x 27 5/8 x 5	27 5/8 x 27 5/8 x 5	27 5/8 x 27 5/8 x 5	27 5/8 x 27 5/8 x 5
Weight (Net / Gross)	lbs	6.6/10	6.6/10	6.6/10	6.6/10	6.6/10





360° air supply design for wide air supply range and balanced temperature distribution, more comfortable.

360 STANDARD CEILING CASSETTE

MODEL		GMV-ND07T/C-T(U)	GMV-ND09T/C-T(U)	GMV-ND12T/C-T(U)	GMV-ND15T/C-T(U)	GMV-ND18T/C-T(U)
System Type						
HEAT PUMP						
Cooling Capacity - Nominal	Btu/h	7500	9500	12000	15000	18000
Heating Capacity - Nominal	Btu/h	8500	10500	13500	17000	20000
MCA	A	1	1	1	1	1
MOP	A	15	15	15	15	15
Air Flow (Min-Max)	CFM	471 / 353	471 / 353	471 / 353	471 / 353	559 / 441
Sound Pressure Level (Min-Max)	dB(A)	33 / 28	33 / 28	33 / 28	33 / 28	36 / 30
Condensate Drain Size	in	1	1	1	1	1
Unit Dimension (WxDxH)	in	33 1/8 x 33 1/8 x 9 1/2				
Package Dimension (WxDxH)	in	37 7/8 x 37 7/8 x 12 3/4	37 7/8 x 37 7/8 x 12 3/4	37 7/8 x 37 7/8 x 12 3/4	37 7/8 x 37 7/8 x 12 3/4	37 7/8 x 37 7/8 x 12 3/4
Weight (Net / Gross)	lbs	13.2/20.9	13.2/20.9	13.2/20.9	13.2/20.9	13.2/20.9
Line Set Size (Liquid - Gas)	in	1/4 - 3/8	1/4 - 1/2	3/8 - 5/8	3/8 - 5/8	3/8 - 5/8
Power Supply		208-230V / 1Ph / 60Hz				
LIMITED WARRANTY		5 Years Parts, 7 Years Compressor - Residential & Commercial				

MODEL		GMV-ND24T/C-T(U)	GMV-ND30T/C-T(U)	GMV-ND36T/C-T(U)	GMV-ND42T/C-T(U)	GMV-ND48T/C-T(U)
System Type						
HEAT PUMP						
Cooling Capacity - Nominal	Btu/h	24000	30000	36000	42000	48000
Heating Capacity - Nominal	Btu/h	27000	34000	40000	47000	54000
MCA	A	1	1	1	1	1
MOP	A	15	15	15	15	15
Air Flow (Min-Max)	CFM	677 / 500	736 / 530	883 / 589	971 / 647	971 / 647
Sound Pressure Level (Min-Max)	dB(A)	37 / 31	39 / 34	41 / 37	43 / 39	43 / 39
Condensate Drain Size	in	1	1	1	1	1
Unit Dimension (WxDxH)	in	33 1/8 x 33 1/8 x 9 1/2	33 1/8 x 33 1/8 x 11 3/8	33 1/8 x 33 1/8 x 11 3/8	33 1/8 x 33 1/8 x 11 3/8	33 1/8 x 33 1/8 x 11 3/8
Package Dimension (WxDxH)	in	37 7/8 x 37 7/8 x 12 3/4	37 7/8 x 37 7/8 x 14 7/8	37 7/8 x 37 7/8 x 14 7/8	37 7/8 x 37 7/8 x 14 7/8	37 7/8 x 37 7/8 x 14 7/8
Weight (Net / Gross)	lbs	63.9/81.6	68.4/83.8	77.2/97	77.2/97	77.2/97
Line Set Size (Liquid - Gas)	in	3/8 - 5/8	3/8 - 5/8	3/8 - 5/8	3/8 - 5/8	3/8 - 5/8
Power Supply		208-230V / 1Ph / 60Hz				
LIMITED WARRANTY		5 Years Parts, 7 Years Compressor - Residential & Commercial				

CASSETTE GRILLE (Required)		TE01	TE01	TE01	TE01	TE01
Grille Dimension (WxDxH)	in	24 3/8 x 24 3/8 x 1 7/8	24 3/8 x 24 3/8 x 1 7/8	24 3/8 x 24 3/8 x 1 7/8	24 3/8 x 24 3/8 x 1 7/8	24 3/8 x 24 3/8 x 1 7/8
Package Dimension (WxDxH)	in	27 5/8 x 27 5/8 x 5	27 5/8 x 27 5/8 x 5	27 5/8 x 27 5/8 x 5	27 5/8 x 27 5/8 x 5	27 5/8 x 27 5/8 x 5
Weight (Net / Gross)	lbs	6.6/10	6.6/10	6.6/10	6.6/10	6.6/10



With an ultra thin design at less than 7-5/16" tall, the unit can be installed in a 7-1/2" ceiling.

ONE-WAY CASSETTE

MODEL		GMV-ND07TD/A-T(U)	GMV-ND09TD/A-T(U)	GMV-ND12TD/A-T(U)
System Type				
HEAT PUMP				
Cooling Capacity - Nominal	Btu/h	7500	9500	12000
Heating Capacity - Nominal	Btu/h	8500	10500	13500
MCA	A	1	1	1
MOP	A	15	15	15
Air Flow (Min-Max)	CFM	353 / 265	353 / 265	353 / 265
Sound Pressure Level (Min-Max)	dB(A)	36 / 28	36 / 28	36 / 28
Condensate Drain Size	in	1	1	1
Unit Dimension (WxDxH)	in	38 7/8 x 15 3/16 x 7	38 7/8 x 15 3/16 x 7	38 7/8 x 15 3/16 x 7
Package Dimension (WxDxH)	in	51 1/2 x 19 3/4 x 12 3/16	51 1/2 x 19 3/4 x 12 3/16	51 1/2 x 19 3/4 x 12 3/16
Weight (Net / Gross)	lbs	44/60	44/60	44/60
Line Set Size (Liquid - Gas)	in	1/4 - 3/8	1/4 - 3/8	1/4 - 1/2
Power Supply		208-230V / 1Ph / 60Hz		
LIMITED WARRANTY		5 Years Parts, 7 Years Compressor - Residential & Commercial		

CASSETTE GRILLE (Required)		TD01	TD01	TD01
Grille Dimension (WxDxH)	in	47 1/4 x 18 1/8 x 2 3/16	47 1/4 x 18 1/8 x 2 3/16	47 1/4 x 18 1/8 x 2 3/16
Package Dimension (WxDxH)	in	49 13/16 x 21-1/8 x 4 3/4	49 13/16 x 21 1/8 x 4 3/4	49 13/16 x 21 1/8 x 4 3/4
Weight (Net / Gross)	lbs	9.3/13.2	9.3/13.2	9.3/13.2



The two-way cassette unit has a very thin body (11inches) which is more practical in field applications as less installation space is required.

TWO-WAY CASSETTE

MODEL		GMV-ND09TS/B-T(U)	GMV-ND12TS/B-T(U)	GMV-ND15TS/B-T(U)	GMV-ND18TS/B-T(U)	GMV-ND24TS/B-T(U)
System Type						
HEAT PUMP						
Cooling Capacity - Nominal	Btu/h	9500	12000	15000	18000	24000
Heating Capacity - Nominal	Btu/h	10500	13500	17000	20000	27000
MCA	A	1	1	1	1	1
MOP	A	15	15	15	15	15
Air Flow (Min-Max)	CFM	395 / 363 / 302	395 / 363 / 302	421 / 363 / 302	450 / 417 / 398	480 / 438 / 388
Sound Pressure Level	dB(A)	33 / 31 / 28	33 / 31 / 28	35 / 31 / 28	37 / 35 / 32	39 / 37 / 34
Dehumidification	pt/hr	2.96	3.8	5.28	5.28	5.28
Condensate Drain Size	in	1	1	1	1	1
Unit Dimension (WxDxH)	in	31 1/8 x 24 13/16 x 11	31 1/8 x 24 13/16 x 11	31 1/8 x 24 13/16 x 11	31 1/8 x 24 13/16 x 11	31 1/8 x 24 13/16 x 11
Package Dimension (WxDxH)	in	40 5/8 x 29 1/8 x 14 3/8	40 5/8 x 29 1/8 x 14 3/8	40 5/8 x 29 1/8 x 14 3/8	40 5/8 x 29 1/8 x 14 3/8	40 5/8 x 29 1/8 x 14 3/8
Weight (Net / Gross)	lbs	56/74	56/74	56/74	57/76	57/76
Line Set Size (Liquid - Gas)	in	1/4 - 3/8	1/4 - 1/2	1/4 - 1/2	3/8 - 5/8	3/8 - 5/8
Power Supply		208-230V / 1Ph / 60Hz				
LIMITED WARRANTY		5 Years Parts, 7 Years Compressor - Residential & Commercial				

CASSETTE GRILLE (Required)		TE03	TE03	TE03	TE03	TE03
Grille Dimension (WxDxH)	in	43 5/16 x 28 x 1 3/32	43 5/16 x 28 x 1 3/32	43 5/16 x 28 x 1 3/32	43 5/16 x 28 x 1 3/32	43 5/16 x 28 x 1 3/32
Package Dimension (WxDxH)	in	48 7/16 x 33 3/16 x 5 1/8	48 7/16 x 33 3/16 x 5 1/8	48 7/16 x 33 3/16 x 5 1/8	48 7/16 x 33 3/16 x 5 1/8	48 7/16 x 33 3/16 x 5 1/8
Weight (Net / Gross)	lbs	13/23	13/23	13/23	13/23	13/23



Installed low on a wall, it is perfect for knee-walls and radiator-style installations.

CONSOLE

MODEL		GMV-ND07C/A-T(U)	GMV-ND09C/A-T(U)	GMV-ND12C/A-T(U)	GMV-ND18C/A-T(U)
System Type					
HEAT PUMP					
Cooling Capacity - Nominal	Btu/h	7500	9500	12000	18000
Heating Capacity - Nominal	Btu/h	8500	11000	13500	20000
MCA	A	1	1	1	1
MOP	A	15	15	15	15
Air Flow (Min-Max)	CFM	235 / 159	235 / 159	282 / 182	400 / 294
Sound Pressure Level (Min-Max)	dB(A)	38 / 27	38 / 27	40 / 32	46 / 39
Condensate Drain Size	in	1	1	1	1
Unit Dimension (WxDxH)	in	27 9/16 x 8 1/2 x 23 5/8	27 9/16 x 8 1/2 x 23 5/8	27 9/16 x 8 1/2 x 23 5/8	27 9/16 x 8 1/2 x 23 5/8
Package Dimension (WxDxH)	in	31 x 11 1/8 x 30 5/8	31 x 11 1/8 x 30 5/8	31 x 11 1/8 x 30 5/8	31 x 11 1/8 x 30 5/8
Weight (Net / Gross)	lbs	35/42	35/42	35/42	35/42
Line Set Size (Liquid - Gas)	in	1/4 - 3/8	1/4 - 3/8	1/4 - 1/2	1/4 - 1/2
Power Supply		208-230V / 1Ph / 60Hz			
LIMITED WARRANTY		5 Years Parts, 7 Years Compressor – Residential & Commercial			



The unit can be ceiling or floor mounted. Excellent air throw when ceiling mounted.

FLOOR CEILING

MODEL		GMV-ND09ZD/A-T(U)	GMV-ND12ZD/A-T(U)	GMV-ND18ZD/A-T(U)	GMV-ND24ZD/A-T(U)
System Type					
HEAT PUMP					
Cooling Capacity - Nominal	Btu/h	9500	12000	18000	24000
Heating Capacity - Nominal	Btu/h	10500	13500	20000	27000
MCA	A	1	1	1	1
MOP	A	15	15	15	15
Air Flow (Min-Max)	CFM	471 / 353	471 / 353	471 / 353	471 / 353
Sound Pressure Level (Min-Max)	dB(A)	33 / 28	33 / 28	33 / 28	33 / 28
Condensate Drain Size	in	1	1	1	1
Unit Dimension (WxDxH)	in	48 x 8 7/8 x 27 9/16	48 x 8 7/8 x 27 9/16	48 x 8 7/8 x 27 9/16	56 x 9 5/8 x 27 9/16
Package Dimension (WxDxH)	in	52 7/8 x 12 3/8 x 32 3/8	52 7/8 x 12 3/8 x 32 3/8	52 7/8 x 12 3/8 x 32 3/8	60 15/16 x 13 9/16 x 32 5/8
Weight (Net / Gross)	lbs	13.2/20.9	13.2/20.9	13.2/20.9	13.2/20.9
Line Set Size (Liquid - Gas)	in	1/4 - 3/8	1/4 - 1/2	3/8 - 5/8	3/8 - 5/8
Power Supply		208-230V / 1Ph / 60Hz			
LIMITED WARRANTY		5 Years Parts, 7 Years Compressor – Residential & Commercial			

MODEL		GMV-ND30ZD/A-T(U)	GMV-ND36ZD/A-T(U)	GMV-ND42ZD/A-T(U)	GMV-ND48ZD/A-T(U)
System Type					
HEAT PUMP					
Cooling Capacity - Nominal	Btu/h	30000	36000	42000	48000
Heating Capacity - Nominal	Btu/h	33000	40000	47000	54000
MCA	A	1	1	1	1
MOP	A	15	15	15	15
Air Flow (Min-Max)	CFM	1230 / 970	1260 / 1000	1800 / 1500	1820 / 1530
Sound Pressure Level (Min-Max)	dB(A)	45 / 42	46 / 43	50 / 48	51 / 49
Condensate Drain Size	in	1	1	1	1
Unit Dimension (WxDxH)	in	56 x 9 5/8 x 27 9/16	66 15/16 x 9 5/8 x 27 9/16	66 15/16 x 9 5/8 x 27 9/16	66 15/16 x 9 5/8 x 27 9/16
Package Dimension (WxDxH)	in	60 15/16 x 13 9/16 x 32 5/8	71 15/16 x 13 9/16 x 32 5/8	71 15/16 x 13 9/16 x 32 5/8	71 15/16 x 13 9/16 x 32 5/8
Weight (Net / Gross)	lbs	110/128	132/150	132/150	132/150
Line Set Size (Liquid - Gas)	in	3/8 - 5/8	3/8 - 5/8	3/8 - 5/8	3/8 - 5/8
Power Supply		208-230V / 1Ph / 60Hz			
LIMITED WARRANTY		5 Years Parts, 7 Years Compressor – Residential & Commercial			

CONTROLS & ACCESSORIES

MODEL NUMBER	CONTROLLER	STANDARD	COMPATIBLE WITH	KEYPAD FEATURES & FUNCTIONS
YAPIF		INCLUDED	HIGH WALL CEILING CASSETTES FLOOR CEILING CONSOLE	Wireless Remote Controller <ul style="list-style-type: none"> Included with all ductless units including High Wall, Ceiling Cassettes, Floor Ceiling, and Consoles Includes all operation features such as mode selection, fan speeds, setpoint control, timers, sleep, and more
XK46		ALL DUCTED UNITS EXCEPT MULTI-POSITION AIR HANDLER	ALL INDOOR UNIT TYPES	Basic Wired Controller (Non-Programmable) <ul style="list-style-type: none"> Included with all ducted-style units except for the Multi-Position Air Handler Capacitive touch screen ensures long life Includes all operation features such as mode selection, fan speeds, setpoint control, timers, sleep, and more Enables access to user and engineering parameters and can display all troubleshooting data including indoor and outdoor data
XK79		NONE	ALL INDOOR UNIT TYPES	Gate Control Wired Controller (With Remote On/Off) (Non-programmable) <ul style="list-style-type: none"> Includes all operation features such as mode selection, fan speeds, setpoint control, timers, sleep, and more Enables access to user and engineering parameters and can display all troubleshooting data Remote operation interface built in. Connect to door switches, motion sensors, and more
XE70-33/H		MULTI-POSITION AIR HANDLER	ALL INDOOR UNIT TYPES	7-Day Programmable Wired Controller with Gate Control (Remote On/Off) <ul style="list-style-type: none"> Included with Multi-Position Air Handler Capacitive touch screen ensures long life Seven Day programmable. Set up to 4 weekly schedules and enable or disable specific days within a schedule Remote operation interface built in. Connect to door switches, motion sensors, and more Enables access to user and engineering parameters and can display all troubleshooting data including indoor and outdoor data Includes all operation features such as mode selection, fan speeds, setpoint control, timers, sleep, and more
CE52-24/F(C)		NONE	ALL INDOOR UNIT TYPES	E-Smart Zone Central Controller <ul style="list-style-type: none"> Allows central control of up to 16 systems and 32 indoor units Seven Day programmable. Set up to 4 weekly schedules and enable or disable specific days within a schedule Operate and schedule individual units or set multiple groups of units to be controlled at the same time Customizable names and icons for each zone Easy-to-read color touchscreen (3-3/8"H x 5"W). Only 7/16" thick when flush-mounted Includes galvanized mounting box with grommets for non-flush-mount installation (1-1/2" thick) Independent power supply (100-240V)
ME32-33/H		NONE	ALL INDOOR UNIT TYPES	Universal 24V Adapter with Dry Contact Interface <ul style="list-style-type: none"> Enables use of your favorite third-party 24VAC thermostat or control system Up to three fan speeds (G1, G2, G3) Four sets of dry contacts are available for broad control including remote on/off, emergency shut down, and more 24V transformer is required unless installed with a Multi-Position Air Handler



A COOL CROWD PLEASER



CLIMATE CONTROL MADE SIMPLE.

With its impressive array of features and benefits, the GREE E-TAC II is the perfect solution for heating and cooling hospitality, healthcare and specialty residential installations.

- HIGH EFFICIENCY, UP TO 13 EER
- CONTROLS EXPENSES, MAXIMIZES COMFORT
- IDEAL FOR HOSPITALITY AND INSTITUTIONAL USE
- PROGRAMMABLE OPERATION
- EXTERNAL THERMOSTAT CAPABILITIES

- Self-Diagnosis
- Wall thermostat interface
- Remote controller option
- Preset adjustable factory setpoint limits
- Energy-efficient operation
- Programmable sleep timer function for automatic shutoff
- Dry-mode dehumidification
- Automatic voltage adaption
- Easy-to-use controls; large digital display
- Freeze protection
- Large assortment of optional accessories to complement any architecture
- Easy retrofitting into most competitive wall sleeves (without a kit)
- Outdoor coil sea coast protection now standard on all units

MODEL	ETAC2-07HC230VA-CP	ETAC2-09HC230VA-CP	ETAC2-12HC230VA-CP	ETAC2-15HC230VA-CP	ETAC2-07HC265VA-CP	ETAC2-09HC265VA-CP	ETAC2-12HC265VA-CP	ETAC2-15HC265VA-CP	
System Type	COOLING W/ ELECTRIC HEATING								
Cooling Capacity	Btu/h	7200	9400	11800	14500	7200	9400	11800	14500
EER		13	12.1	11.6	10.4	13	12.1	11.6	10.4
Energy Star®	NO								
Cooling Temperature Range	°F	55 - 83							
Compressor Type	Rotary with automatic reset, over temperature and over current protection and random restart								
Air Flow (Min-Max)	CFM	312 / 282	330 / 294	341 / 306	341 / 306	312 / 282	330 / 294	341 / 306	341 / 306
Sound Pressure Level (Down to)	dB(A)	48	50	50	51	48	50	50	51
Dehumidification	pt/hr	1.69	2.11	2.75	3.17	1.69	2.11	2.75	3.17
Unit Dimension (WxHxD)	in	42 x 16 x 21 1/2							
Package Dimension (WxHxD)	in	45 x 17 7/8 x 25 3/5							
Weight (Net / Gross)	lbs	104.7 / 124.6	113.5 / 133.4	118 / 137.8	119 / 138.9	105.8 / 125.7	113.5 / 133.4	116.9 / 136.7	119 / 138.9
Refrigerant Type	R410A								
Coil Type	Aluminum Fin-Copper Tube / Acrylic Resin Protection								
POWER SUPPLY	208-230V / 1Ph / 60Hz				265V / 1Ph / 60Hz				
Rated Current Cooling	amps	2.7	3.7	4.9	6.2	2.4	3.3	4.2	5.4
Power Cord Selection	amps	15 / 20	15 / 20	15 / 20 / 30	15 / 20 / 30	15 / 20	15 / 20	15 / 20 / 30	15 / 20 / 30
LIMITED WARRANTY	5 Years Parts, 7 Years Compressor – Residential & Commercial								

MODEL	ETAC2-07HP230VA-CP	ETAC2-09HP230VA-CP	ETAC2-12HP230VA-CP	ETAC2-15HP230VA-CP	ETAC2-07HP265VA-CP	ETAC2-09HP265VA-CP	ETAC2-12HP265VA-CP	ETAC2-15HP265VA-CP	
System Type	HEAT PUMP (COOLING & HEATING) W/ BACKUP ELECTRIC HEATING								
Cooling Capacity	Btu/h	7200	9400	11800	14500	7200	9400	11800	14500
Heating Capacity	Btu/h	6000	8300	10600	13300	6000	8300	10600	13300
EER		13	12.1	11.6	10.4	13.0	12.1	11.6	10.4
COP		3.6	3.5	3.4	3.1	3.6	3.5	3.4	3.1
Energy Star®	NO								
Cooling Temperature Range	°F	55 - 83							
Heating Temperature Range (Heat Pump)	°F	47 - 75							
Compressor Type	Rotary with automatic reset, over temperature and over current protection and random restart								
Air Flow (Min-Max)	CFM	312 / 282	330 / 294	341 / 306	341 / 306	312 / 282	330 / 294	341 / 306	341 / 306
Sound Pressure Level (Down to)	dB(A)	48	50	50	51	48	50	50	51
Dehumidification	pt/hr	1.69	2.11	2.75	3.17	1.69	2.11	2.75	3.17
Unit Dimension (WxHxD)	in	42 x 16 x 21 1/2							
Package Dimension (WxHxD)	in	45 x 17 25 3/5 x 17 7/8							
Weight (Net / Gross)	lbs	111.3 / 131.2	118 / 137.8	120.2 / 140	122.4 / 142.2	110.2 / 130.1	118 / 137.8	118 / 137.8	120.2 / 142.2
Refrigerant Type	R410A								
Coil Type	Aluminum Fin-Copper Tube / Acrylic Resin Protection								
POWER SUPPLY	208-230V / 1Ph / 60Hz				265V / 1Ph / 60Hz				
Rated Current Cooling	amps	2.9	3.9	5.1	6.7	2.40	3.30	4.2	5.4
Rated Current Heating (Heat Pump)	amps	2.6	3.4	4.7	6.7	2.2	3.1	3.7	5.2
Power Cord Selection	amps	15 , 20	15 , 20	15 , 20 , 30	15 , 20 , 30	15 , 20	15 , 20	15 , 20 , 30	15 , 20 , 30
LIMITED WARRANTY	5 Years Parts, 7 Years Compressor – Residential & Commercial								

POWER CORDS - MODEL NUMBER	E2CORD-230V15A	E2CORD-230V20A	E2CORD-230V30A	E2CORD-265V15A	E2CORD-265V20A	E2CORD-265V30A	
Voltage Rating	Volts	208-230V / 1Ph / 60Hz	208-230V / 1Ph / 60Hz	208-230V / 1Ph / 60Hz	265V / 1Ph / 60Hz	265V / 1Ph / 60Hz	
Breaker Size	amps	Per Local Code					
Minimum Circuit Ampacity	MCA	14	19	28	12	17	24
Electric Heating Capacity	Btu/h	8367	8367 / 11782	8367 / 11782 / 17075	8367	8367 / 11782	8367 / 11782 / 17075
Electric Heater	KW	2.45	2.45/3.45	2.45 / 3.45 / 5	2.45	2.45/3.45	2.45 / 3.45 / 5
Receptacle (NEMA Number)	Type	Tandem (6-15R)	Perpendicular (6-20R)	Large Tandem (6-30R)	265V 15 Amp (7-15R)	265V 20 Amp (7-20R)	265V 30 Amp (7-30R)
Plug Configuration NEMA Number		6-15P	6-20P	6-30P	7-15P	7-20P	7-30P



THE EFFICIENCY IS BUILT RIGHT IN



THROUGH-THE-WALL COMFORT.

GREE's Through-The-Wall unit delivers all-season comfort and efficiency with a rugged construction that's built to last. Operation and maintenance are a breeze with a simple, digital touchpad and LED display. Programmable operation with setpoint limits and a 3-speed fan let users make easy adjustments every time.

- PROGRAMMABLE FAN
- LED DISPLAY SETTINGS
- MULTIPLE FAN SPEEDS
- RUGGED CONSTRUCTION
- SIMPLE OPERATION

- Electronic setpoint limits
- Multiple fan speeds
- Automatic voltage adaption
- Dual motor technology
- Aero-quiet indoor blower wheel
- Directional airflow control
- Digital thermostat touch-pad control panel
- LED display settings
- Washable, polymeric air filters
- Wireless remote controller

MODEL	26TTW09AC115A-T	26TTW12AC115A-T	26TTW09AC230A-T	26TTW12AC230A-T
System Type	COOLING ONLY			
Cooling Capacity	Btu/h 9300	11800	9300	12000
Energy Efficiency Rating	EER 9.8	9.8	9.8	9.8
Cooling Temperature Range	°F 64 - 109			
Air Flow (Min-Max)	CFM 235 - 283	235 - 283	235 - 283	235 - 283
Dehumidification	pt/hr 2.32	3.49	2.32	3.49
Unit Dimension (WxHxD)	in 26 x 15 5/8 x 21 3/16			
Weight (Net / Gross)	lbs 74 / 87	80 / 93	71 / 84	79 / 92
Refrigerant Type / Coil Type	R410A / Aluminum Fin-Copper Tube			

POWER SUPPLY	115V / 1Ph / 60Hz		208-230V / 1Ph / 60Hz	
Current Cooling	amps 8.7	11.0	4.3	5.7
Power Cord Length	in 96	96	72	72
Plug Configuration NEMA Number	NEMA5-15P	NEMA5-15P	NEMA6-15P	NEMA6-15P

MODEL	26TTW09HC230A-T	26TTW12HC230A-T
System Type	COOLING W/ ELECTRIC HEATING	
Cooling Capacity	Btu/h 9300	12000
Heating Capacity (Electric)	KW 3.5	3.5
Energy Efficiency Rating	EER 9.8	9.8
Cooling Temperature Range	°F 64 - 109	
Air Flow (Min-Max)	CFM 224 - 271	224 - 271
Dehumidification	pt/hr 2.32	3.49
Unit Dimension (WxHxD)	in 26 x 15 5/8 x 21 3/16	
Weight (Net / Gross)	lbs 74 / 87	81 / 94
Refrigerant Type / Coil Type	R410A / Aluminum Fin-Copper Tube	

POWER SUPPLY	208-230V / 1Ph / 60Hz	
Current Cooling	amps 4.3	5.7
Current Heating	amps 6.1	8
Power Cord Length	in 72	72
Plug Configuration NEMA Number	NEMA6-20P	

MODEL	26TTW09HP115A-T	26TTW07HP230A-T	26TTW09HP230A-T	26TTW12HP230A-T
System Type	HEAT PUMP W/ BACKUP ELECTRIC HEATING			
Cooling Capacity	Btu/h 9000	7400	9300	11700
Heating Capacity	Btu/h 8500	6800	8800	11400
Heating Capacity (Electric Backup)	KW 3.5			
Energy Efficiency Rating	EER 9.8	10.6	9.7	9.6
COP	3.0	3.1	3	2.9
Cooling Temperature Range	°F 64 - 109			
Heating Temperature Range	°F 19 - 86			
Air Flow (Min-Max)	CFM 224 - 271			
Dehumidification	pt/hr 2.32	1.37	2.32	3.49
Unit Dimension (WxHxD)	in 26 x 15 5/8 x 21 3/16			
Weight (Net / Gross)	lbs 79 / 92	76 / 90	83 / 96	86 / 100
Refrigerant Type / Coil Type	R410A / Aluminum Fin-Copper Tube			

POWER SUPPLY	115V / 1Ph / 60Hz		208-230V / 1Ph / 60Hz	
Current Cooling	amps 8.4	3.2	4.4	5.6
Rated Current Heating (Heat Pump)	amps 7.6	2.9	4	5.4
Rated Current Heating (Electric Backup)	amps 1.25	4	4	4
Power Cord Length	in 96	72	72	72
Plug Configuration NEMA Number	NEMA6-20P			

LIMITED WARRANTY - ALL SYSTEM TYPES

5 Years Parts, 7 Years Compressor - Residential & Commercial



Select Dealer Program

Partner with success...

HOW TO BECOME A GREE SELECT DEALER

- ✓ Meet all local & state contractor licensing requirements
- ✓ Complete at least one 4-hour training class in person or online with the first year of signup
- ✓ Perform an additional 4 hours of certified training per year (in person or online)
- ✓ Provide updated contact information to receive qualified leads through our Dealer Locator
- ✓ Be courteous, responsive and professional to all potential and existing GREE customers



ADVANTAGES START HERE...

- Partner with one of the **fastest-growing brands** in the duct-free market with a **great product-price-service**
- Generate qualified leads through our **Dealer Locator** and offer the most **attractive warranty terms** to your customers
- **Build Points** with every sale to redeem in digital gift cards
- Receive a fully loaded **GREE Gear Starter Kit** to enhance your GREE presence and sell fast
- Get a step ahead with **special trainings & promotions**



SELECT DEALER WARRANTY PROGRAM*

- 10-year Parts replacement, shipped same day
- 10-year Compressor replacement, shipped same day

* Product sales must be registered within 60 days of installation to qualify. Only applies to residential applications, with certain restrictions. Visit greecomfort.com/warranty for details.

10 year Parts & Compressor warranty is only offered when registering a complete new system except for FLEXX outdoor units can be registered as outdoor unit only.

VISIT GREECOMFORT.COM/GREESELECT FOR DETAILS

WHEN YOU BUY A GREE...

WARRANTY



GREE SELECT DEALER WARRANTY

- **10 Years on all Parts** and **10 Years on the Compressor** to the original registered end user/homeowner when installed for residential use.
- Unit must be purchased and installed by a certified GREE Select Dealer.
- The installation must be registered on greecomfort.com/register within 60 days of installation.



STANDARD WARRANTY

- **5 Years on all Parts** and **7 Years on the Compressor** to the original registered end user/homeowner when installed for residential use. Registration of installation is strongly recommended.



COMMERCIAL WARRANTY

- **5 Year on all Parts** and **7 Years on the Compressor** when installed in commercial applications.



CONTROLS WARRANTY

- **1 Year** on GREE branded controls from purchase date.

Visit greecomfort.com/warranty for more details.

CERTIFICATIONS

GREE systems are among the most environmentally-friendly and energy efficient in the market today.



DISCLAIMERS

- Always use a licensed contractor to install this product to avoid potential hazards such as electrical shock, refrigerant leakage, fire or explosion.
- Only use GREE-sourced parts and accessories with a GREE system.
- Review all safety, installation and operating instructions prior to installing your GREE system for optimal performance.
- GREE reserves the right to modify product design, specifications and informational data in this catalog without notice or obligation.
- The data and information provided here are general in nature and may vary due to your actual installation conditions. Please refer to submittals and product installation documents for more detailed information.

BEFORE YOU INSTALL A GREE...

TOOLS REQUIRED

- R410a flaring tool
- Clamp-on amp meter
- Wrenches (std / adj / torque)
- Vacuum pump
- Refrigerant scale
- Micron gauge
- Manifold & gauges
- Drill & drill bits
- Hole saw
- Pipe cutter
- Level
- Screwdrivers
- Safety goggles & gloves

BEST PRACTICES

UNIT PLACEMENT

- Follow clearance guidelines on indoor & outdoor units for airflow & servicing
- Include space for condensate drainage
- Anchor units properly to prevent vibration or malfunction
- Pitch condensate drain tubing downward for proper drainage

WIRING

- Use only 14/4 STRANDED wire - Never use wire nuts or splices
- L1 & L2 are polarity sensitive
- Use spade connectors on all terminal connections
- Use only a dedicated electrical circuit
- Always GROUND indoor & outdoor unit
- Surge protector HIGHLY recommended

PIPING

- Use only correct line set size as determined by indoor unit
- Use only copper refrigerant piping
- Insulate both refrigerant lines from each other
- For flare connections, use a 45° flaring tool
- All pipe length must be within the maximum and minimum allowance
- Prevent loops, sagging or bending in the piping
- For the FLEXX series, only the gas line requires insulation

CHARGING

- Test refrigerant lines for leaks by pressurizing with nitrogen to 450 P.S.I.
- While under pressure, use a leak detection solution to check all flare connections
- Use only approved evacuation hose & vacuum pump oil for proper evacuation and leak testing: Evacuate to less than 500 microns and hold for 30 minutes
- If refrigerant is added, use electronic scale and weigh in precise amount
- Open service valves prior to energizing unit

INSTALL SUPPORT

greetraining.com
greecomfort.com/resources



SCAN FOR INSTALLATION TIPS

WARRANTY

ONLY VALID IF SYSTEM IS INSTALLED BY A LICENSED CONTRACTOR.

Installation must comply with applicable local & national codes.



G R E E C O M F O R T . C O M

Specifications are subject to change without notice. Manufacturer reserves the right to discontinue or change at any time, specifications or designs without notice or without incurring obligations. 2022 All rights reserved.