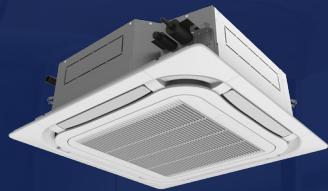




CLIMATE CONTROL WITH EFFICIENCY & AESTHETIC APPEAL



360° CASSETTE

- UP TO 24.5 SEER2 / 15.5 EER2 / 9.5 HSPF2 EFFICIENCY
- COOLING RANGE: -20°F - 122°F
- HEATING RANGE: -22°F - 86°F
- MAXIMUM LINE LENGTH: 131 FT.

MAINTAIN COMFORT WITH AN UNOBTRUSIVE, FLEXIBLE OPTION

GREE's ceiling cassette inconspicuously provides quiet performance through its innovative, 360° design. The ceiling cassette is suitable for any room and can be easily installed in a suspended ceiling with only a discreet decorative discharge grille.

- 4-Way discharge air
- Multiple fan speeds
- Swing louver control
- Automatic voltage adaption
- Internal condensate drain pump
- Sentry float switch
- Refrigerant sensor
- Anti-corrosion Fins

SYSTEM TYPE		HEAT PUMP																	
Indoor Model		CAS09HP230VIR32AH			CAS12HP230VIR32AH			CAS18HP230VIR32AH			CAS24HP230VIR32AH			CAS30HP230VIR32AH	CAS36HP230VIR32AH				
Outdoor Model		VIR09HP230VIR32AO	ENV09HP230VIR32AO	SAP09HP230VIR32AO	VIR12HP230VIR32AO	ENV12HP230VIR32AO	SAP12HP230VIR32AO	VIR18HP230VIR32AO	ENV18HP230VIR32AO	SAP18HP230VIR32AO	VIR24HP230VIR32AO	ENV24HP230VIR32AO	SAP24HP230VIR32AO	LIV30HP230VIR32AO	LIV36HP230VIR32AO				
SYSTEM PERFORMANCE																			
Cooling Capacity	Min - Max	Btu/h	900 - 14,100	900 - 14,100	900 - 14,100	900 - 14,100	900 - 14,100	900 - 14,100	5,100 - 23,200	5,100 - 23,200	5,100 - 23,200	3,600 - 26,500	3,600 - 26,500	3,600 - 26,500	16,878 - 34,980	20,458 - 42,400			
	Capacity @95°F	Btu/h	9,100	9,100	9,100	12,000	12,000	12,000	18,000	18,000	18,000	22,000	22,000	22,000	30,000	33,600			
Heating Capacity	Min - Max	Btu/h	900 - 15,500	900 - 15,500	900 - 15,500	900 - 15,500	900 - 15,500	900 - 15,500	5,800 - 23,500	5,800 - 23,500	5,800 - 23,500	4,000 - 33,000	4,000 - 33,000	4,000 - 33,000	16,790 - 38,998	18,299 - 42,503			
	Capacity @47°F	Btu/h	10,500	10,500	10,500	12,000	12,000	12,000	18,000	18,000	18,000	24,000	24,000	24,000	30,000	34,000			
	Capacity @17°F	Btu/h	6,900	6,900	6,600	7,500	7,500	7,500	12,500	12,500	12,500	15,600	15,600	15,600	18,600	22,000			
	Capacity Max @5°F	Btu/h	7,600	7,600	8,500	10,000	7,600	10,000	12,600	7,600	13,500	16,800	7,600	17,000	21,000	23,400			
SEER2			24.0	24.0	24.5	23.0	23.0	23.0	21.0	21.0	23.0	22.5	22.5	23.0	22.50	21.0			
EER2			15.0	15.0	15.5	13.0	13.0	13.0	10.9	10.9	10.75	11.6	11.6	12.5	11.25	11.95			
HSPF2			9.2	9.2	9.5	9.0	9.0	9.0	9.0	9.0	9.2	9.0	9.0	9.0	8.5	8.5			
COP @5°F			1.94	1.94	1.84	1.90	1.90	1.90	1.80	1.80	1.80	1.80	1.80	1.80	1.80	1.90			
Cooling Temperature Range	°F	-20 - 122				-20 - 122				-20 - 122				-20 - 122				0 - 118	
Heating Temperature Range	°F	-22 - 86				-22 - 86				-22 - 86				-22 - 86				-13 - 75	
Refrigerant Type		R32				R32				R32				R32					
INDOOR UNIT		CAS09HP230VIR32AH			CAS12HP230VIR32AH			CAS18HP230VIR32AH			CAS24HP230VIR32AH			CAS30HP230VIR32AH	CAS36HP230VIR32AH				
Air flow (Min-Max)	CFM	206 - 330			206 - 330			206 - 383			440 - 560			647 - 1000	665 - 1071				
Sound Pressure Level (Min - Max)	dB(A)	29 - 40			29 - 40			30 - 44			39 - 45			38 - 51	38 - 52				
Dehumidification	pt/hr	2.96			2.96			3.80			5.28			7.40	7.82				
External Dimensions (L x D x H)	in	22-7/16 x 22-7/16 x 10-7/16			22-7/16 x 22-7/16 x 10-7/16			22-7/16 x 22-7/16 x 10-7/16			33-5/64 x 33-5/64 x 9-29/64			33-5/64 x 33-5/64 x 9-29/64	33-5/64 x 33-5/64 x 9-29/64				
Package Dimension (L x W x H)	in	27-31/64 x 25-45/64 x 11-39/64			27-31/64 x 25-45/64 x 11-39/64			27-31/64 x 25-45/64 x 11-39/64			37-29/32 x 37-29/32 x 12-51/64			36-47/64 x 35-35/64 x 10-45/64	36-47/64 x 35-35/64 x 10-45/64				
Net Weight	lbs	37.5			37.5			37.5			63.9			49.6	50.7				
Gross Weight	lbs	48.5			48.5			48.5			83.8			62.8	63.9				
CASSETTE GRILLE (REQUIRED)		GREETF05			GREETF05			GREETF05			GREETF06			GREETF06					
Grille Dimension (L x D x H)	in	24-13/32 x 24-13/32 x 1-7/8			24-13/32 x 24-13/32 x 1-7/8			24-13/32 x 24-13/32 x 1-7/8			37-13/32 x 37-13/32 x 2-3/64			37-13/32 x 37-13/32 x 2-3/64					
Package Dimension (L x W x H)	in	27-19/32 x 27-19/32 x 4-59/64			27-19/32 x 27-19/32 x 4-59/64			27-19/32 x 27-19/32 x 4-59/64			40-43/64 x 40-55/64 x 4-13/32			40-43/64 x 40-55/64 x 4-13/32					
Weight (Net / Gross)	lbs	6.6 / 9.9			6.6 / 9.9			6.6 / 9.9			13.23 / 20.948			13.23 / 20.948					
OUTDOOR UNIT		VIR09HP230VIR32AO	ENV09HP230VIR32AO	SAP09HP230VIR32AO	VIR12HP230VIR32AO	ENV12HP230VIR32AO	SAP12HP230VIR32AO	VIR18HP230VIR32AO	ENV18HP230VIR32AO	SAP18HP230VIR32AO	VIR24HP230VIR32AO	ENV24HP230VIR32AO	SAP24HP230VIR32AO	LIV30HP230VIR32AO	LIV36HP230VIR32AO				
Sound Pressure Level	dB(A)	52	52	56	52	52	55	59	59	59	58	61	62	62					
External Dimensions (L x D x H)	in	31-37/64 x 13-25/32 x 21-27/32	31 37/64 x 13 25/32 x 21 27/32	34-3/8 x 14-51/64 x 21-27/32	31-37/64 x 13-25/32 x 21-27/32	31 37/64 x 13 25/32 x 21 27/32	34-3/8 x 14-51/64 x 21-27/32	37-23/32 x 15-53/64 x 25-63/64	37-23/32 x 15-53/64 x 25-63/64	37-23/32 x 15-53/64 x 25-63/64	37-23/32 x 15-53/64 x 25-63/64	39-3/8 x 16-13/16 x 29-3/8	39-3/8 x 16-13/16 x 29-3/8	39-3/8 x 15-13/16 x 29-3/8					
Package Dimension (L x W x H)	in	34-21/64 x 15-43/64 x 24-13/32	34 21/64 x 15 43/64 x 24 13/32	37-7/16 x 16-31/32 x 24-13/32	34-21/64 x 15-43/64 x 24-13/32	34 21/64 x 15 43/64 x 24 13/32	37-7/16 x 16-31/32 x 24-13/32	40-5/8 x 17-61/64 x 29-1/64	40-5/8 x 17-61/64 x 29-1/64	40-5/8 x 17-61/64 x 29-1/64	40-5/8 x 17-61/64 x 29-1/64	42-33/64 x 19-1/64 x 31-57/64	42-33/64 x 19-1/64 x 31-57/64	42-33/64 x 19-1/64 x 31-57/64					
Net Weight	lbs	70.6	70.6	78.3	67.3	70.6	78.3	94.8	94.8	94.8	92.6	103.6	115.8	116.8	122.4				
Gross Weight	lbs	76.1	76.1	84.9	72.8	76.1	84.9	104.7	104.7	104.7	102.5	114.7	126.8	127.9	133.4				
REFRIGERANT PIPING																			
Refrigerant Charge - R410A	oz	30	30	35.3	28.2	28.2	47.6	40.6	40.6	47.6	42.3	49.4	56.4	56.4					
Additional Charge	oz/ft	0.2	0.2	0.2	0.2	0.2	0.4	0.2	0.2	0.4	0.4	0.4	0.4	0.4					
Line Set Sized by Indoor Unit (Liquid - Gas)	in	1/4 - 3/8			1/4 - 3/8			1/4 - 1/2			1/4 - 5/8			1/4 - 5/8					
Line Set Size (Liquid - Gas) - Flared Connections	in	1/4 - 3/8	1/4 - 3/8	1/4 - 1/2	1/4 - 1/2	1/4 - 1/2	1/4 - 1/2	1/4 - 1/2	1/4 - 1/2	1/4 - 5/8	1/4 - 5/8	1/4 - 5/8	1/4 - 5/8	1/4 - 5/8					
Pre-Charge Length	ft	25			25			25			25			25					
Pipe Length (Min - Max)	ft	10 - 66	10 - 66	10 - 131	10 - 66	10 - 66	10 - 131	10 - 131	10 - 131	10 - 131	10 - 131	10 - 131	10 - 131	10 - 131					
Max. Pipe Elevation	ft	40	40	82	40	40	82	82	82	82	82	82	82	82					
ELECTRICAL																			
Power Supply		208-230V / 1Ph / 60Hz (Powered by the Outdoor Unit)			208-230V / 1Ph / 60Hz (Powered by the Outdoor Unit)			208-230V / 1Ph / 60Hz (Powered by the Outdoor Unit)			208-230V / 1Ph / 60Hz (Powered by the Outdoor Unit)			208-230V / 1Ph / 60Hz (Powered by the Outdoor Unit)					
Voltage Range (Min - Max)	VAC	187 - 253			187 - 253			187 - 253			187 - 253			187 - 253					
Rated Current - Cooling	A	4.73	4.73	5.9	6.64	6.64	5.9	11.5	5.9	12.5	13	5.9	14	20	20				
Rated Current - Heating	A	6	6	7.6	6.41	6.41	7.8	11.5	7.8	16	15.5	7.8	21.5	20	20				
MCA	A	10	10	11	10	10	11	16	11	20	22	11	25	25.6	23				
MOCP	A	15	15	15	15	15	15	20	15	25	30	15	40	35	35				
Suggested Breaker Size	A	10	10	15	10	10	15	20	15	20	25	15	25	30	25				
Main Power Wire Size	AWG	Per Local Code			Per Local Code			Per Local Code			Per Local Code			Per Local Code					
Interconnecting Wire Size	AWG	14 / 4			14 / 4			14 / 4			14 / 4			14 / 4					
LIMITED WARRANTY		5 Years Parts, 7 Years Compressor - Residential & Commercial							5 Years Parts, 7 Years Compressor - Residential & Commercial										



Air comfort for all

GREECOMFORT.COM