




SUBMITTAL DATA

ENV12HP230V1R32AH for Use with Multi R32
12000 BTU/H Wall Mounted Unit

| | | |
|------------------|--------------|------|
| Job Name | Location | Date |
| Purchaser | Engineer | |
| Submmited to | For | |
| Unit Designation | Schedule No. | |

| | | |
|--|--|--|
|  <p>YBE1FBB</p> |  <p>ENV12HP230V1R32AH</p> |  <p>XE71 (Optional)</p> |
|--|--|--|

GENERAL FEATURES

- Compact and Quiet Design
- Auto-Clean Function on Indoor Unit
- Swing Louver Control
- Self-diagnosis
- New R32 Refrigerant
- Wi-Fi Included (Factory Installed)
- Wireless Remote with LCD Display
- Wired Controller Options
- Low Ambient Cooling Based on Outdoor Unit Performance
- Low Ambient Heating Based on Outdoor Unit Performance
- Coil (Indoor) Copper Tube / Aluminum Fin
- Blue Colored Fin - 500 Hrs Salt Spray Tested
- Fresh Air Kit - TL204000100 is offered as an accessory, needs to be ordered separately.

SPECIFICATIONS, FEATURES & FUNCTION SUMMARY

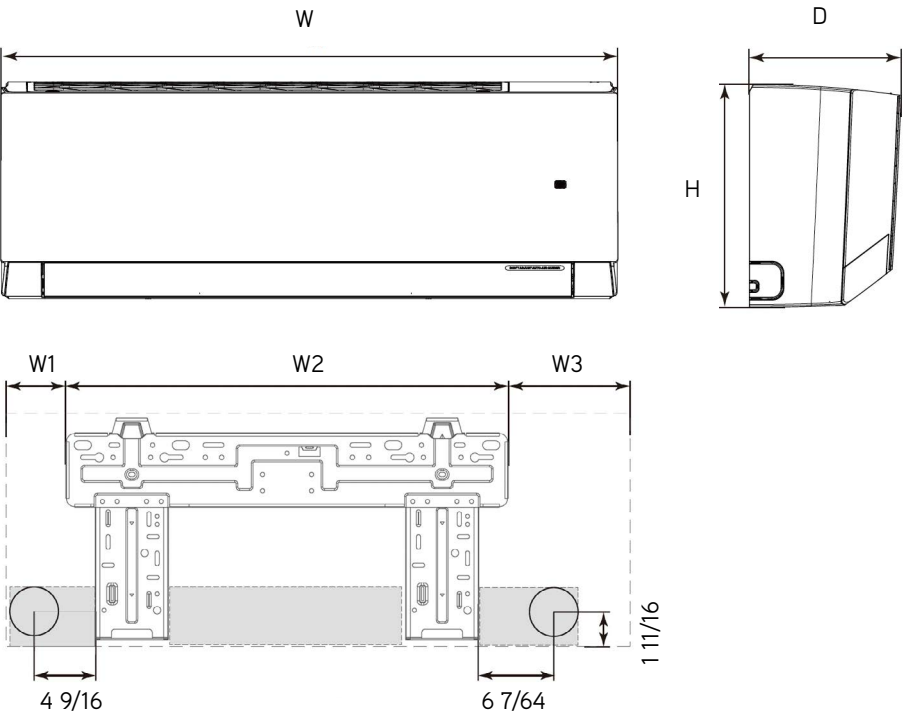
| SYSTEM TYPE | | | HEAT PUMP | | FEATURES & FUNCTIONS SUMMARY | |
|---|----------------------|-------|--|--|---|-----------|
| Indoor Model | | | ENV12HP230V1R32AH | | Wired Controller Interface | Yes |
| SYSTEM PERFORMANCE | | | | | WiFi Included | Yes |
| Cooling Capacity | Nominal | Btu/h | 12,000 | | NEW! Easy Service Access | Yes |
| | Rated Capacity @95°F | Btu/h | | | Indoor Fan Type | Crossflow |
| Heating Capacity | Nominal | Btu/h | 12,000 | | Multi Fan Speeds | 7 Speeds |
| | Rated Capacity @47°F | Btu/h | | | Indoor Unit Display | Yes |
| | Rated Capacity @17°F | Btu/h | | | Auxiliary Electrical Heater | No |
| | Rated Capacity @5°F | Btu/h | | | Ventilation (Outdoor Air) | Yes |
| SEER2 | | | System Performance Based on the Connected Outdoor Unit Performance | | REMOTE CONTROLLER FUNCTIONS | |
| EER2 | | | | | Humidity Control | Yes |
| HSPF2 | | | | | Two-way Ventilation | Yes |
| COP @5°F | | | | | Auto Clean | Yes |
| Cooling Temperature Range | | °F | | | Auto Mode | Yes |
| Heating Temperature Range | | °F | Auto Fan | | Yes | |
| Refrigerant Type | | | R32 | | Auto Swing (Horizontal Auto Swing) | Yes |
| INDOOR UNIT | | | ENV12HP230V1R32AH | | Auto Swing - 180° (Vertical Auto Swing) | Yes |
| Air flow (Min - Max) | | CFM | 212 - 400 | | Clock | Yes |
| Sound Pressure Level (Min - Max) | | dB(A) | 20 - 43 | | Dry Mode | Yes |
| Dehumidification | | pt/hr | 2.96 | | Dry Anti-Mildew (X-Fan) Mode | Yes |
| External Dimensions (W x H x D) | | in | 32 61/64 × 11 17/32 × 7 7/8 | | Energy Saving Mode | Yes |
| Package Dimension (W x H x D) | | in | 35 18/64 × 14 44/64 × 10 45/64 | | Dirty Filter Alert | Yes |
| Net Weight | | lbs | 20.9 | | Fan Speed Control (7 Speeds) | Yes |
| Gross Weight | | lbs | 25.4 | | I Feel Function | Yes |
| REFRIGERANT PIPING | | | | | Child Lock | Yes |
| Line Set Sized by the Indoor Unit (Liquid - Gas) - Flared Connections | | in | 1/4 - 1/2 | | Quiet Mode | Yes |
| ELECTRICAL | | | | | Room Temperature Display | Yes |
| Power Supply | | | 208-230V / 1Ph / 60Hz (Powered by the Outdoor Unit) | | Sleep Mode | Yes |
| | | | | | Turbo Mode | Yes |
| | | | | | 3 Sleep Mode Options | Yes |
| | | | | | Timer Mode | Yes |
| | | | | | Turbo Mode | Yes |
| | | | | | Display On/Off Control | Yes |
| | | | | | Freeze Guard Mode | Yes |
| | | | | | Power Failure Mode | Yes |

DIMENSIONS & CLEARANCES

INDOOR UNIT

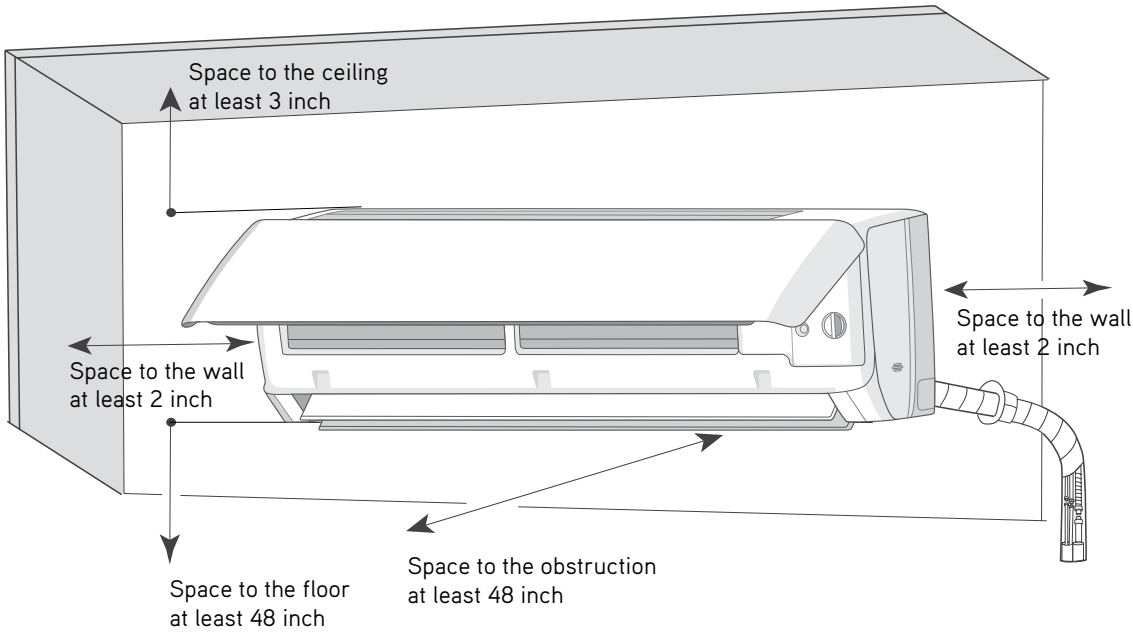
Unit: inch

| ENV12HP230V1R32AH | |
|-------------------|----------|
| DIMENSIONS | |
| W | 32 61/64 |
| H | 11 17/32 |
| D | 7 7/8 |
| W1 | 4 11/16 |
| W2 | 21 11/32 |
| W3 | 6 59/64 |



INDOOR UNIT

Minimum clearance



Specifications are subject to change without notice. Manufacturer reserves the right to discontinue or modify specifications or designs without notice or without incurring obligations. All Rights reserved.