




## SUBMITTAL DATA

ENV18HP230V1R32AH for Use with Multi R32  
18000 BTU/H Wall Mounted Unit

Job Name	Location	Date
Purchaser	Engineer	
Submmited to	For	
Unit Designation	Schedule No.	

 <p>YBE1FBB</p>	 <p>ENV18HP230V1R32AH</p>	 <p>XE71 (Optional)</p>
--	--	--

## GENERAL FEATURES

- Compact and Quiet Design
- Auto-Clean Function on Indoor Unit
- Swing Louver Control
- Self-diagnosis
- New R32 Refrigerant
- Wi-Fi Included (Factory Installed)
- Wireless Remote with LCD Display
- Wired Controller Options
- Low Ambient Cooling Based on Outdoor Unit Performance
- Low Ambient Heating Based on Outdoor Unit Performance
- Coil (Indoor) Copper Tube / Aluminum Fin
- Blue Colored Fin - 500 Hrs Salt Spray Tested
- Fresh Air Kit - TL204000100 is offered as an accessory, needs to be ordered separately.

## SPECIFICATIONS, FEATURES & FUNCTION SUMMARY

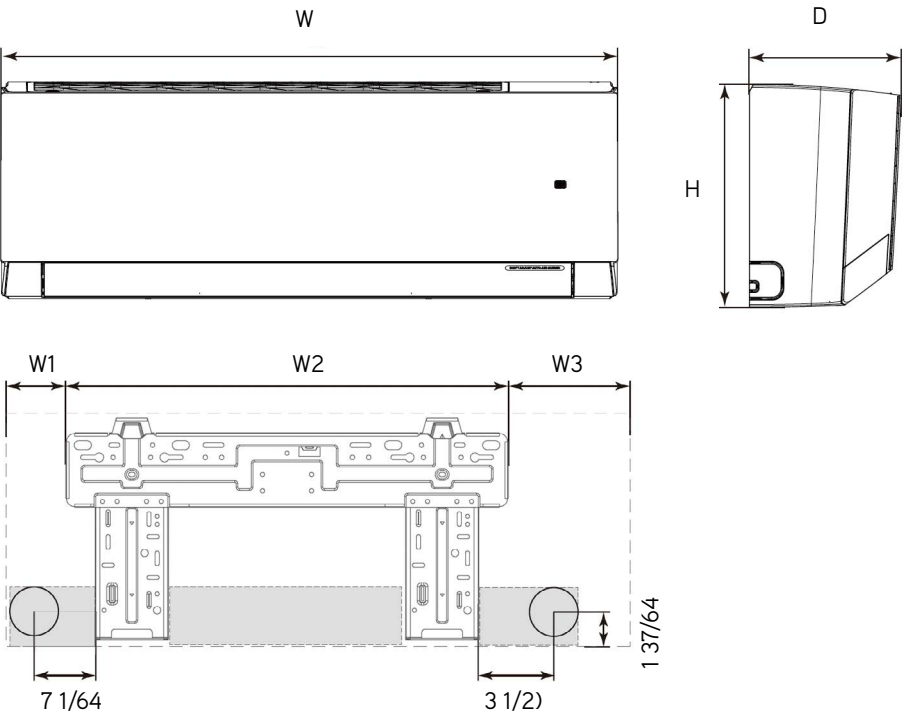
SYSTEM TYPE			HEAT PUMP	FEATURES & FUNCTIONS SUMMARY	
Indoor Model			ENV18HP230V1R32AH	Wired Controller Interface	Yes
SYSTEM PERFORMANCE				WiFi Included	Yes
Cooling Capacity	Nominal	Btu/h	18,000	NEW! Easy Service Access	Yes
	Rated Capacity @95°F	Btu/h		Indoor Fan Type	Crossflow
Heating Capacity	Nominal	Btu/h	18,000	Multi Fan Speeds	7 Speeds
	Rated Capacity @47°F	Btu/h		Indoor Unit Display	Yes
	Rated Capacity @17°F	Btu/h		Auxiliary Electrical Heater	No
	Rated Capacity @5°F	Btu/h		Ventilation (Outdoor Air)	Yes
SEER2			System Performance Based on the Connected Outdoor Unit Performance	REMOTE CONTROLLER FUNCTIONS	
EER2				Humidity Control	Yes
HSPF2				Two-way Ventilation	Yes
COP @5°F				Auto Clean	Yes
Cooling Temperature Range		°F		Auto Mode	Yes
Heating Temperature Range		°F		Auto Fan	Yes
Refrigerant Type			R32	Auto Swing (Horizontal Auto Swing)	Yes
INDOOR UNIT			ENV18HP230V1R32AH	Auto Swing - 180° (Vertical Auto Swing)	Yes
Air flow (Min - Max)		CFM	324 - 589	Clock	Yes
Sound Pressure Level (Min - Max)		dB(A)	29 - 48	Dry Mode	Yes
Dehumidification		pt/hr	3.80	Dry Anti-Mildew (X-Fan) Mode	Yes
External Dimensions (W x H x D)		in	39 3/32 × 12 1/4 × 8 47/64	Energy Saving Mode	Yes
Package Dimension (W x H x D)		in	41 17/32 × 15 5/32 × 11 47/64	Dirty Filter Alert	Yes
Net Weight		lbs	29.8	Fan Speed Control (7 Speeds)	Yes
Gross Weight		lbs	35.3	I Feel Function	Yes
REFRIGERANT PIPING				Child Lock	Yes
Line Set Sized by the Indoor Unit (Liquid - Gas) - Flared Connections		in	1/4 - 1/2	Quiet Mode	Yes
ELECTRICAL				Room Temperature Display	Yes
Power Supply			208-230V / 1Ph / 60Hz (Powered by the Outdoor Unit)	Sleep Mode	Yes
				Turbo Mode	Yes
				3 Sleep Mode Options	Yes
				Timer Mode	Yes
				Turbo Mode	Yes
				Display On/Off Control	Yes
				Freeze Guard Mode	Yes
				Power Failure Mode	Yes

DIMENSIONS & CLEARANCES

INDOOR UNIT

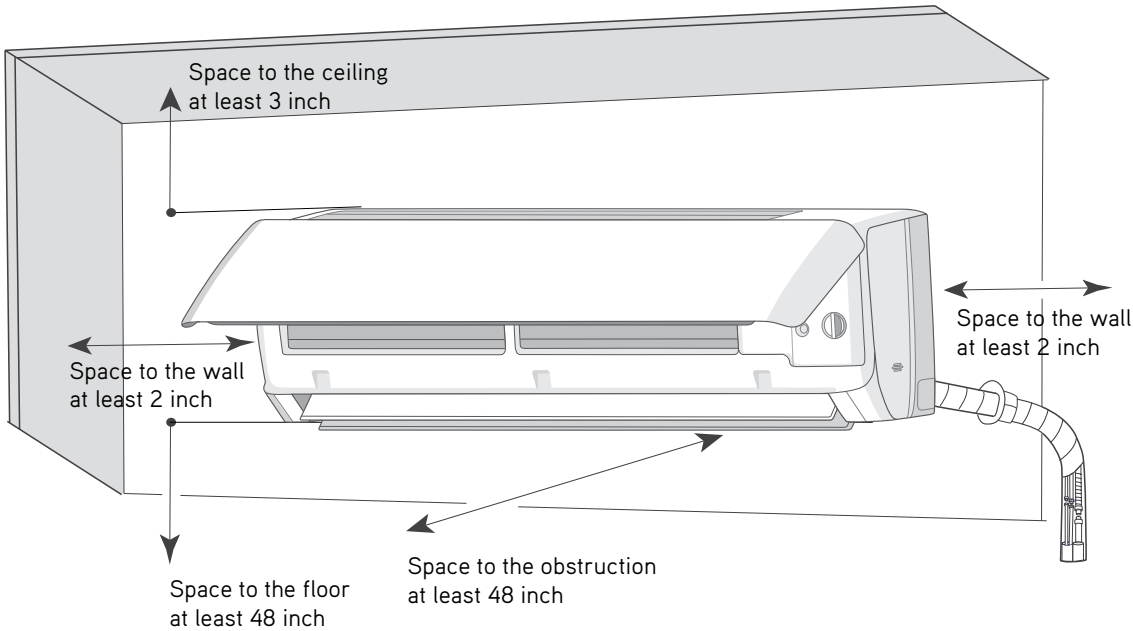
Unit: inch

ENV18HP230V1R32AH	
DIMENSIONS	
W	39 3/32
H	12 1/4
D	8 47/64
W1	5 3/64
W2	27 55/64
W3	6 13/64



INDOOR UNIT

Minimum clearance



Specifications are subject to change without notice. Manufacturer reserves the right to discontinue or modify specifications or designs without notice or without incurring obligations. All Rights reserved.